

EXISTING CONDITION & REMOVALS NOTES

- EXISTING EDGE LIGHT CABLING IS SHOWN DISTORTED TO IMPROVE CLARITY.
- REMOVAL OF SPLICE CANS WHICH ARE PART OF SIGN BASES SHALL BE INCIDENTAL TO SIGN BASE REMOVAL.

THE LOCATION OF UNDERGROUND UTILITIES AS INDICATED ON THE PLANS HAS BEEN OBTAINED FROM EXISTING RECORDS. NEITHER THE OWNER, THE DIVISION, NOR THE PROJECT ENGINEER ASSUMES ANY RESPONSIBILITY WHATEVER IN RESPECT TO THE ACCURACY, COMPLETENESS, OR SUFFICIENCY OF THE INFORMATION. THERE IS NO GUARANTEE, EITHER EXPRESSED OR IMPLIED, THAT THE LOCATIONS, SIZE, AND TYPE OF MATERIAL OF EXISTING UNDERGROUND UTILITIES INDICATED ARE REPRESENTATIVE OF THOSE TO BE ENCOUNTERED IN THE CONSTRUCTION.

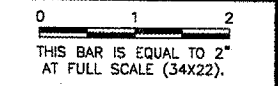
IT SHALL BE THE CONTRACTORS RESPONSIBILITY TO DETERMINE THE ACTUAL LOCATION OF ALL SUCH FACILITIES, INCLUDING SERVICE CONNECTIONS TO UNDERGROUND UTILITIES. PRIOR TO CONSTRUCTION, THE CONTRACTOR SHALL NOTIFY THE UTILITY COMPANY OF HIS OPERATIONAL PLANS. THE CONTRACTOR SHALL MAKE ARRANGEMENTS FOR DETAILED INFORMATION AND ASSISTANCE IN LOCATING UTILITIES. IN THE EVENT AN UNEXPECTED UTILITY INTERFERENCE IS ENCOUNTERED DURING CONSTRUCTION, THE CONTRACTOR SHALL IMMEDIATELY NOTIFY THE UTILITY COMPANY, THE OWNER, AND THE RESIDENT ENGINEER. ANY SUCH MAINS AND/OR SERVICES DISTURBED BY THE CONTRACTOR'S OPERATIONS SHALL BE RESTORED IMMEDIATELY AT HIS EXPENSE TO THE SATISFACTION OF THE OWNER AND THE ENGINEER.

LEGEND

- EXISTING PAVEMENT
- NEW PAVEMENT
- FUTURE PAVEMENT
- E ——— EXIST. ELECTRICAL CABLE
- G ——— EXIST. GAS LINE
- · · · · · EXIST. DITCH/FLOWLINE
- FO ——— EXIST. FIBER—OPTIC CABLE
- SS ——— EXIST. STORM SEWER
- UD ——— EXIST. UNDERDRAIN
- W ——— EXIST. WATERMAIN
- X ——— EXIST. FENCE
- · · · · · EXIST. JOINT
- · · · · · EXIST. RWY 13/31 CIRCUIT
- · · · · · EXISTING TXY B — NORTH CIRCUIT (CKT. #6)
- /// /// NEW REMOVAL
- RR NEW RELOCATION
- A NEW ADJUSTMENT
- ⊠ EXIST. BASE MOUNTED TAXIWAY LIGHT
- EXIST. STAKE MOUNTED TXY LIGHT
- RWY ⊙ EXIST. FLUSH MOUNTED RUNWAY LIGHT
- TXY ⊙ EXIST. FLUSH MOUNTED TAXIWAY LIGHT
- ⊠ EXIST. BASE MOUNTED RUNWAY LIGHT
- ⊠ EXIST. STAKE MOUNTED RUNWAY LIGHT
- ⊠ EXIST. MALSR THRESHOLD LIGHT
- ⊠ EXIST. THRESHOLD LIGHT
- ⊠ EXIST. AIRFIELD SIGN
- FOS □ EXIST. FIBER—OPTIC SPLICE, DIRECT BURY
- ⊙ EXIST. SPLICE CAN
- ⊙ EXIST. OVERHEAD LIGHT
- ⊠ HH EXIST. HANDHOLE
- DM EXIST. DUCT MARKER
- ⊙ CS EXIST. COLLECTION STRUCTURE
- ⊙ EXIST. CLEANOUT
- EXIST. INLET
- ⊙ EXIST. MANHOLE
- ▽ EXIST. REIL
- ⊠ EXIST. WINDSOCK
- ◆ EXIST. SOIL BORING
- ⊠ EXIST. SIGN
- /// /// EXIST. PAVEMENT — TO BE REMOVED
- NEW BUTT JOINT MILLING
- DC DIRECT CONNECTION — UNDERDRAIN TO STORM SEWER
- ☁ NEW CLEARING & GRUBBING LIMITS

REVISIONS

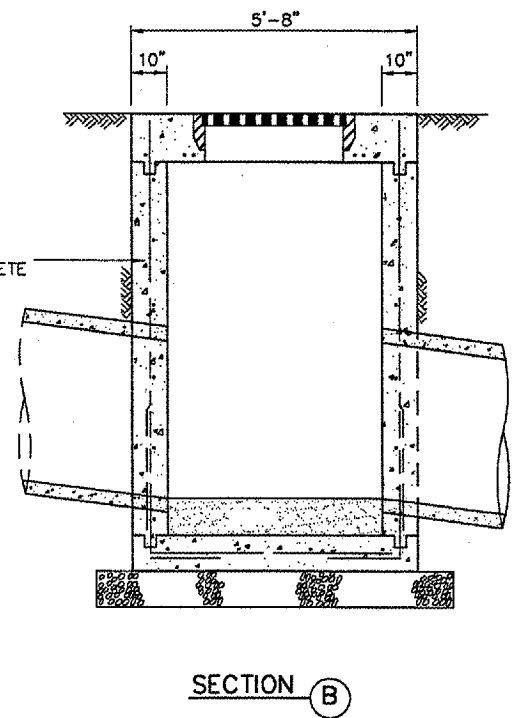
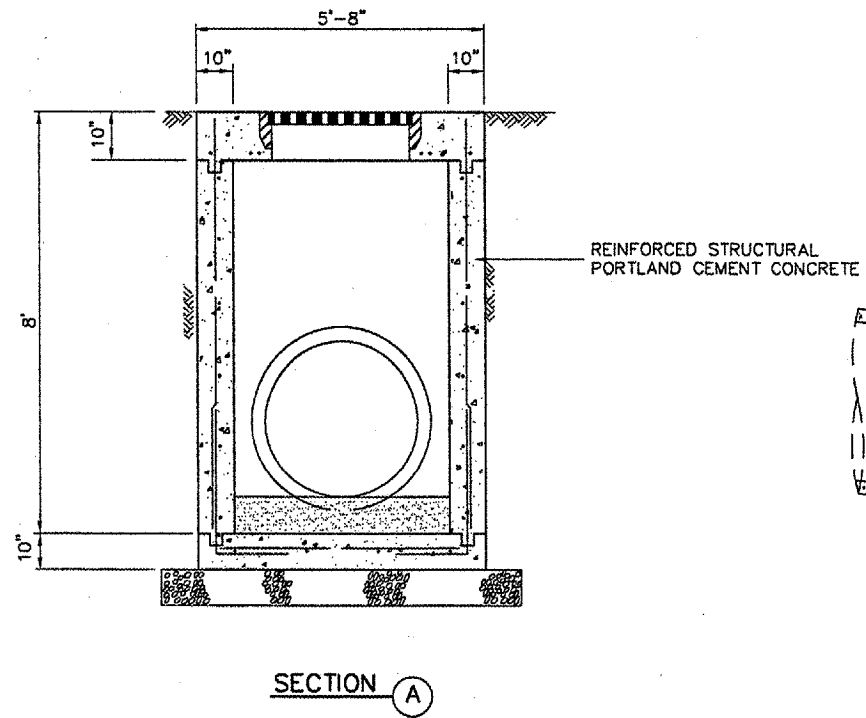
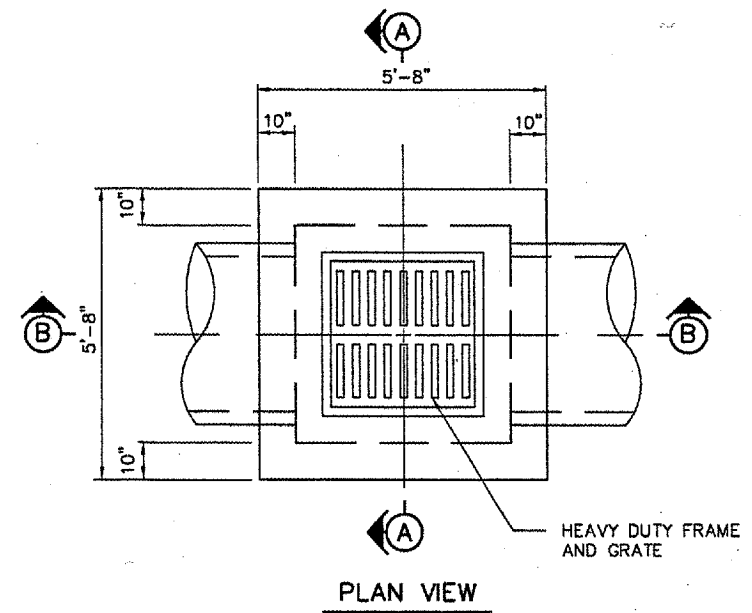
NUMBER	BY	DATE



SPRINGFIELD AIRPORT AUTHORITY
ABRAHAM LINCOLN CAPITAL AIRPORT
SPRINGFIELD, ILLINOIS
CONSTRUCT RUNWAY 13/31 RSA IMPROVEMENTS
EXISTING CONDITIONS & REMOVALS
LEGENDS & NOTES

© Copyright CMT, Inc.
CMT
 CRAWFORD, MURPHY & TILLY, INC.
 CONSULTING ENGINEERS
 License No. 184-000813

DESIGN BY:	RLV
DRAWN BY:	DPA
CHECKED BY:	RLV
APPROVED BY:	RLV
DATE:	04/24/07
JOB No:	05035-03



INLET (TYPE II) REMOVAL DETAILS

N.T.S.

NOTE: DIMENSIONS ARE APPROXIMATE.