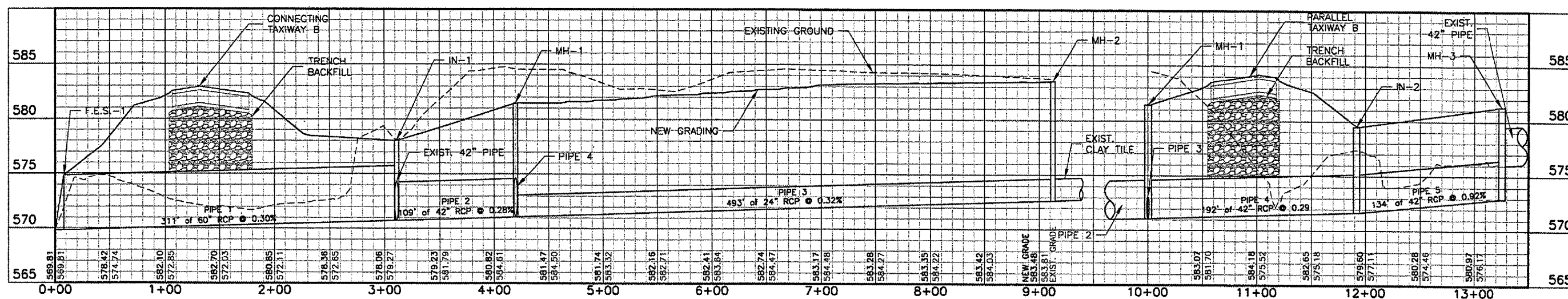


UNDERDRAIN STRUCTURE SCHEDULE									UNDERDRAIN PIPE SCHEDULE							
Structure	Alignment	Station	Offset	Northing	Easting	Rim	Invert	Type	Line	Structure	Structure	Up Inv	Down Inv	Length	Slope	Pipe
CO-1	Con Txy B	0+75.00	28' Lt.	1159703.84	2430810.94	586.54	582.54	3	UD-1	CO-1	CS-1	582.54	578.09	338	1.32%	Perf.
CO-2	Txy B	118+00.00	28' Lt.	1159789.06	2431496.96	584.67	580.67	3	UD-2	CS-2	CS-1	578.79	578.09	140	0.50%	Perf.
CO-3	Txy B	123+00.00	28' Lt.	1159493.54	2431899.32	586.29	582.29	1	UD-3	CO-2	CS-2	580.67	578.79	502	0.37%	Perf.
CO-4	Con Txy B	0+77.66	145' Rt.	1159600.98	2430950.05	586.65	582.65	1	UD-4	CO-3	CO-2	582.29	580.67	499	0.32%	Perf.
CO-5	Txy B	118+00.00	28' Rt.	1159743.93	2431463.81	584.37	580.37	3	UD-5	CO-4	CS-3	582.65	577.82	391	1.24%	Perf.
CO-6	Txy B	122+31.98	48.9' Rt.	1159471.38	2431799.61	585.52	581.52	3	UD-6	CS-1	CS-3	578.09	577.82	76	0.36%	Perf.
CO-7	Con Txy B	122+97.1	250' Rt.	1159270.14	2431733.18	584.75	581.75	1	UD-7	CS-3	IN-1	577.82	574.02	157	2.42%	Non
CS-1	Con Txy B	4+13.00	28' Lt.	1159973.66	2431009.12	582.09	578.09		UD-8	CO-5	CS-3	580.37	577.82	458	0.56%	Perf.
CS-2	Txy B	112+97.00	28' Lt.	1160086.50	2431092.00	582.79	578.79		UD-9	CO-6	CO-5	581.52	580.37	433	0.27%	Perf.
CS-3	Con Txy B	4+13.00	48' Rt.	1159928.67	2431070.37	581.82	577.82		UD-10	CO-7	CO-6	581.75	581.52	226	0.10%	Perf.

STORM SEWER STRUCTURE SCHEDULE									STORM SEWER PIPE SCHEDULE								
Structure	Station	Offset	Northing	Easting	Rim	Invert 1	Invert 2	Invert 3	Invert 4	Pipe	Structure	Structure	Up Inv	Down Inv	Length	Size	Slope
FES-1	111+94.83	162.2' Rt.	1159994.02	2430896.64	569.81	569.81				1	IN-1	FES-1	570.73	569.81	311	60"	0.30%
IN-1	115+03.75	200.2' Rt.	1159780.49	2431123.10	578.02	570.73	570.75	572.93	572.86	2	MH-1	IN-1	571.06	570.75	109	42"	0.28%
MH-1	115+02.41	91.6' Rt.	1159868.86	2431186.34	581.45	571.06	571.08	571.1		3	MH-2	MH-1	572.65	571.08	493	24"	0.32%
MH-2	119+95.00	91.6' Rt.	1159577.27	2431583.35	583.52	572.65	572.65			4	IN-2	MH-1	571.66	571.1	192	42"	0.29%
IN-2	115+00.00	100.0' Lt.	1160024.68	2431297.79	579.5	571.66	571.68			5	MH-3	IN-2	572.91	571.68	134	42"	0.92%
MH-3	116+33.84	100.2' Lt.	1159945.58	2431405.76	581.33	572.91	576.02										



**SPRINGFIELD AIRPORT AUTHORITY
 ABRAHAM LINCOLN CAPITAL AIRPORT
 SPRINGFIELD, ILLINOIS**

**CONSTRUCT RUNWAY 13/31 RSA IMPROVEMENTS
 DRAINAGE PROFILE AND SCHEDULES**

CMT
 CRAWFORD, MURPHY & TILLY, INC.
 CONSULTING ENGINEERS
 License No. 184-006813

DESIGN BY: CBG
 DRAWN BY: DPA
 CHECKED BY: *[Signature]*
 APPROVED BY: *[Signature]*
 DATE: 04/24/07
 JOB No: 05035-03
 IL PROJ. NO. SPI-3488
 AIP PROJ. NO. J-17-0096-42
 SHEET 24 OF 79 SHEETS