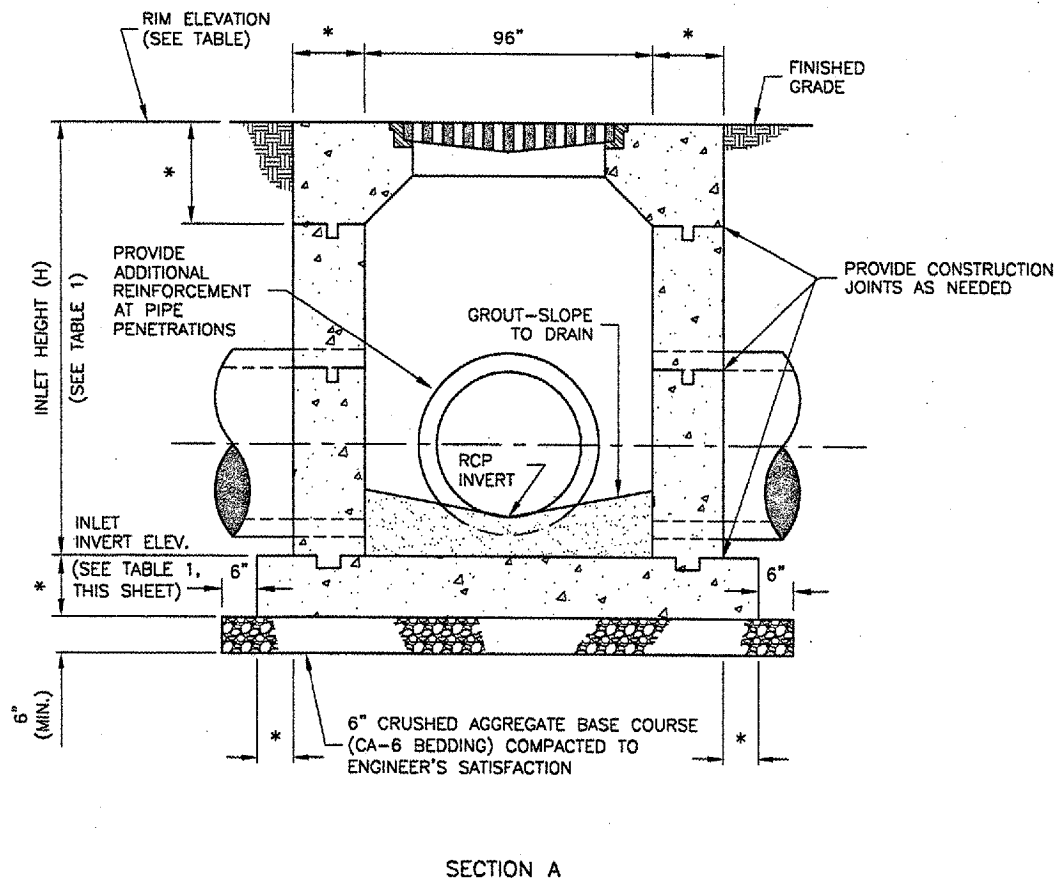
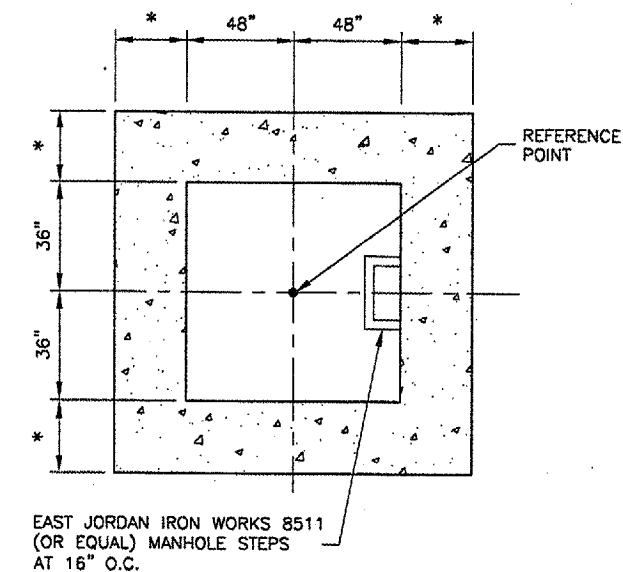


PLAN



SECTION A



WALL PLAN
N.T.S.

INLET DETAILS
N.T.S.

DESIGN CRITERIA

1. THE INLET SHALL BE CONSTRUCTED TO MEET OR EXCEED THE FOLLOWING LOADINGS:
 - A. EARTHLOAD = 2 FT. FILL AT 130 LBS./FT.²
 - B. SURCHARGE = 2 FT. FILL AT 130 LBS./FT.²
 - C. LIVE LOAD = A.A.S.H.T.O. HS-20 TRUCK WITH 20% IMPACT
 - D. $f'_c = 4,500$ P.S.I.
 - E. $f_y = 60,000$ P.S.I.
 - F. ULTIMATE STRENGTH DESIGN METHOD
- THE SUPPLIER SHALL PROVIDE CERTIFICATION THAT THE INLETS MEET OR EXCEED THESE REQUIREMENTS PRIOR TO INSTALLATION.

TABLE 1

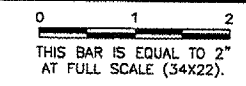
INLET	IN-1	IN-2
STA. OFFSET	115+05.75 200.22' RT.	115+00.00 100.00' RT.
RIM ELEVATION	578.02	579.50
RCP DIA. "A"	60" RCP	42" RCP
RCP DIA. "B"	42" RCP	-
RCP DIA. "C"	42" RCP	42" RCP
RCP DIA. "D"	42" RCP	-
RCP INVERT "A"	570.73	571.64
RCP INVERT "B"	572.86	-
RCP INVERT "C"	570.75	571.65
RCP INVERT "D"	572.93	-
INLET INVERT	570.23	571.26
INLET HEIGHT (H)	7.79	8.24

GENERAL NOTES

1. ALL REINFORCEMENT BARS SHALL CONFORM TO ASTM A615 GRADE 60 AND SHALL BE CLEAN AND FREE OF GREASE, SCALING RUST, AND OTHER FOREIGN MATERIALS.
2. INLET MAY BE CONSTRUCTED BY CAST-IN-PLACE CONCRETE OR PRE-CAST CONCRETE.
3. CAST-IN-PLACE CONCRETE AND PRE-CAST CONCRETE FOR THE INLETS SHALL HAVE A MINIMUM 14 DAYS COMPRESSIVE STRENGTH OF 3500 P.S.I.
4. THE CONTRACTOR SHALL VERIFY THE LOCATION AND SIZE OF PIPE OPENINGS WITH TABLE 1, THIS SHEET.
5. ALL FOOTING EXCAVATIONS SHALL BE CLEAN FREE OF DEBRIS, STANDING WATER AND LOOSE FOIL AND SHALL BE INSPECTED BY THE ENGINEER PRIOR TO THE PLACEMENT OF CONCRETE OR SUBBASE.
6. CONCRETE SHALL NOT BE PLACED OVER FROZEN OR MUDDY SOIL.
7. DIMENSIONS SHOWN ARE MINIMUMS.

REVISIONS

NUMBER	BY	DATE



SPRINGFIELD AIRPORT AUTHORITY
 ABRAHAM LINCOLN CAPITAL AIRPORT
 SPRINGFIELD, ILLINOIS

CONSTRUCT RUNWAY 13/31 RSA IMPROVEMENTS
 INLET - SPECIAL DETAIL

© Copyright CMT, Inc.
CMT
 CRAWFORD, MURPHY & TILLY, INC.
 CONSULTING ENGINEERS
 License No. 984-008513

DESIGN BY: RLV
 DRAWN BY: CMT
 CHECKED BY: RLV
 APPROVED BY: RLV
 DATE: 04/24/07
 JOB No: 05035-03

IL PROJ. NO. SPI-3488
 AIP PROJ. NO. 3-17-0096-42