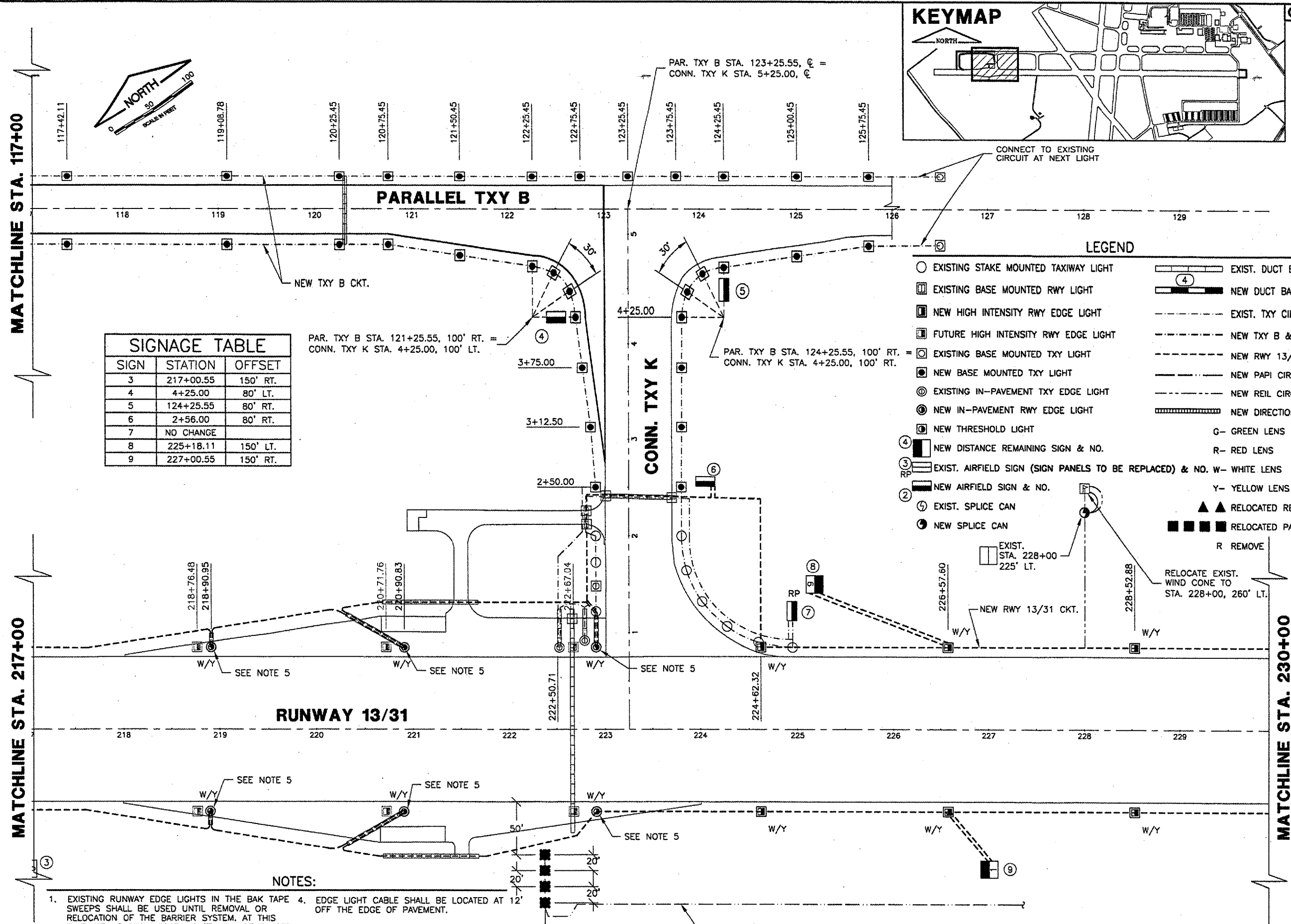
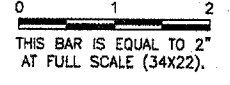


REVISIONS		
NUMBER	BY	DATE



SIGNAGE TABLE		
SIGN	STATION	OFFSET
3	217+00.55	150' RT.
4	4+25.00	80' LT.
5	124+25.55	80' RT.
6	2+56.00	80' RT.
7	NO CHANGE	
8	225+18.11	150' LT.
9	227+00.55	150' RT.

- LEGEND**
- EXISTING STAKE MOUNTED TAXIWAY LIGHT
  - EXISTING BASE MOUNTED RWY LIGHT
  - NEW HIGH INTENSITY RWY EDGE LIGHT
  - FUTURE HIGH INTENSITY RWY EDGE LIGHT
  - EXISTING BASE MOUNTED TXY LIGHT
  - NEW BASE MOUNTED TXY LIGHT
  - ⊙ EXISTING IN-PAVEMENT TXY EDGE LIGHT
  - ⊙ NEW IN-PAVEMENT RWY EDGE LIGHT
  - ⊙ NEW THRESHOLD LIGHT
  - ④ NEW DISTANCE REMAINING SIGN & NO.
  - ③ EXIST. AIRFIELD SIGN (SIGN PANELS TO BE REPLACED) & NO. W- WHITE LENS
  - ② NEW AIRFIELD SIGN & NO.
  - ⊕ EXIST. SPLICE CAN
  - NEW SPLICE CAN
  - ▭ EXIST. STA. 228+00 225' LT.
  - ▲ RELOCATED REIL
  - RELOCATED PAPI
  - R REMOVE
- ▭ EXIST. DUCT BANK
  - ▭ NEW DUCT BANK
  - EXIST. TXY CIRCUIT
  - NEW TXY B & K CKT.
  - NEW RWY 13/31 CKT.
  - NEW PAPI CIRCUIT
  - NEW REIL CIRCUIT
  - ▭ NEW DIRECTIONAL BORE
  - G- GREEN LENS
  - R- RED LENS
  - Y- YELLOW LENS

**NOTES:**

- EXISTING RUNWAY EDGE LIGHTS IN THE BAK TAPE SWEEPS SHALL BE USED UNTIL REMOVAL OR RELOCATION OF THE BARRIER SYSTEM. AT THIS TIME, NEW RUNWAY EDGE LIGHTS WILL BE PLACED IN THE FUTURE LOCATIONS.
- NEW CABLING IS SHOWN DISTORTED TO IMPROVE CLARITY.
- EDGE LIGHTS SHALL BE LOCATED AT 10' OFF THE EDGE OF PAVEMENT.
- EDGE LIGHT CABLE SHALL BE LOCATED AT 12' OFF THE EDGE OF PAVEMENT.
- REPLACE IN-PAVEMENT LIGHT. INSTALL NEW L-850-C RUNWAY EDGE LIGHT ON EXISTING L-86B, SIZE C BASE WITH NEW MOUNTING RING (CROUSE HINDS REL-850C1-C). CONTRACTOR SHALL VERIFY DIMENSIONS PRIOR TO ORDERING.

**SPRINGFIELD AIRPORT AUTHORITY**  
**ABRAHAM LINCOLN CAPITAL AIRPORT**  
**SPRINGFIELD, ILLINOIS**

**CONSTRUCT RUNWAY 13/31 RSA IMPROVEMENTS**  
**ELECTRICAL & LIGHTING PLAN 2**

© Copyright CMT, Inc.  
**CMT**  
 CRAWFORD, MURPHY & TILLY, INC.  
 CONSULTING ENGINEERS  
 License No. 184-000618

DESIGN BY:	RLV
DRAWN BY:	DPA
CHECKED BY:	RLV
APPROVED BY:	RLV
DATE:	04/24/07
JOB No:	05035-03
IL PROJ. NO.	SPI-3488
AIP PROJ. NO.	3-17-0096-42
SHEET 37 OF 79 SHEETS	