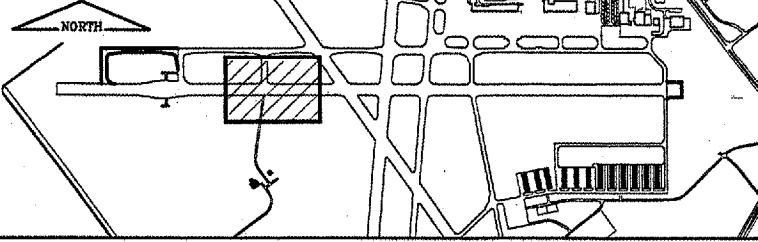


KEYMAP

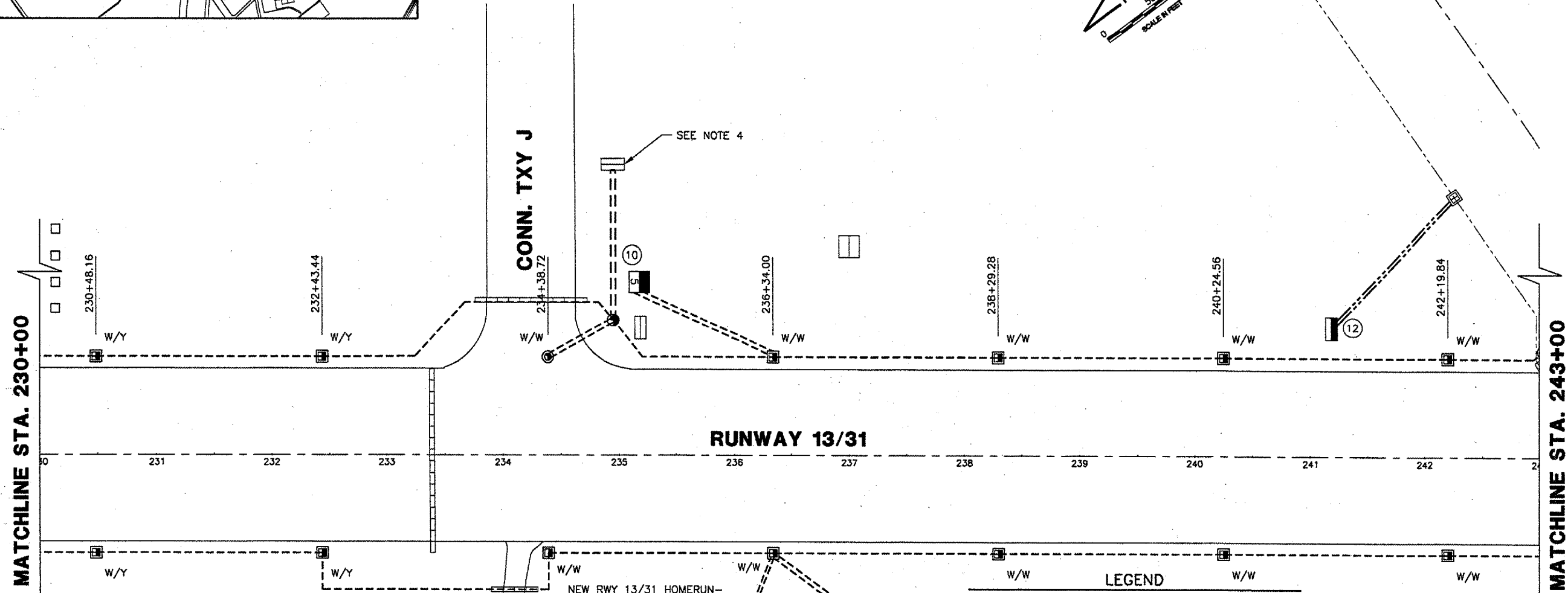


CA003
 K:\Springfield\0503503\Draw\Sheets
 FILE: ELEC03.dwg
 UPDATE BY: Dave Allen
 PLOT DATE: 5/4/2007 10:37 AM
 Base_ExistTopo_TxyB
 Capital_Base
 tbinfo
 BASE_PROPGEO
 BASE_PROPELEC
 KEY

REVISIONS

NUMBER	BY	DATE

0 1 2
 THIS BAR IS EQUAL TO 2"
 AT FULL SCALE (34x22).



RUNWAY 13/31

ATCT ACCESS ROAD

SIGNAGE TABLE

SIGN	STATION	OFFSET
10	235+18.11	150' LT.
11	237+00.55	150' RT.
12	NO CHANGE	

- NOTES:**
- NEW CABLING IS SHOWN DISTORTED TO IMPROVE CLARITY.
 - EDGE LIGHTS SHALL BE LOCATED AT 10' OFF THE EDGE OF PAVEMENT.
 - EDGE LIGHT CABLE SHALL BE LOCATED AT 12' OFF THE EDGE OF PAVEMENT.
 - REMOVE EXISTING HOLD SIGN FROM TAXIWAY CIRCUIT AND ADD TO RUNWAY CIRCUIT. MAKE CABLING REVISIONS TO PROVIDE FOR A COMPLETE TAXIWAY CIRCUIT.

- LEGEND**
- EXISTING STAKE MOUNTED TAXIWAY LIGHT
 - EXISTING BASE MOUNTED RWY LIGHT
 - NEW HIGH INTENSITY RWY EDGE LIGHT
 - ▣ FUTURE HIGH INTENSITY RWY EDGE LIGHT
 - EXISTING BASE MOUNTED TXY LIGHT
 - NEW BASE MOUNTED TXY LIGHT
 - ⊕ EXISTING IN-PAVEMENT RWY EDGE LIGHT
 - ⊙ NEW IN-PAVEMENT RWY EDGE LIGHT
 - NEW THRESHOLD LIGHT
 - NEW DISTANCE REMAINING SIGN & NO.
 - Ⓜ EXISTING AIRFIELD SIGN (SIGN PANELS TO BE REPLACED) & NO.
 - NEW AIRFIELD SIGN & NO.
 - Ⓢ EXIST. SPLICE CAN
 - Ⓢ NEW SPLICE CAN
 - EXIST. DUCT BANK
 - NEW DUCT BANK & #-WAY
 - G- GREEN LENS
 - R- RED LENS
 - W- WHITE LENS
 - Y- YELLOW LENS
 - ▲ RELOCATED REIL
 - R REMOVE
 - EXIST. TXY CIRCUIT
 - NEW TXY B CIRCUIT
 - NEW RWY 13/31 CIRCUIT
 - NEW RWY 18/36 CIRCUIT
 - NEW DIRECTIONAL BORE - 4"

SPRINGFIELD AIRPORT AUTHORITY
ABRAHAM LINCOLN CAPITAL AIRPORT
SPRINGFIELD, ILLINOIS

CONSTRUCT RUNWAY 13/31 RSA IMPROVEMENTS
ELECTRICAL & LIGHTING PLAN 3

© Copyright CMT, Inc.
CMT
 CRAWFORD, MURPHY & TILLY, INC.
 CONSULTING ENGINEERS
 License No. 184-000618

DESIGN BY: RLV
 DRAWN BY: DPA
 CHECKED BY: RLV
 APPROVED BY: RLV
 DATE: 04/24/07
 JOB No: 05035-03
 IL PROJ. NO. SPI-3488
 AIP PROJ. NO. 3-17-0096-42
 SHEET 38 OF 70 SHEETS