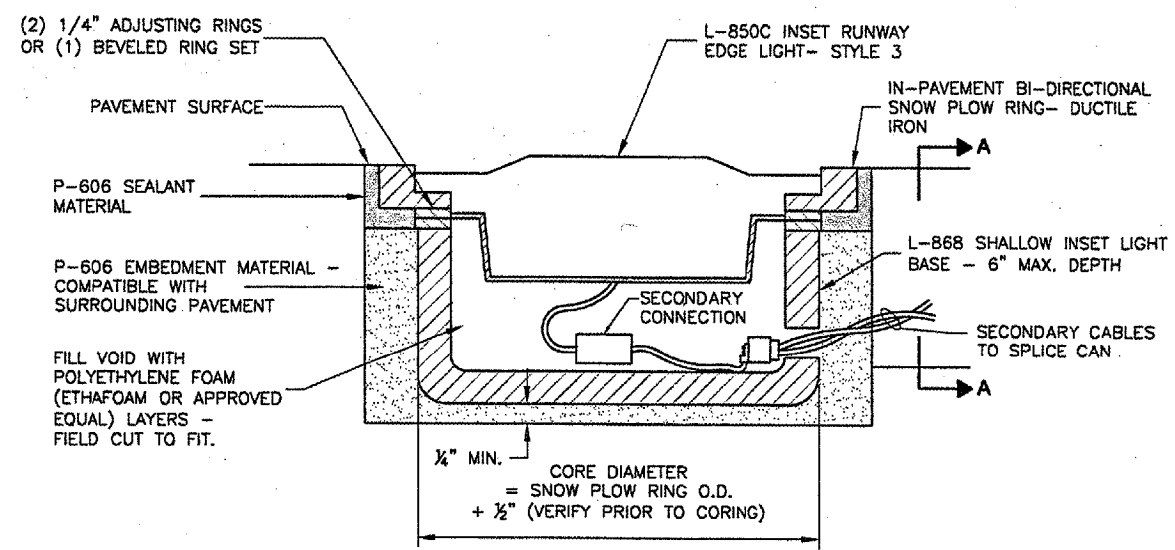
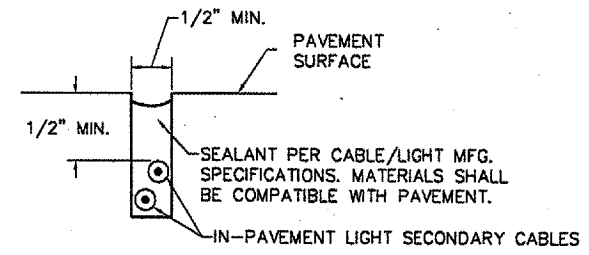


SPLICE CAN DETAIL
N.T.S.



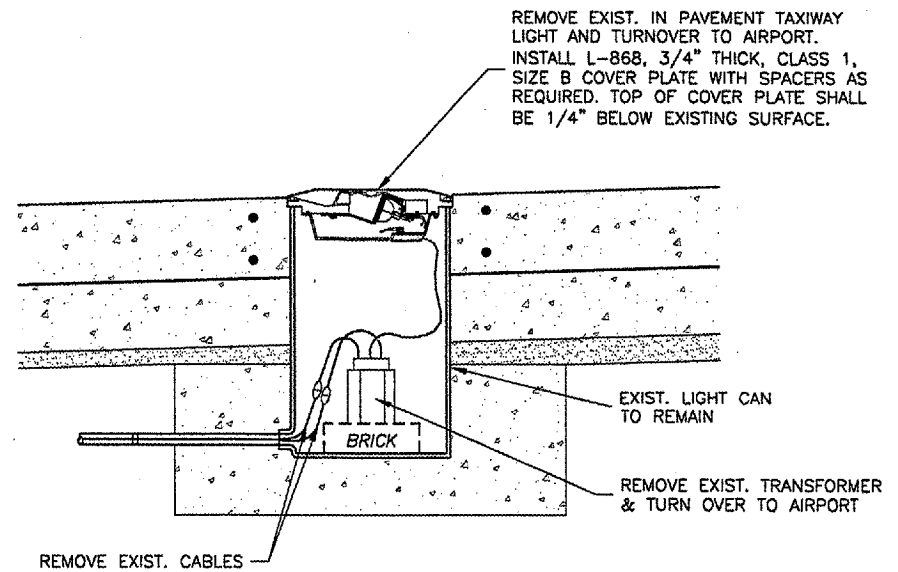
NEW IN-PAVEMENT LIGHT
N.T.S.



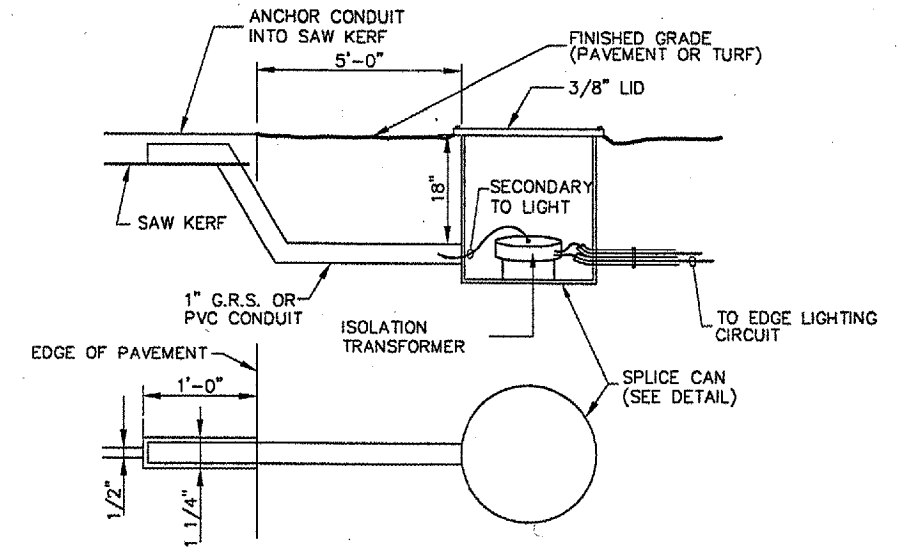
SECTION A-A
SAW KERF DETAIL
N.T.S.

NOTE:
 SAW KERF SHALL UTILIZE PCC PAVEMENT JOINTS WHERE APPLICABLE. SAW KERF LOCATIONS SHALL BE APPROVED BY THE AIRPORT PRIOR TO START OF INSTALLATION OPERATIONS.

- NOTES**
1. CABLE MARKERS SHALL BE INSTALLED AT ALL BENDS AND EVERY 200' ALONG THE HOMERUN.
 2. ITEM 610 CONCRETE SHALL BE USED.
 3. ALL EXPOSED EDGES SHALL BE EDGED WITH A 1/4" RADIUS TOOL.
 4. THE COST OF FURNISHING AND INSTALLING NEW MARKERS SHALL BE INCIDENTAL TO THE ASSOCIATED ITEMS.
 5. A MARKER CONFORMING TO THIS DETAIL MARKED "SPLICE" SHALL BE INSTALLED AT ALL SPLICE LOCATIONS NOT IN LIGHT CANS OR MANHOLES.



IN-PAVEMENT LIGHT REMOVAL
N.T.S.

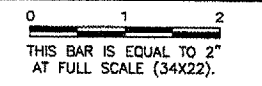


SPLICE CAN LOCATION FOR IN-PAVEMENT LIGHT DETAIL
N.T.S.

IN-PAVEMENT RUNWAY EDGE LIGHT DETAIL
N.T.S.

REVISIONS

NUMBER	BY	DATE



SPRINGFIELD AIRPORT AUTHORITY
ABRAHAM LINCOLN CAPITAL AIRPORT
SPRINGFIELD, ILLINOIS
CONSTRUCT RUNWAY 13/31 RSA IMPROVEMENTS
ELECTRICAL DETAILS 2

© Copyright CMT, Inc.
CMT
 CRAWFORD, MURPHY & TILLY, INC.
 CONSULTING ENGINEERS
 License No. 804-000673

DESIGN BY: RLV
 DRAWN BY: DPA
 CHECKED BY: RLV
 APPROVED BY: RLV
 DATE: 04/24/07
 JOB No: 05035-03
 IL PROJ. NO. SPI-3488
 AIP PROJ. NO. 3-17-0096-42
 SHEET 45 OF 70 SHEETS