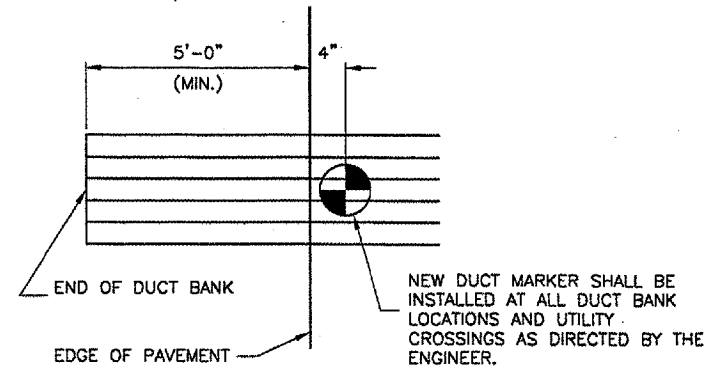
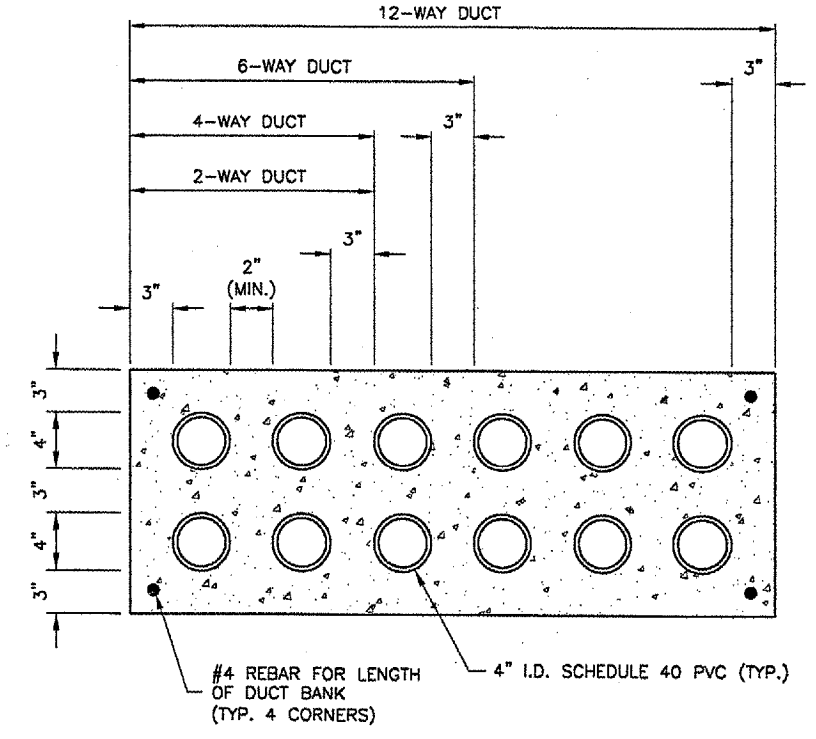


DUCT MARKER DETAILS
N.T.S.



DUCT MARKERS SHALL BE RECESSED AND GROUTED INTO THE PAVEMENTS.

MARKER PLACEMENT



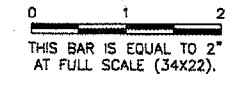
DUCT BANK DETAIL
N.T.S.

NOTES

- DIMENSIONS SHOWN ARE MINIMUM.
- TOP OF CONCRETE ENCASUREMENT TO BE NOT LESS THAN 18" BELOW FINISHED SUBGRADE.
- DUCT CONCRETE SHALL BE ITEM 610 STRUCTURAL P.C.C. CONCRETE.
- ALL DUCT SHALL BE 4" INSIDE DIAMETER.
- LOCATIONS SHOWN ARE APPROXIMATE. DUCT BANKS SHALL BE INSTALLED AT LOCATIONS DESIGNATED BY THE ENGINEER.
- CONTRACTOR SHALL INSTALL DUCT BANKS AT A DEPTH WHICH WILL NOT CONFLICT WITH ELEVATION SENSITIVE UTILITIES.
- A PULL WIRE SHALL BE PROVIDED IN EACH UNUSED CONDUIT. UNUSED DUCT SHALL BE SEALED WITH PVC PLUGS/CAPS TO THE SATISFACTION OF THE ENGINEER.
- DUCT BANKS SHALL EXTEND A MINIMUM OF 5' BEYOND THE NEW EDGE OF PAVEMENT.

REVISIONS

NUMBER	BY	DATE



SPRINGFIELD AIRPORT AUTHORITY
ABRAHAM LINCOLN CAPITAL AIRPORT
SPRINGFIELD, ILLINOIS

CONSTRUCT RUNWAY 13/31 RSA IMPROVEMENTS

ELECTRICAL DETAILS 3

© Copyright CMT, Inc.

CMT
 CRAWFORD, MURPHY & TILLY, INC.
 CONSULTING ENGINEERS
 License No. 184-000613

DESIGN BY: RLV
 DRAWN BY: DPA
 CHECKED BY: RLV
 APPROVED BY: RLV
 DATE: 04/24/07
 JOB No: 05035-03