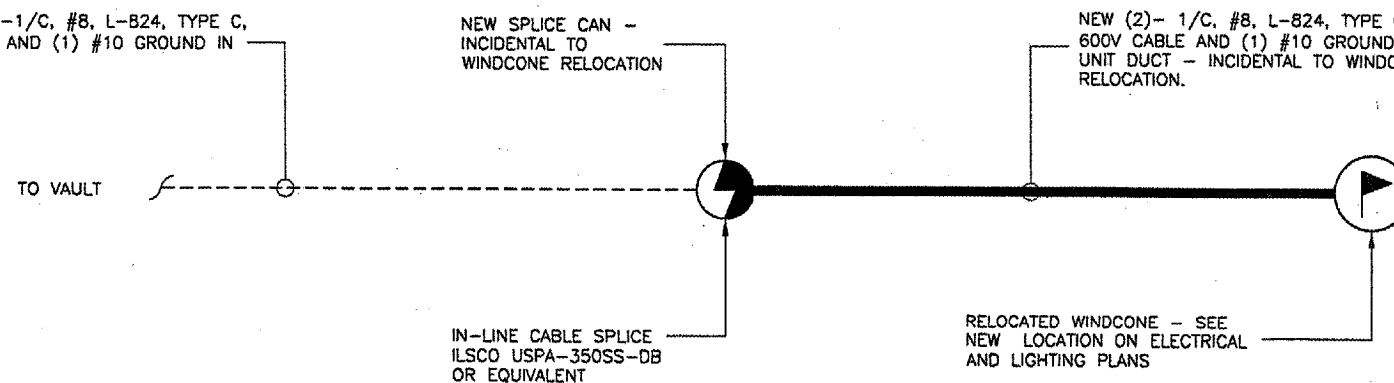
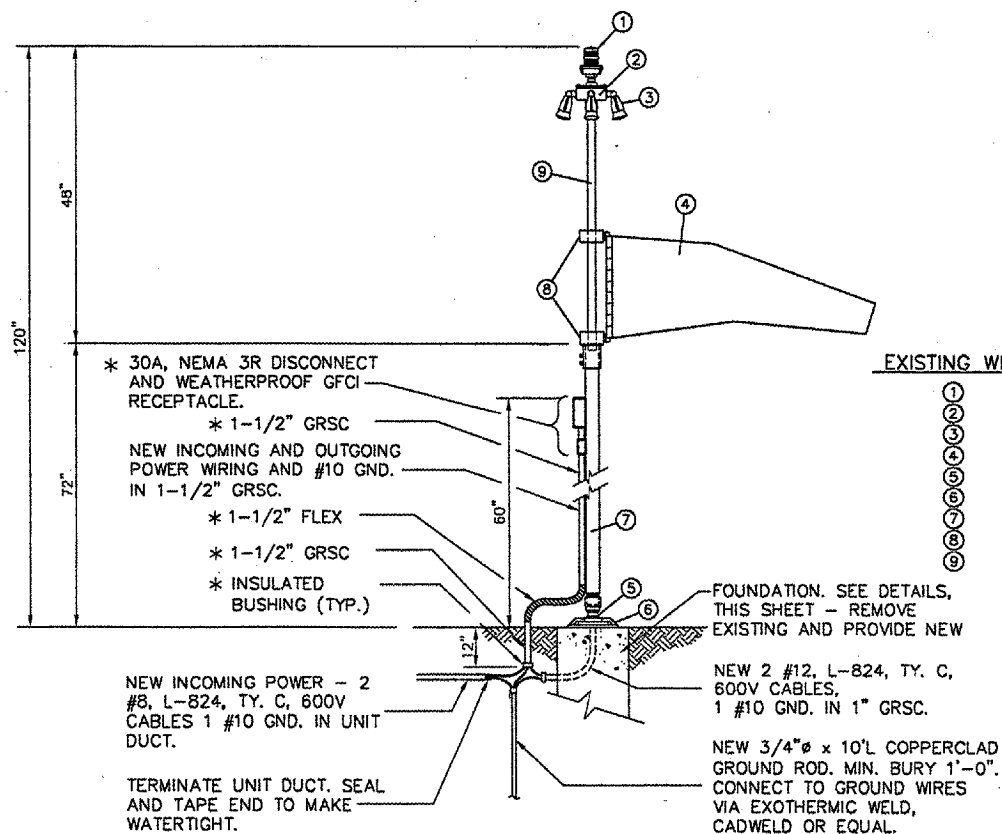
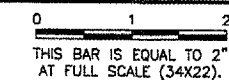


EXISTING PLAN
N.T.S.



NEW PLAN
N.T.S.

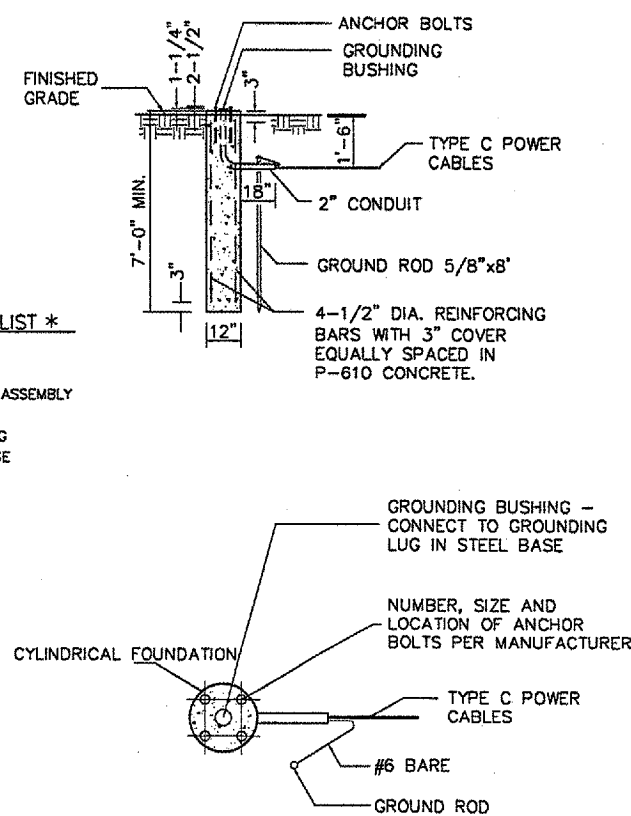
REVISIONS		
NUMBER	BY	DATE



NOTE:
 * - INDICATES MATERIAL TO BE RELOCATED AND RE-USED.

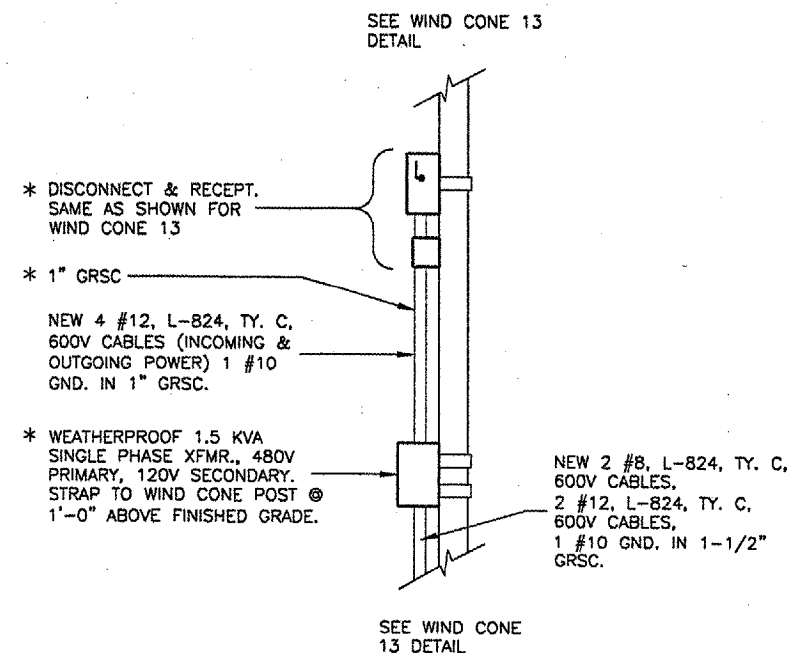
WIND CONE 13 DETAIL
N.T.S.

- EXISTING WIND CONE EQUIP. LIST ***
- ① OBSTRUCTION LIGHT
 - ② JUNCTION BOX
 - ③ EXTERNAL LIGHTING ASSEMBLY
 - ④ WIND SOCK 8 FT.
 - ⑤ FRANGIBLE COUPLING
 - ⑥ POLE-SUPPORT BASE
 - ⑦ ALUMINUM MAST
 - ⑧ BEARING ASSEMBLY
 - ⑨ SHAFT ASSEMBLY



NOTE:
 ALL MATERIAL, EQUIPMENT AND LABOR ARE INCIDENTAL TO WIND CONE RELOCATION.

EXISTING AND NEW FOUNDATION DETAILS
N.T.S.



NOTE:
 * - INDICATES MATERIAL TO BE RELOCATED AND RE-USED.

WIND CONE 31 DETAIL
N.T.S.

SPRINGFIELD AIRPORT AUTHORITY
ABRAHAM LINCOLN CAPITAL AIRPORT
SPRINGFIELD, ILLINOIS
CONSTRUCT RUNWAY 13/31 RSA IMPROVEMENTS
WIND CONE DETAILS

© Copyright CMT, Inc.
CMT
 CRAVNFORD, MARRIY & TLLY, INC.
 CONSULTING ENGINEERS
 License No. 184-000613

DESIGN BY:	RLV
DRAWN BY:	CMT
CHECKED BY:	RLV
APPROVED BY:	RLV
DATE:	04/24/07
JOB No:	05035-03
IL PROJ. NO. SPI-3488	
AIP PROJ. NO. 3-17-0096-42	