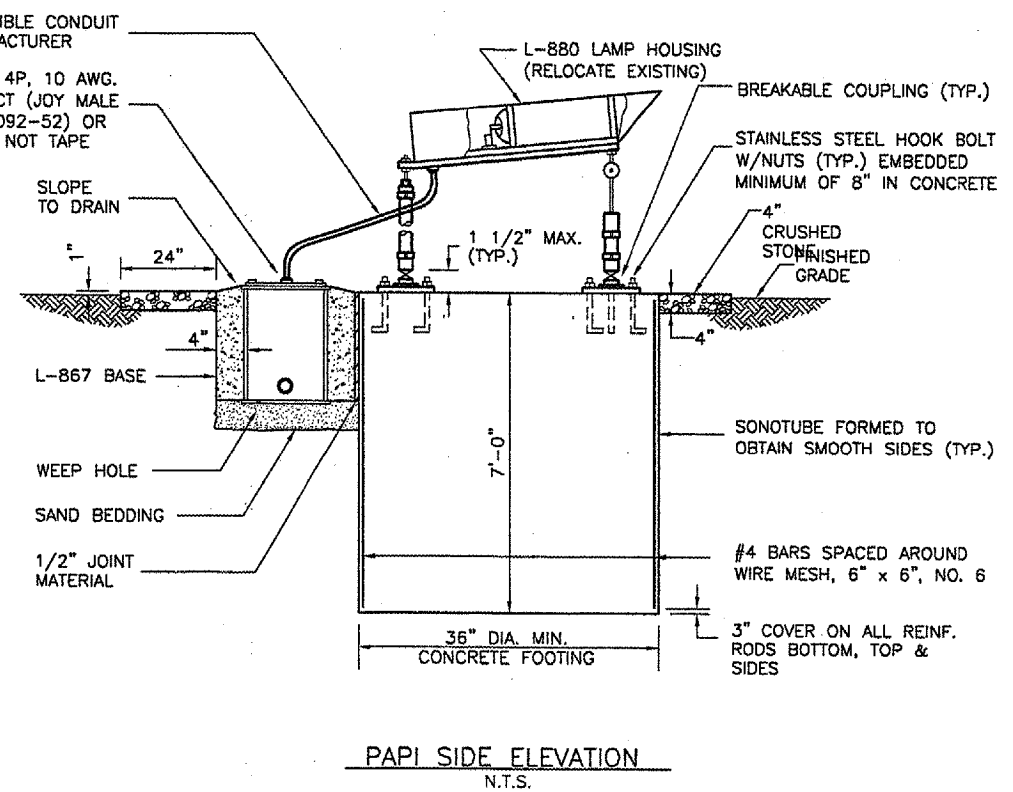
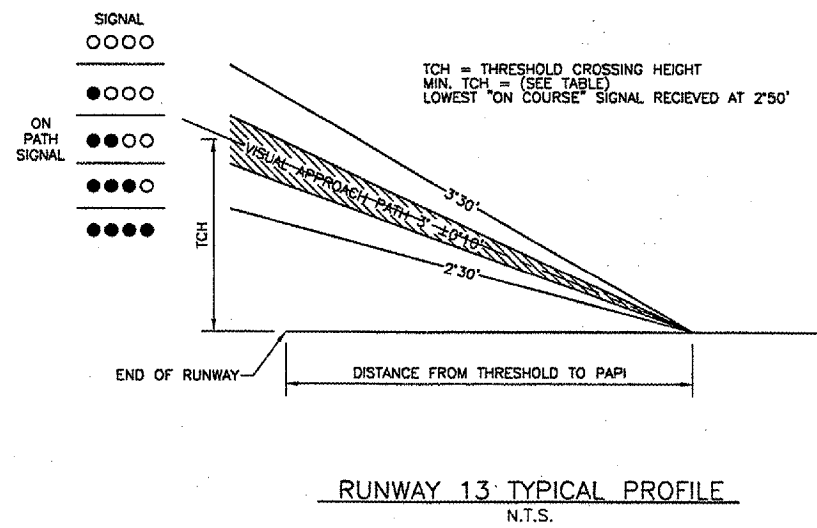
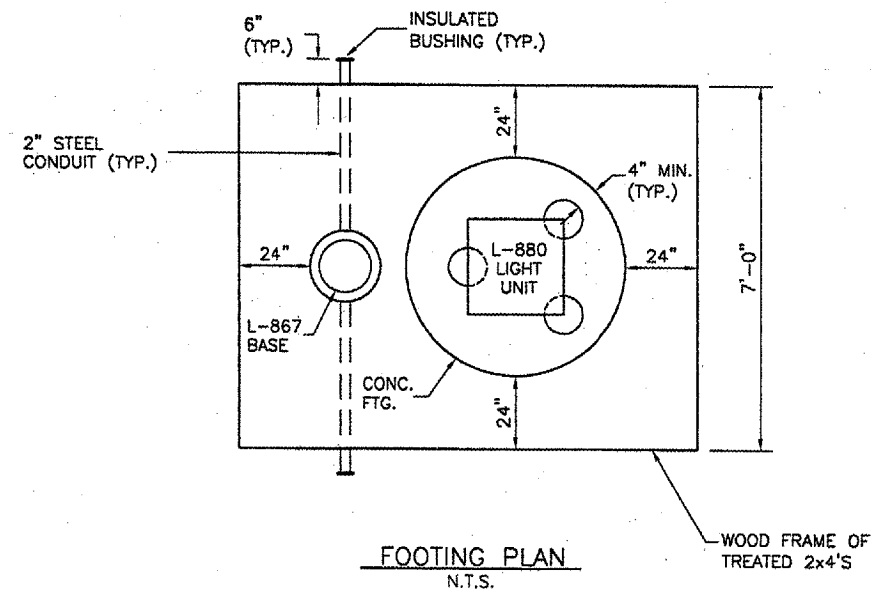
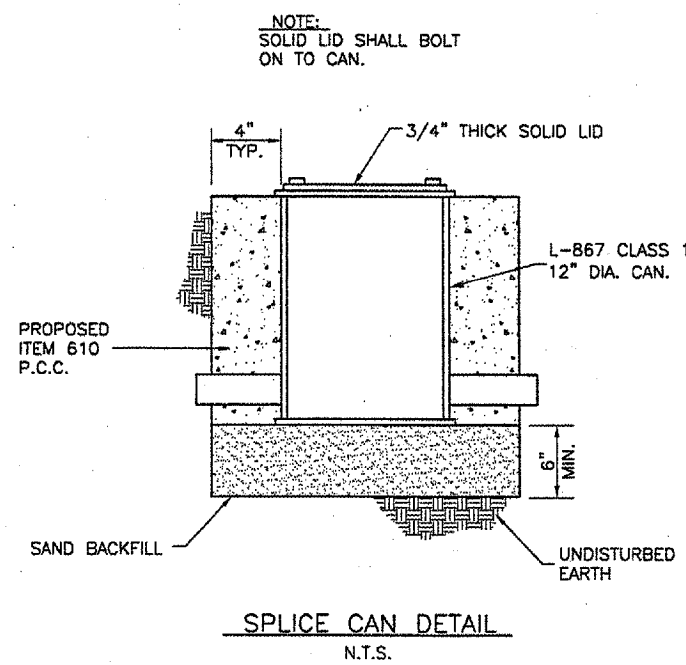
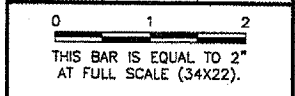


REVISIONS		
NUMBER	BY	DATE



AIMING OF TYPE L-880 (4-BOX) PAPI RELATIVE TO
PRESLECTED GLIDE PATH (3'00')

LIGHT UNIT	AIMING ANGLE (IN MINUTES OF ARC)	STANDARD INSTALLATION
UNIT NEAREST RUNWAY	30' ABOVE GLIDE PATH	
NEXT ADJACENT UNIT	10' ABOVE GLIDE PATH	
NEXT ADJACENT UNIT	10' BELOW GLIDE PATH	
NEXT ADJACENT UNIT	30' BELOW GLIDE PATH	

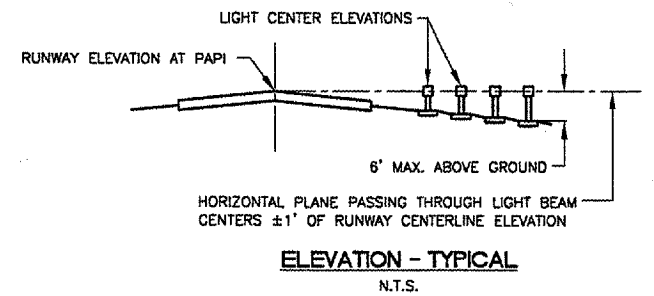
FOUNDATIONS:
 FOUNDATIONS FOR MOUNTING LIGHT BOXES SHALL BE MADE OF ITEM 610 CONCRETE. ALL LIGHT BOXES SHALL BE FRANGIBLY MOUNTED TO THE FOUNDATION.

AZIMUTHAL AIMING:
 EACH LIGHT UNIT SHALL BE AIMED OUTWARD INTO THE APPROACH ZONE ON A LINE PARALLEL TO THE RUNWAY CENTERLINE WITHIN A TOLERANCE OF ±1/2 DEGREE.

MOUNTING HEIGHT TOLERANCES:
 THE BEAM CENTERS OF ALL LIGHT UNITS SHALL BE WITHIN ±1 INCH OF A HORIZONTAL PLANE AT THE ELEVATION GIVEN IN THE TABLE.

TOLERANCE ALONG LINE PERPENDICULAR TO RUNWAY:
 THE FRONT FACE OF EACH LIGHT UNIT IN A BAR SHALL BE LOCATED ON A LINE PERPENDICULAR TO THE RUNWAY CENTERLINE WITHIN ±6 INCHES.

RUNWAY	13
HEIGHT GROUP USED FOR SITING	3
THRESHOLD STATIONING	213+00.55
THRESHOLD ELEVATION	587.77'
THRESHOLD CROSSING HEIGHT	50'
STATION FOR MIDPOINT OF PROJECTORS	222+36.74
GLIDE PATH ANGLE *	3°
ELEVATION @ OF APERTURE	588.73
UNIT 1 EXISTING GROUND ELEVATION	586.65
UNIT 2 EXISTING GROUND ELEVATION	585.78
UNIT 3 EXISTING GROUND ELEVATION	585.19
UNIT 4 EXISTING GROUND ELEVATION	584.58



PAPI INSTALLATION DETAIL
N.T.S.

PAPI-L-880 (4BOX)
N.T.S.

* THE VISUAL GLIDE PATH ANGLE IS THE CENTER OF THE ON COURSE ZONE AND IS MEASURED FROM THE HORIZONTAL

SPRINGFIELD AIRPORT AUTHORITY
ABRAHAM LINCOLN CAPITAL AIRPORT
SPRINGFIELD, ILLINOIS
CONSTRUCT RUNWAY 13/31 RSA IMPROVEMENTS
PAPI DETAIL

© Copyright CMT, Inc.
CMT
 CRAWFORD, MURPHY & TILLY, INC.
 CONSULTING ENGINEERS
 License No. 784-000633

DESIGN BY:	RLV
DRAWN BY:	DPA
CHECKED BY:	RLV
APPROVED BY:	RLV
DATE:	04/24/07
JOB No:	05035-03
IL PROJ. NO.	SPI-3488
AIP PROJ. NO.	3-17-0096-42