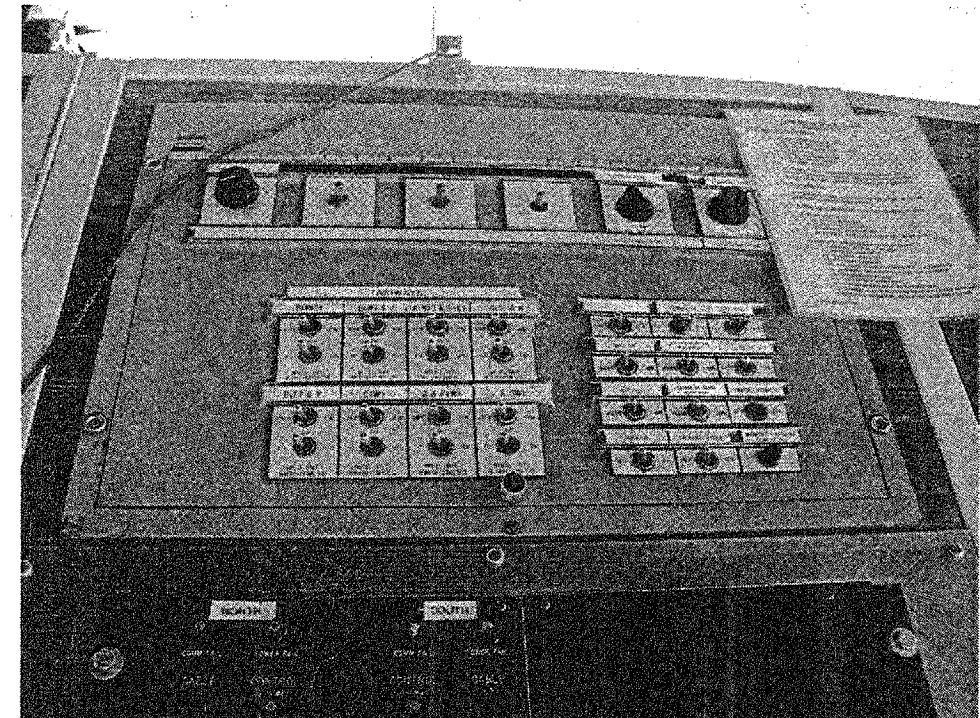
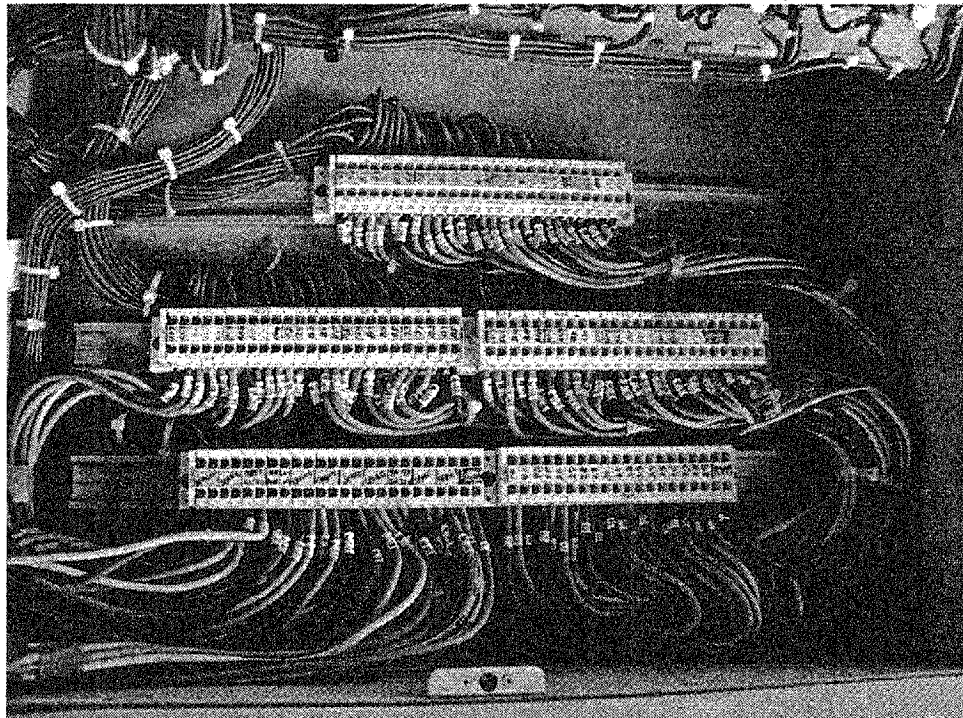


REVISIONS

NUMBER	BY	DATE


0 1 2  
 THIS BAR IS EQUAL TO 2"  
 AT FULL SCALE (34X22).



L-821 REMOTE CONTROL PANEL LAYOUT  
 N.T.S.

**L-821 PANEL REMOVAL NOTES**

1. THE EXISTING L-821 PANEL SHALL BE DISCONNECTED AND REMOVED, INCLUDING ALL WIRING FROM CONTROL TOWER TO VAULT. SEE SPECIFICATIONS FOR ADDITIONAL INFORMATION.

  
**SPRINGFIELD AIRPORT AUTHORITY**  
**ABRAHAM LINCOLN CAPITAL AIRPORT**  
**SPRINGFIELD, ILLINOIS**

**CONSTRUCT RUNWAY 13/31 RSA IMPROVEMENTS**  
**EXISTING TOWER L-821 PANEL**

© Copyright CMT, Inc.  
**CMT**  
 CRAWFORD, MURPHY & TILLY, INC.  
 CONSULTING ENGINEERS  
 License No. 784-00053

DESIGN BY: WDP  
 DRAWN BY: DPA  
 CHECKED BY: *RLN*  
 APPROVED BY: *RLN*  
 DATE: 04/24/07  
 JOB No: 05035-03  
 ILL. PROJ. NO. SPI-3488  
 AIP PROJ. NO. 3-17-0096-42  
 SHEET 62 OF 70 SHEETS