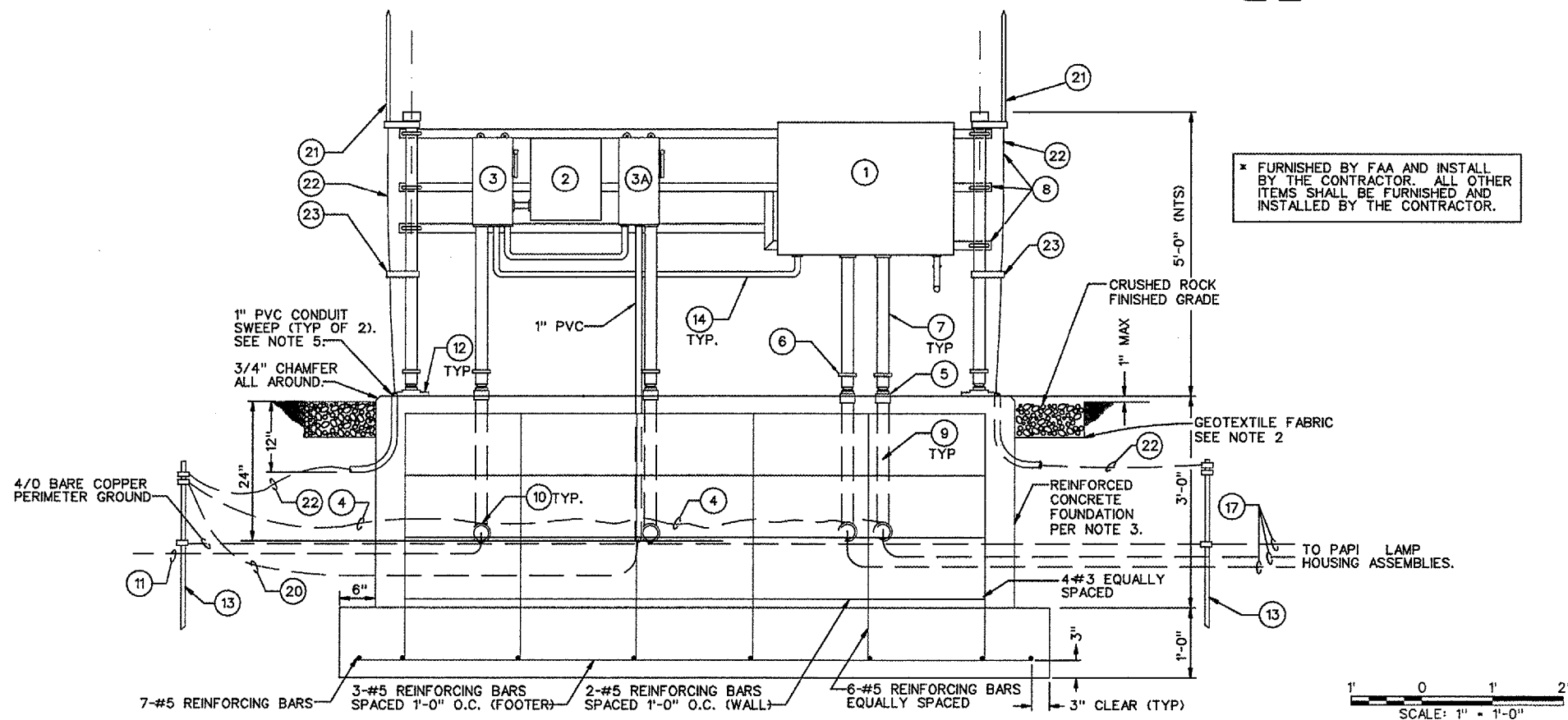


**NUMBERED LEGEND:**

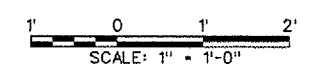
- 1 PAPI POWER AND CONTROL ASSEMBLY CABINET
- 2 SURGE ARRESTER: LPC 20206-7.
- 3 DISCONNECT SWITCH, SQUARE D CAT. NO. H222NRB.
- 3A DISCONNECT SWITCH, SQUARE D CAT. NO. H221NRB.
- 4 #6 BARE COPPER GROUND WIRE.
- 5 2" RIGID STEEL CONDUIT COUPLING. SEE NOTE 5.
- 6 2" FRANGIBLE COUPLING
- 7 2" EMT CONDUIT
- 8 UNISTRUT 3000 SERIES CHANNEL
- 9 2" GALVANIZED RIGID STEEL CONDUIT, AFTER GROUNDING BUSHING TRANSITION TO PVC CONDUIT
- 10 GROUNDING BUSHING
- 11 THREE 1/C #1, 600V TYPE U.S.E. POWER CABLES AND 1-#6 BARE COPPER GUARD WIRE PER SHEET 2 OF 7.
- 12 GALV. THREADED FLOOR FLANGE WITH MIN. 4 ANCHORS EACH (3 REQD.).
- 13 3/4" X 10' COPPERCLAD GROUND ROD WITH CONDUCTORS CONNECTED PER PARAGRAPH 16A.4C OF SPECIFICATION FAA-GL-918D. GROUND RODS ARE SPACED A MINIMUM OF 10' APART.
- 14 1" SEAL TIGHT
- 15 NOT USED
- 16 NOT USED
- 17 FOUR 6 PR#19 SH CONTROL CABLES IN 2" C, 4-#6 GREEN GND AND 8-1/C #8 POWER CABLES IN 2" C, AND 1-#6 COPPER GUARD WIRE PER SECTION "B", DWG GL-D-2795-7-6.
- 18 NOT USED
- 19 NOT USED
- 20 #2 GROUNDING ELECTRODE.
- 21 THOMPSON NO. 660 AIR TERMINAL, THOMPSON NO 27 SWIVEL AND THOMPSON NO. 240XP-4 PIPE BRACKET, 2 PLACES
- 22 THOMPSON NO. 32 DOWN CONDUCTOR
- 23 THOMPSON NO. 238 PIPE CLAMP

**NOTES:**

1. CONTRACTOR WAS RESPONSIBLE FOR LOCATING AND PROTECTING UTILITIES. THE CONTRACTOR HAND-DUG THE TRENCH IN THE VICINITY OF UNDERGROUND UTILITIES. ANY DAMAGE DONE TO UTILITIES WAS REPAIRED BY THE CONTRACTOR AT NO EXPENSE TO THE CONTRACT.
2. CONTRACTOR REMOVED 6" OF TOPSOIL, COMPACT THE SUBGRADE, AND PLACED GEOTEXTILE FABRIC CONFORMING TO SECTION 2B.3 OF SPECIFICATION FAA-GL-918C OVER SUBGRADE PRIOR TO PLACING 6" COMPACTED DEPTH OF 3/4" CRUSHED ROCK OVER EXCAVATED AREA.
3. CONCRETE WAS PLACED AND CURED IN ACCORDANCE WITH SECTION 3B.2 OF THE SPECIFICATION FAA-GL-918C (ITEM 610).
4. FOR WIRING DIAGRAM, SEE DWG GL-D-2795-7-4.
5. TOPS OF COUPLINGS 5 AND PVC CONDUITS FOR THOMPSON DOWN CONDUCTORS ARE NO MORE THAN 1/4" ABOVE FOUNDATION TOP.



**1** DETAIL: PAPI POWER AND CONTROL RACK



REVISIONS		
NUMBER	BY	DATE

**DUPAGE AIRPORT  
WEST CHICAGO, ILLINOIS**

**REMARK RUNWAY 10-28, RUNWAY 28 PAPI**

**POWER AND CONTROL INSTALLATION  
PAPI - RUNWAY 28**

**CMT**  
CRAWFORD, MURPHY & TILLY, INC.  
CONSULTING ENGINEERS  
License No. 84-000618

**DPA**  
DuPage Airport

DESIGN BY:	AB
DRAWN BY:	JRO
CHECKED BY:	AB
APPROVED BY:	DLP
DATE:	04/20/07
JOB No:	07257-04

**GL-D-2795-7-3**