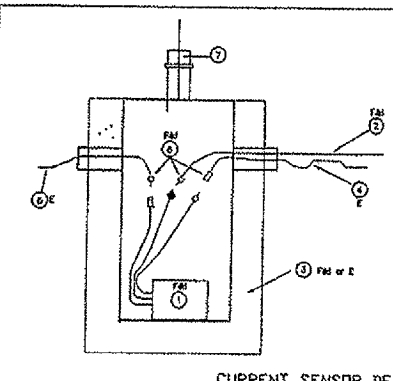
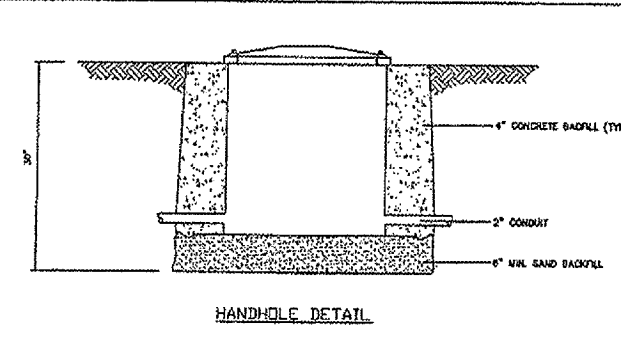
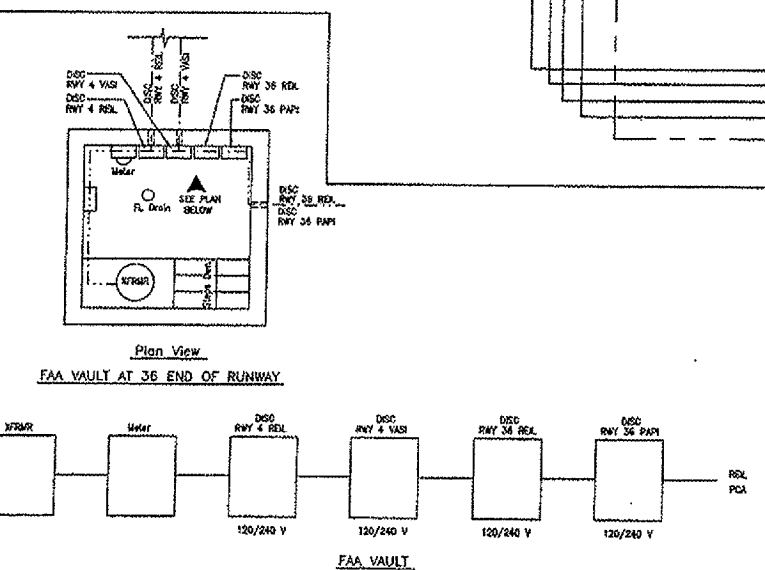
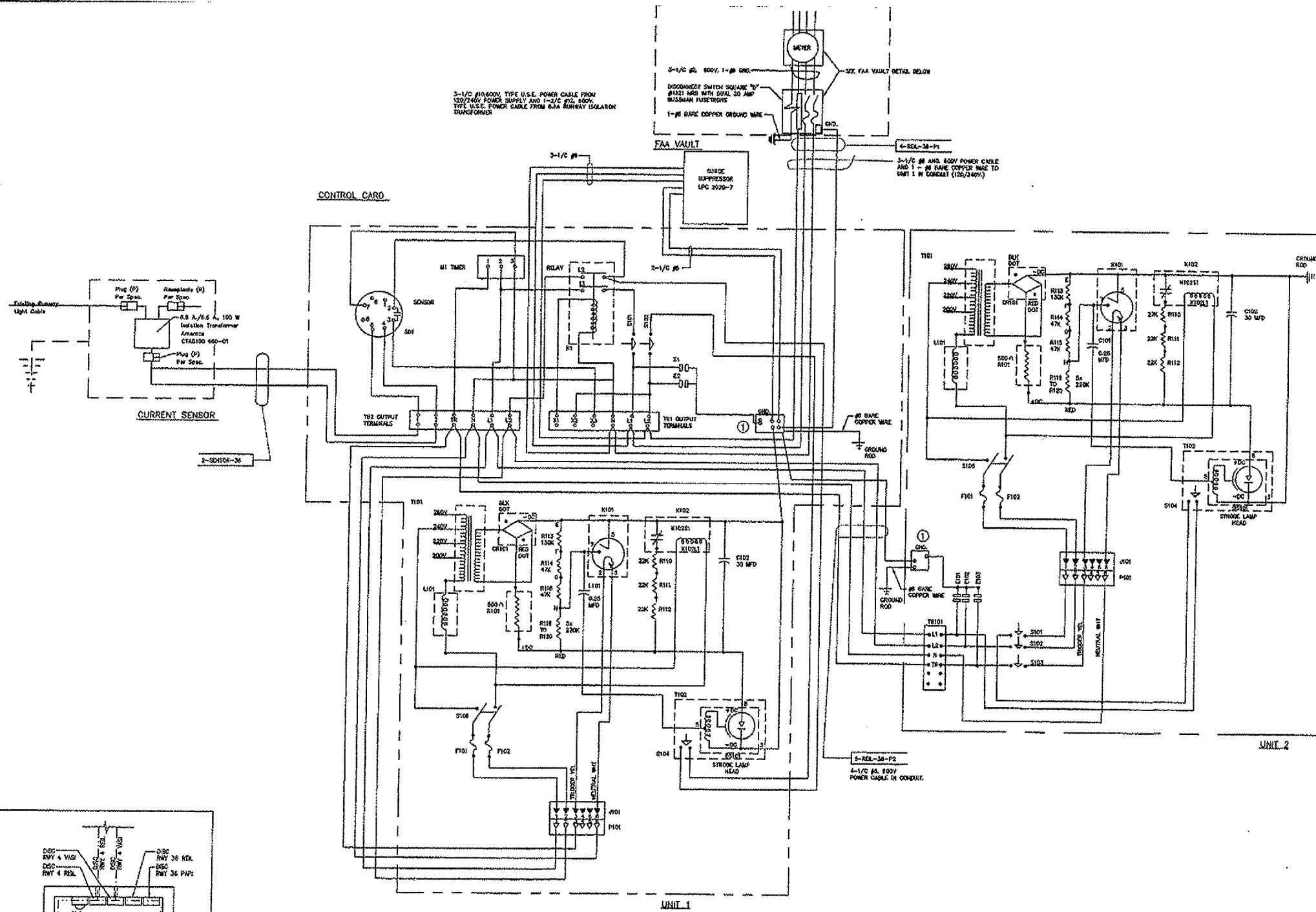


REIL WIRING DIAGRAM IS SHOWN FOR INFORMATION ONLY. COORDINATE WITH EXISTING REIL MANUFACTURER.

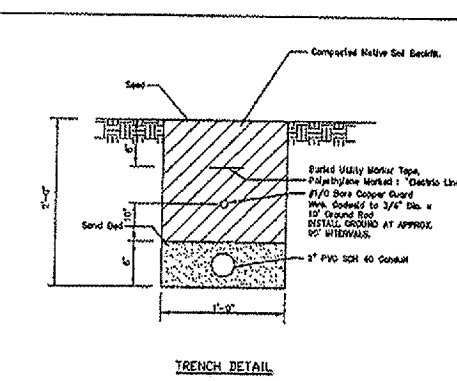
REVISIONS		
NUMBER	BY	DATE

0 1 2
 THIS BAR IS EQUAL TO 2" AT FULL SCALE (34X22).

NOTES
 ① CONTRACTOR TO FURNISH AND INSTALL GROUND BASS ON THE UNIT 1 AND UNIT 2 CABINETS.



- Notes
- FAM ① Amnace Isolation Transformer to match existing airport IRL system.
 - FAM ② 1-2 1/2 800V #10 AWG Armored cable. Rating 750°C. Conductor to REIL Control Cabinet Terminal 1 & 2. (See P&ID)
 - FAM or E ③ Existing runway light can or Joquah 10-1 Light Base can.
 - E ④ Existing Airport lighting circuit.
 - E ⑤ Existing Airport lighting circuit.
 - FAM ⑥ Compatible lock connectors.
 - E ⑦ Existing Airport runway or taxiway light.
- FAM = Furnish and Install
 E = Existing
 FAM or E = Furnish and Install or Existing



© Copyright CMT, Inc.
CMT
 CRAWFORD, MURPHY & TILLY, INC.
 CONSULTING ENGINEERS
 License No. 184-000513



DESIGN BY: AB
 DRAWN BY: JRO
 CHECKED BY: AB
 APPROVED BY: DLP
 DATE: 04/20/07
 JOB No: 07257-04
 IL PROJECT: DPA-3695
 A.I.P. PROJECT: 3-17-0017-B21
 SHEET 10 OF 10 SHEETS

DUPAGE AIRPORT
 WEST CHICAGO, ILLINOIS
 REMARK RUNWAY 10-28, RUNWAY 28 PAPI
 REIL WIRING DIAGRAM