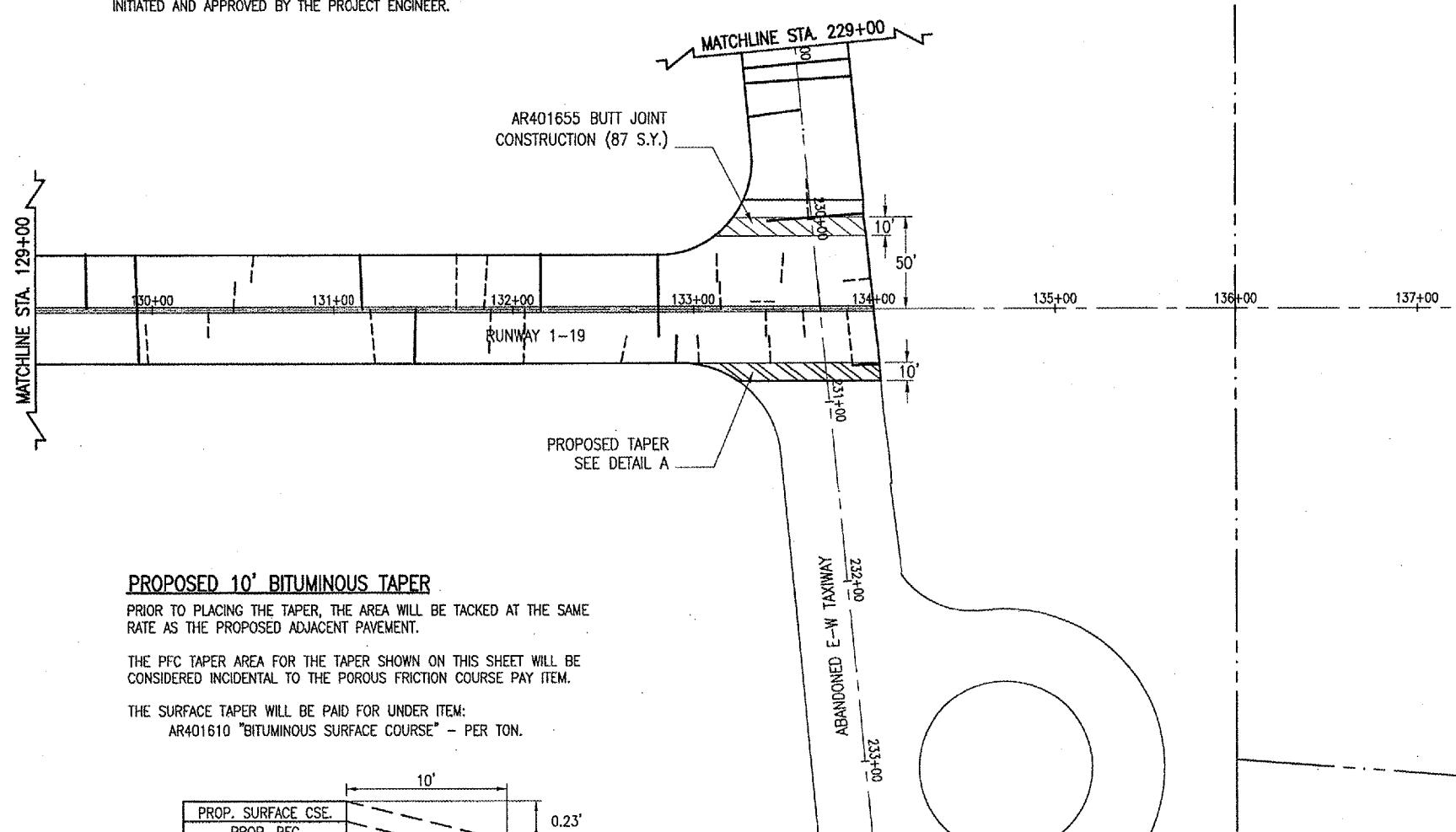


RUNWAY 1-19 QUANTITIES				
ITEM NO.	DESCRIPTION	UNIT	QUANTITY	AS BUILT QUANTITY
AR201661	CLEAN & SEAL BITUMINOUS CRACKS	L.F.	2,863	
AR401650	BITUMINOUS PAVEMENT MILLING	S.Y.	3,167	
AR401650	BUTT JOINT CONSTRUCTION	S.Y.	167	
AR401915	REM. & REP. BIT. PAVEMENT-TYPE A	S.Y.	653	
AR401916	REM. & REP. BIT. PAVEMENT-TYPE B	S.Y.	3,292	

BUTT JOINT CONSTRUCTION NOTE

THE PROJECT WAS BASED ON ALL THE PFC BEING PLACED PRIOR TO OVERLAYING RUNWAY 1-19 WITH BITUMINOUS SURFACE. THE BUTT JOINT SHOWN ON THIS PAGE WAS LOCATED WITH THAT PROCESS IN MIND. IF PAVING IS NOT INSTALLED IN THIS ORDER, AN ALTERNATIVE MUST BE INITIATED AND APPROVED BY THE PROJECT ENGINEER.

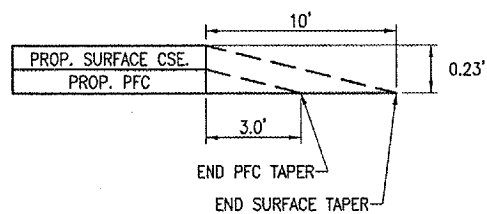


PROPOSED 10' BITUMINOUS TAPER

PRIOR TO PLACING THE TAPER, THE AREA WILL BE TACKED AT THE SAME RATE AS THE PROPOSED ADJACENT PAVEMENT.

THE PFC TAPER AREA FOR THE TAPER SHOWN ON THIS SHEET WILL BE CONSIDERED INCIDENTAL TO THE POROUS FRICTION COURSE PAY ITEM.

THE SURFACE TAPER WILL BE PAID FOR UNDER ITEM:
AR401610 "BITUMINOUS SURFACE COURSE" - PER TON.



DETAIL "A"
"NOT TO SCALE"

LEGEND

- EXISTING PAVEMENT
- PROPOSED OVERLAY
- PROPOSED BUTT JOINT CONSTRUCTION
- PROPOSED BITUMINOUS TAPER
- PROPOSED REM. & REP. BIT. PAVEMENT - TYPE A (4' WIDE)
- PROPOSED REM. & REP. BIT. PAVEMENT - TYPE B (10' WIDE)
- CLEAN AND SEAL BITUMINOUS CRACKS



0' 25' 50' 100'
FULL SIZE SCALE: 1" = 50'
HALF SIZE SCALE: 1" = 100'

DATE	REVISION	BY

EFFINGHAM COUNTY
MEMORIAL AIRPORT
EFFINGHAM, ILLINOIS

ILL. Project No. 80407RWD 0800 Filename: R-111PRP.DWG Scale: 1" = 50' Date: 02/15/07	LAYOUT: CCC 02/15/07 DRAWN: KDM 02/15/07 REVIEWED: CAH 04/23/07
---	---



RECONSTRUCT
RUNWAY 1-19
PROPOSED PAVEMENT
PREPARATION PLAN
STA. 129+00 TO STA. 135+00

APR 27, 2007 8:24 AM BAK I:\AIRPORTS\EFFINGHAM\B04-07RWY\AIRPORT\SHETS\R-111PRP.DWG -- Sta. 129+00 to Sta. 135+00

IL PROJ.: 1H2-3688 A.I.P. PROJ.: 3-17-0040-B10