

- LEGEND:**
- EXTG EDGE LIGHT
 - EXTG GUIDANCE SIGN
 - EXTG ELECTRICAL CABLE
 - EXTG STORM SEWER, FIELD TILE OR UNDERDRAIN
 - EXTG INLET
 - EXTG OUTLET
 - EXTG STORM MANHOLE
 - EXTG SANITARY MANHOLE
 - EXTG DRAINAGE DITCH
 - EXTG CONDUIT OR DUCT BANK
 - PROPOSED MANHOLE
 - PROPOSED INLET
 - PROPOSED FLARED END SECTION
 - PROPOSED STORM SEWER, SANITARY SEWER OR UNDERDRAIN
 - PROPOSED DRAINAGE STRUCTURE NUMBER



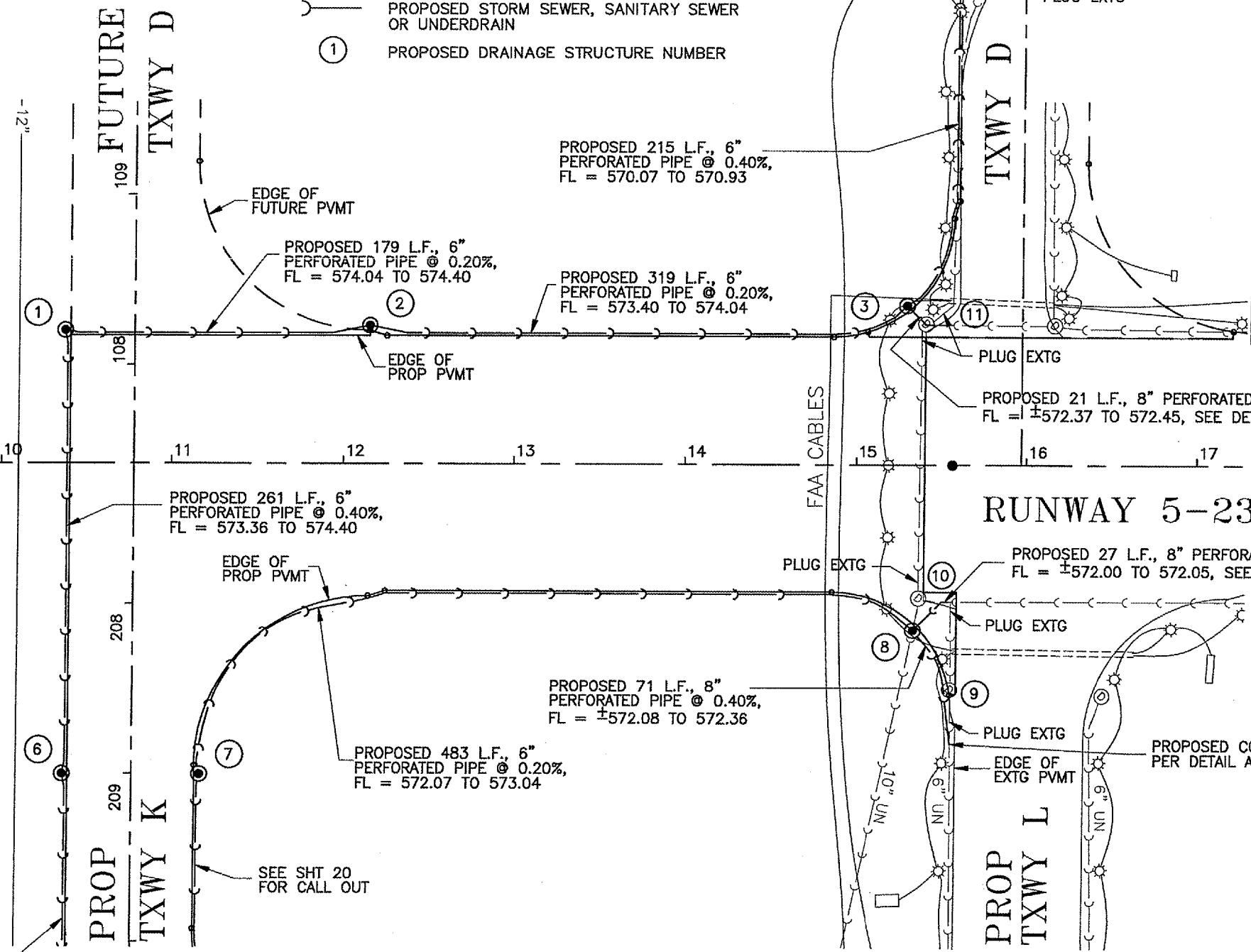
PROPOSED 28 L.F., 8" PERFORATED PIPE @ 0.40%,
 FL = ±572.59 TO 572.70, SEE DETAIL A ON SHT 20

PROPOSED 93 L.F., 12" DIA.,
 STM SEW. CL. IV @ 0.40%,
 FL = 569.70 TO 570.07

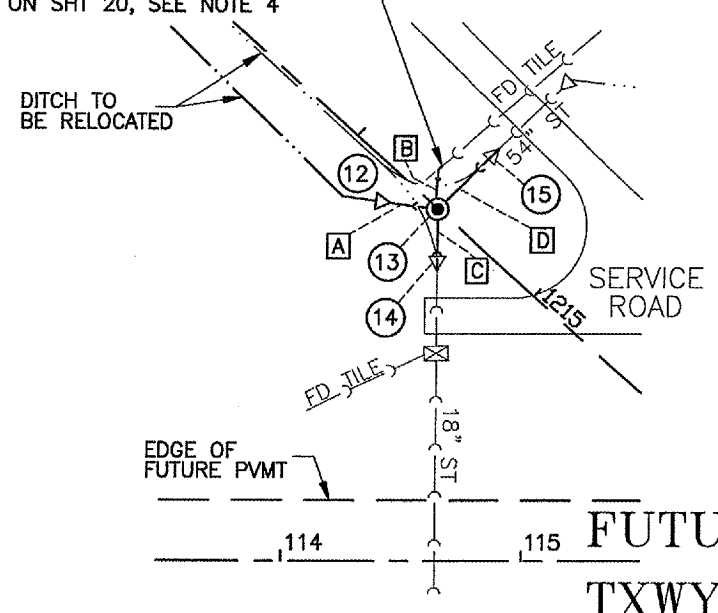
DO NOT DISTURB EXISTING
 CABLE UNTIL REPLACEMENT
 CABLE IS IN SERVICE

DRAINAGE STRUCTURE SCHEDULE

NUMBER	LOCATION	TYPE	ℓ ELEV.	LID OR GRATE ELEV.	REMARK
1	10+37, LT. 78'	MANHOLE SPL., 2' DIA.	574.40'	577.30'	
2	12+15, LT. 81'	MANHOLE SPL., 2' DIA.	574.04'	577.17'	
3	15+29, LT. 93.5'	MANHOLE SPL., 2' DIA.	NW=570.93' NE=572.37' S=573.40'	577.35'	SEE DETAIL "A" ON SHT 20
4	15+56, LT. 299'	MANHOLE SPL., 2' DIA.	NE=572.59' SW=570.07' SE=570.07'	MEET EXTG, ±575.30'	SEE DETAIL "A" ON SHT 20
5	14+64, LT. 315'	EXISTING INLET	±569.69'	±572.49'	EXISTING, TO REMAIN
6	10+37, RT. 183.12'	MANHOLE SPL., 2' DIA.	573.36'	575.94'	
7	11+18, RT. 183.12'	MANHOLE SPL., 2' DIA.	572.96'	575.94'	PROP NW FL = 573.04 PROP SE FL = 572.96
8	15+33.5, RT. 97.7'	MANHOLE SPL., 2' DIA.	MEET EXTG, ±571.95'	577.20'	SEE DETAIL "A" ON SHT 20
9	15+56, RT. 132.3'	EXISTING MANHOLE	±572.24'	±576.60'	TO BE REMOVED
10	15+37, RT. 78.6'	EXISTING MANHOLE	±571.93'	±577.70'	TO BE REMOVED
11	15+40, LT. 82.5'	EXISTING MANHOLE	±572.45'	±577.80'	TO BE REMOVED
12	114+38, LT. 150.64'	PRC FLARED END SECTION, ELLIPTICAL, EQ ROUND SIZE 60"	568.30'	---	
13	114+64, LT. 147.3'	MANHOLE, 8' DIA. WITH FLAT SLAB TOP	568.30'	575.00'	SW=568.30' SE=568.54' NW=568.30' N=569.26'
14	114+64, LT. 127.5'	EXISTING PRC FLARED END SECTION, 18" DIA.	±568.41'	---	TO BE REMOVED
15	114+85, LT. 168.3'	EXISTING PRC FLARED END SECTION, ELLIPTICAL, EQ ROUND SIZE 54"	±569.30'	---	TO BE REMOVED



PROP. GROUT COLLAR PER DETAIL "A" ON SHT 20, SEE NOTE 4



TAXIWAY D AREA

TAXIWAY D AREA STORM SEWER SCHEDULE

PIPE RUN LETTER	LENGTH, L.F.	SIZE & TYPE	PIPE SLOPE	START / END FLOWLINES
A	15'	60" DIA. EQIV. ELLIPTICAL, CL I	0.010%	568.30 TO 568.30
B	18'	8" DIA. ROUND, PERFORATED PIPE	0.010%	568.30 TO 568.30
C	23'	18" DIA. ROUND, CL IV	0.600%	568.54 TO 568.68
D	36'	54" DIA. EQIV. ELLIPTICAL, CL I	0.126%	569.26 TO 569.31

RUNWAY 5 AREA

NOTE:
 SEE SHEET 20 FOR GENERAL DRAINAGE NOTES.