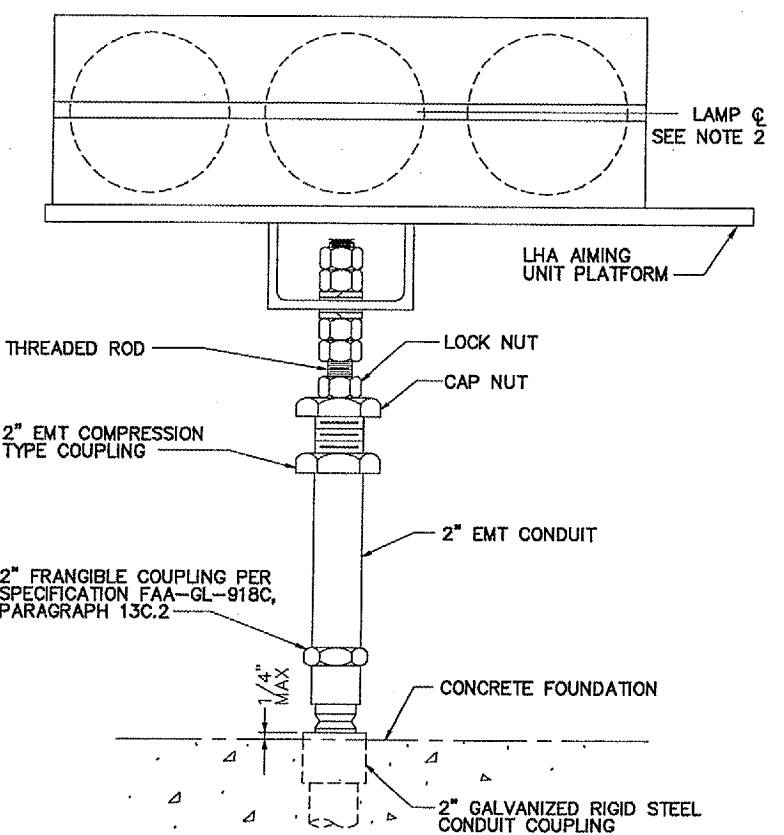
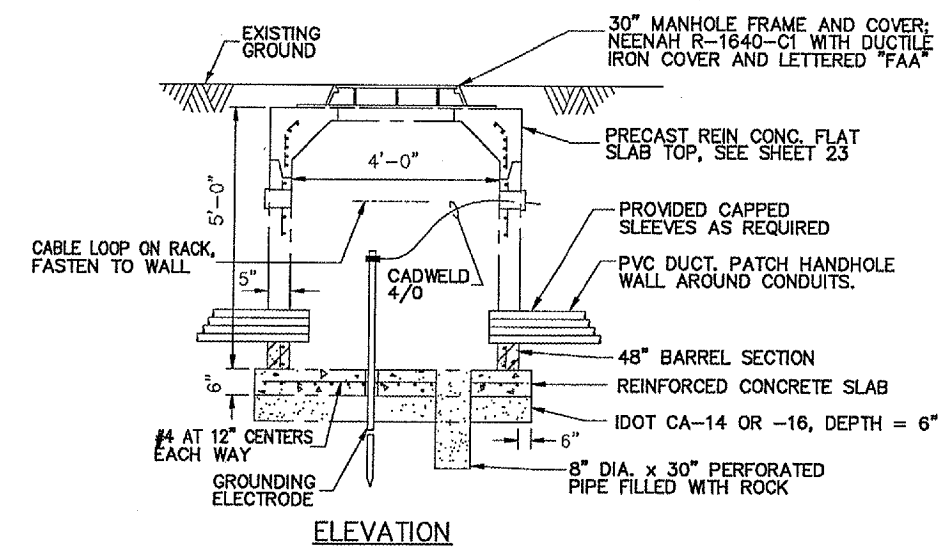


PLAN VIEW

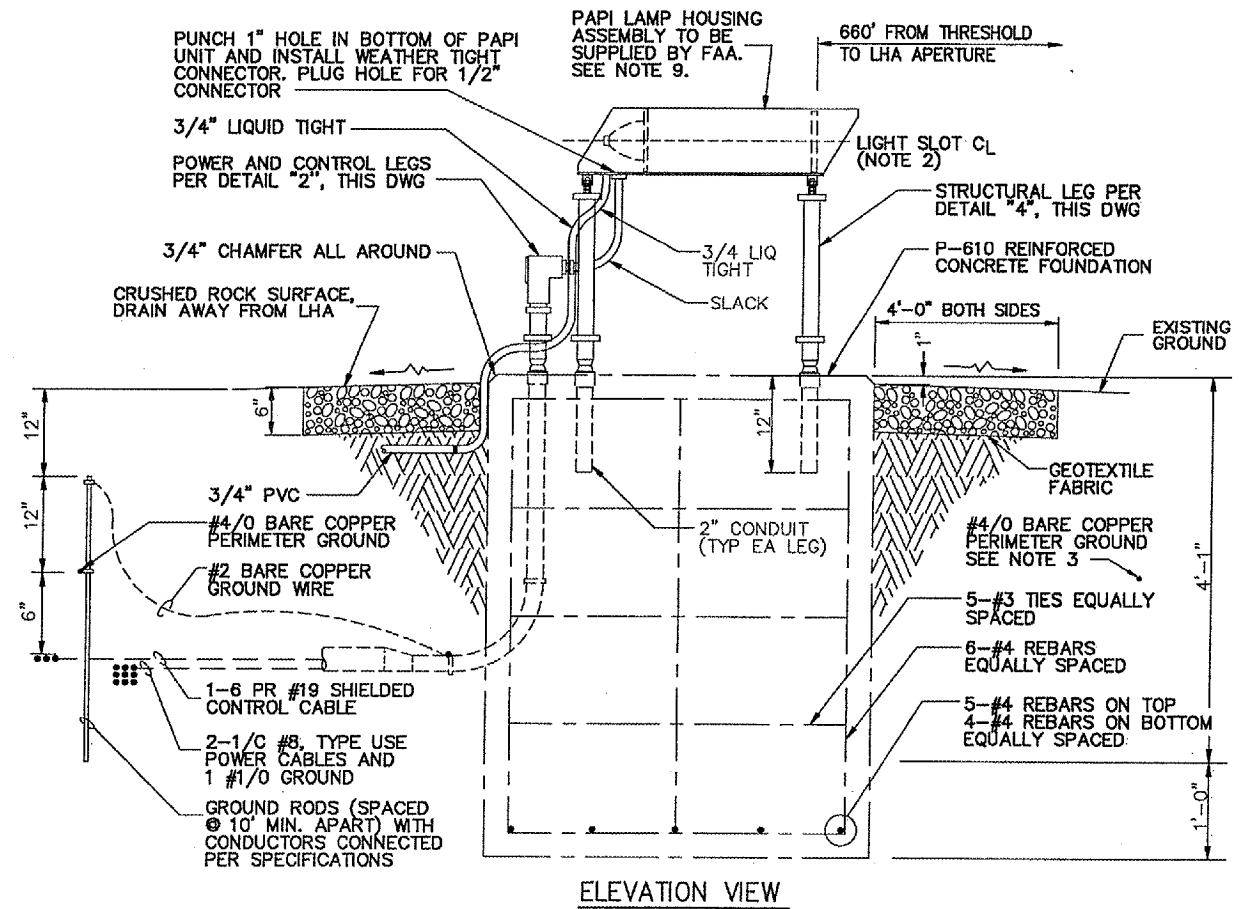
THE FAA SUPPLIED PAPI LHA UNITS SHALL BE BEDFORD PANORAMIC TYPE AS MANUFACTURED BY GODFREY.



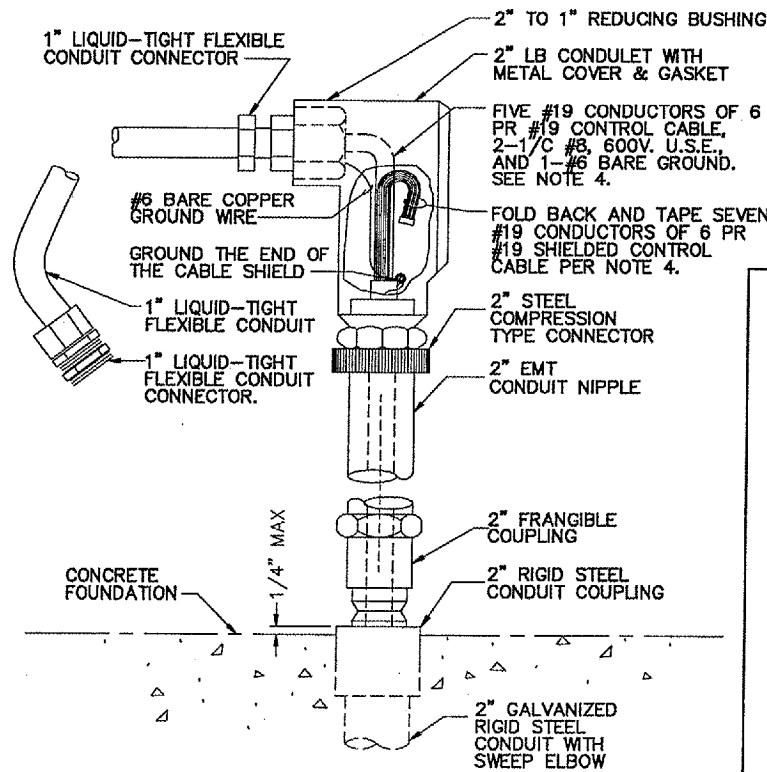
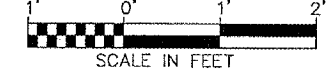
4 LAMP HOUSING ASSEMBLY STRUCTURAL LEG  
 (THREE PER LHA, TYPICAL OF ONE LEG)  
 SCALE: NONE



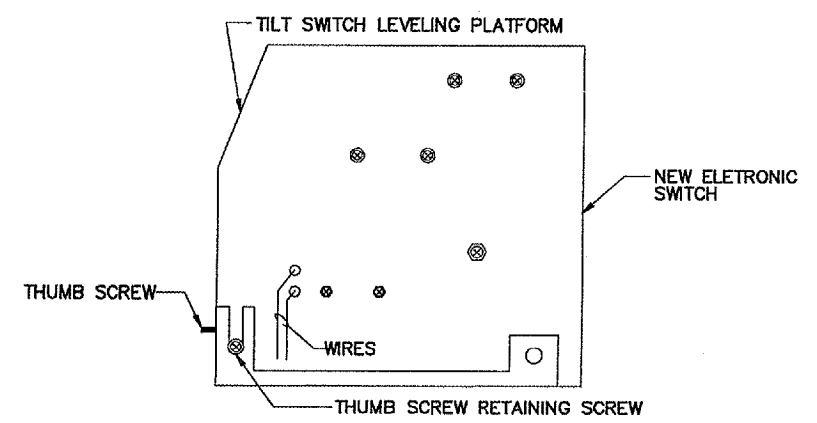
6 ELECTRICAL HANDHOLE  
 SCALE: NONE



1 PAPI LAMP HOUSING ASSEMBLY (LHA)



2 POWER & CONTROL LEG  
 SCALE: NONE



3 TILT SWITCH DETAILS  
 SCALE: NONE

GENERAL NOTES:

1. INSTALLATION SHALL CONFORM TO THE APPLICABLE SECTIONS OF THE NATIONAL ELECTRICAL CODES AND LOCAL CODES.
2. FOR LAMP HOUSING ASSEMBLY LAMP CENTERLINE ELEVATION AND AIMING ANGLE, SEE TABLE "A", SHEET 37. THE LAMP HOUSING UNITS ARE INSTALLED SUCH THAT THE BEAM CENTERS OF ALL THE UNITS ARE WITHIN 1 INCH (+/-) OF ELEVATION FROM UNIT TO UNIT.
3. THE #4/0 AWG BARE COPPER PERIMETER GROUND (INSTALL IN A CLOSED LOOP) SHALL ENCOMPASS ALL FOUR LAMP HOUSING ASSEMBLIES. GROUNDING RODS SHALL BE INSTALLED AT THE FOUR CORNERS. THE #2 BURIED GUARD WIRE SHALL BE CAD WELDED WITH THE #4/0 TO A GROUND ROD. SEE SYSTEM WIRING DIAGRAM, SHEET 40.
4. INSULATION AND SHIELD SHALL BE REMOVED FROM A LENGTH OF 6 PR #19 SH CONTROL CABLE SUFFICIENT TO PERMIT 5 CONDUCTORS TO REACH THEIR TERMINATIONS IN THE PAPI LAMP HOUSING UNIT WITHOUT STRAIN. INSIDE THE CONDULET, THE END OF THE CABLE SHIELD SHALL BE GROUNDED TO THE #6 BARE COPPER GROUND WIRE AND FOLDED BACK WITHOUT CUTTING. THE ENDS OF THE UNUSED SEVEN #19 CONDUCTORS TAPED.
5. ALL OF THE RIGID CONDUIT CONNECTORS SHALL BE MADE WITH WATER TIGHT HUBS OR SEALING LOCK NUTS.
6. SEE SHEET 40 FOR PAPI SYSTEM SCHEMATIC WIRING DIAGRAM.
7. CONTRACTOR SHALL FIELD VERIFY ALL DIMENSIONS. CONTRACTOR SHALL VERIFY AND ADJUST LEG SPACING & LENGTHS AS NECESSARY TO INSTALL FAA SUPPLIED EQUIPMENT AS SHOWN.
8. 2" E.M.T. - LENGTH AS REQUIRED TO HOLD PAPI APERTURE SLOT AS REQUIRED. ELEVATION OF SLOT SHALL BE LEVEL AND ONE (1') FOOT ABOVE THE ELEVATION OF THE RUNWAY CROWN AS INDICATED ON SHEET 37.
9. THE FAA SHALL SUPPLY TO THE CONTRACTOR FOUR LHA UNITS. THE CONTRACTOR SHALL INSTALL THE FOUR FAA SUPPLIED LHA UNITS. THE CONTRACTOR SHALL SUPPLY AND INSTALL ALL OTHER NECESSARY ELECTRICAL EQUIPMENT AND CABLES, AS DETAILED, TO PRODUCE A COMPLETE AND OPERATIONAL SYSTEM. THE CONTRACTOR SHALL RUN ALL CABLES INTO THE LHA UNITS AND LEAVE 3' OF SLACK WITHOUT MAKING FINAL CONNECTIONS. THE FAA SHALL MAKE THE FINAL CONNECTIONS IN THE LHA UNITS.
10. THE COST OF THESE ITEMS SHALL BE INCLUDED IN CONTRACT ITEM AR801622.

3:\airport\A06T025 RS EXTN, P\MT\PAP1.DWG, 5/18/2007 11:18:33 PM, affm