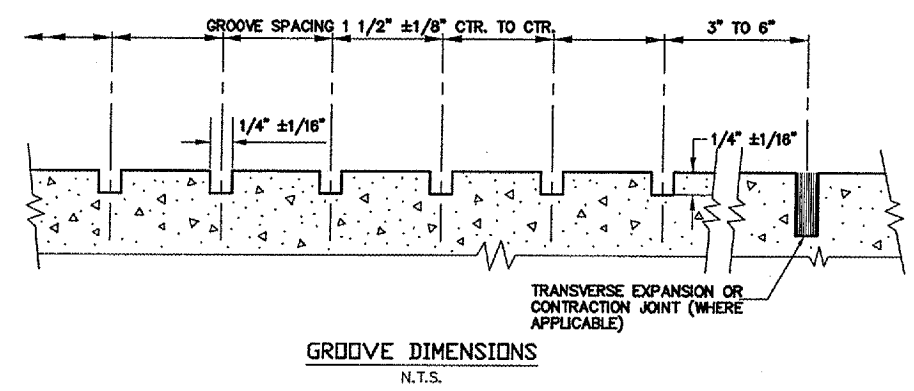


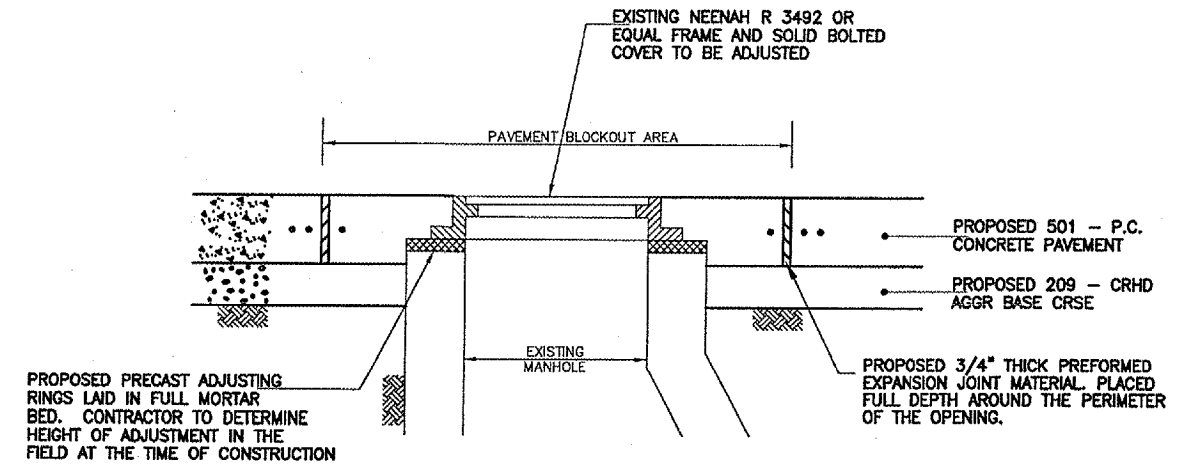
GROOVING PLAN



GROOVE DIMENSIONS
 N.T.S.

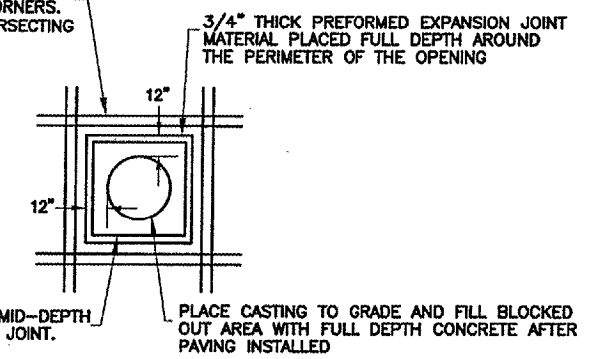
NOTES:

1. GROOVING EXTENDS OUTWARD 65' FROM C OF RUNWAY UNLESS OTHERWISE NOTED.
2. SUCCESSIVE PASSES OF THE GROOVING MACHINE SHALL NOT OVERLAP.
3. CONTRACTOR SHALL NOT ALLOW ACCUMULATION OF CUTTINGS IN TURFED AREAS. THE GROOVING MACHINE SHALL BE EQUIPPED WITH AUTOMATIC CUTTING PICK-UP FEATURES TO PREVENT ACCUMULATION OF CUTTINGS IN THE TURFED AREAS.
4. GROOVING SHALL BE COMPLETED PRIOR TO THE INSTALLATION OF NEOPRENE COMPRESSION SEALS IN THE LONGITUDINAL JOINTS.
5. CONTRACTOR SHALL REPLACE AND / OR RE-SEAL ALL EXISTING JOINTS THAT ARE DAMAGED BY THE PAVEMENT GROOVING OPERATIONS. COSTS TO BE INCLUDED IN THE CONTRACT UNIT PRICE FOR PAVEMENT.



TYPICAL DETAIL - MANHOLE
 ADJUSTMENT IN P.C.C. PAVEMENT
 NO SCALE

2 - #6 REBARS (8 TOTAL) PLACED AT MID-DEPTH OF PAVEMENT 3" FROM EXPANSION JOINT ON 6" C TO C. EXTEND BARS 2'-0" BEYOND EXPANSION CORNERS. DISCONTINUE BARS 3" EITHER SIDE OF INTERSECTING EXPANSION JOINTS.



#6 REBARS (4 TOTAL) PLACED AT MID-DEPTH OF PAVEMENT 3" FROM EXPANSION JOINT.

3/4" THICK PREFORMED EXPANSION JOINT MATERIAL PLACED FULL DEPTH AROUND THE PERIMETER OF THE OPENING

PAVEMENT SQUARE BLOCKOUT
 FOR CIRCULAR CASTING
 NO SCALE