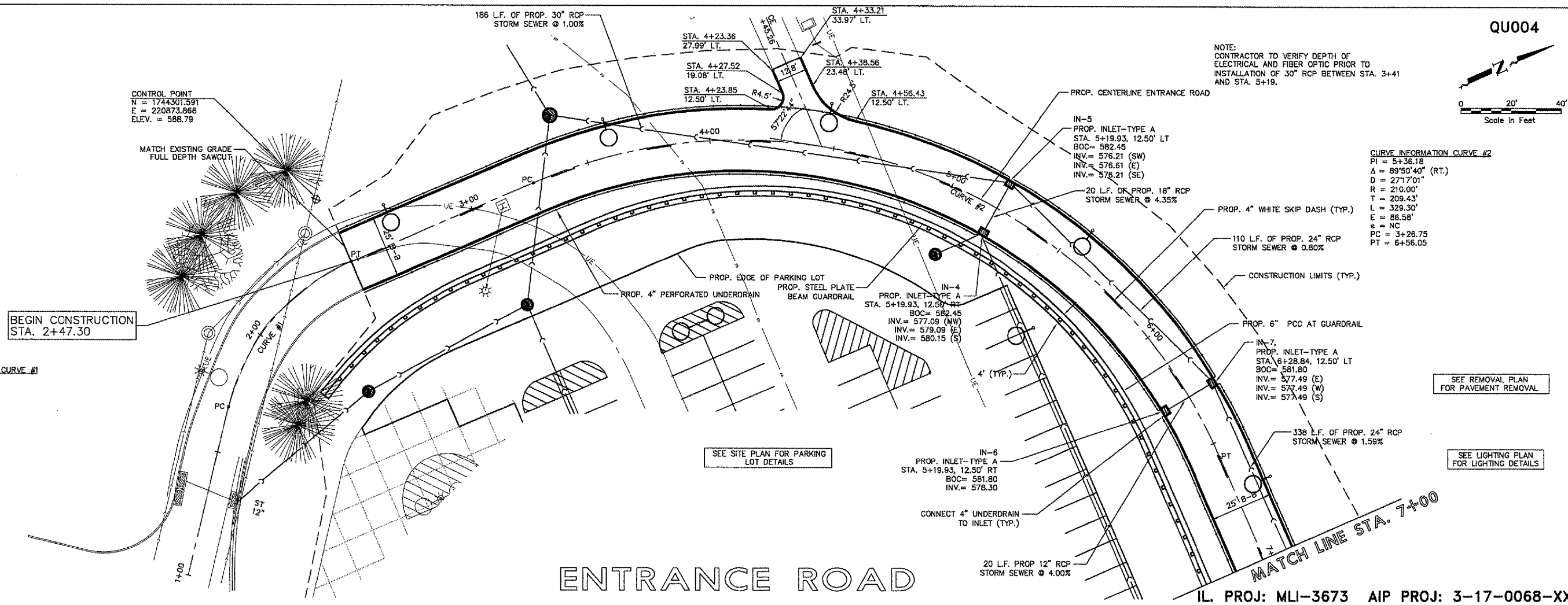


NOTE:
CONTRACTOR TO VERIFY DEPTH OF
ELECTRICAL AND FIBER OPTIC PRIOR TO
INSTALLATION OF 30" RCP BETWEEN STA. 3+41
AND STA. 5+19.

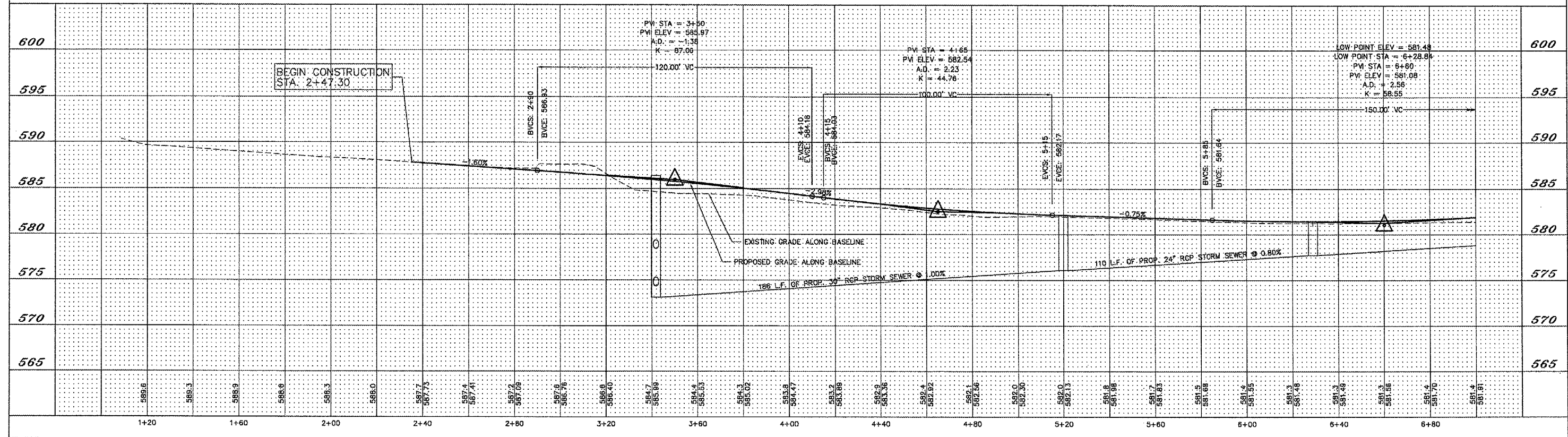


CURVE INFORMATION CURVE #1
PI = 2+10.97
Δ = 53°08'54" (RT.)
D = 67°24'24"
R = 85.00'
T = 42.52'
L = 78.84'
E = 10.04'
e = 2.50%
SE RUN = 37.00'
TR = 28.00'
PC = 1+68.45
PT = 2+47.30

CURVE INFORMATION CURVE #2
PI = 5+36.18
Δ = 89°50'40" (RT.)
D = 27°17'01"
R = 210.00'
T = 209.43'
L = 329.30'
E = 86.58'
e = NC
PC = 3+26.75
PT = 6+56.05

ENTRANCE ROAD

IL PROJ: MLI-3673 AIP PROJ: 3-17-0068-XX



QUAD CITY INTERNATIONAL AIRPORT
Moline, IL



REVISIONS		
NO.	ITEM	DATE

PLOTTING SCALE: 1" = 20'
DRAWN BY: BLH/ADJ
CHECKED BY: SAS
DATE: APRIL 2007

McClure
Engineering Associates, Inc.
4700 Kennedy Drive East Moline, Illinois 61244
(309) 792-3390 Fax (309) 792-8274
Design Firm License: Illinois 184-000816
Copyright 2007 By McClure Engineering Associates, Inc.

PLAN & PROFILE-STA. 1+00-STA. 7+00
ENTRANCE ROAD RELOCATION AND PARKING LOT EXPANSION
MOLINE, ILLINOIS
FILE NAME: F:\M0107.001\DWG\07001.mdi.dwg
JOB NUMBER: 01-28-07-001

SHEET NO.
11
OF 41