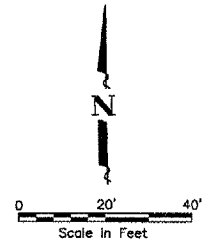
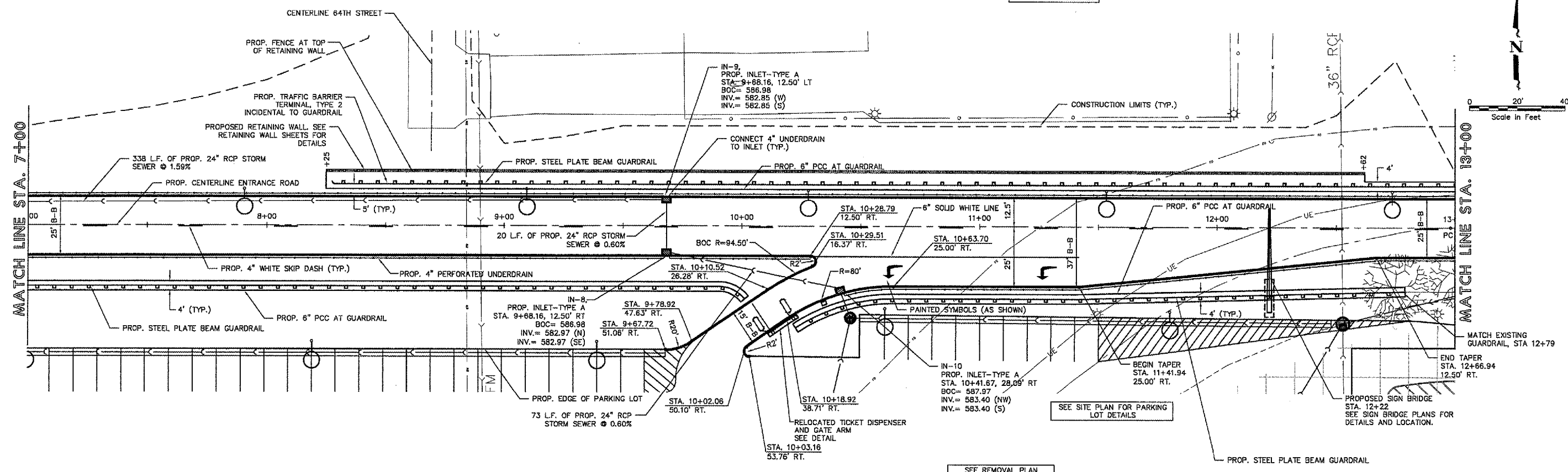


SEE 64TH STREET PLAN SHEET FOR DETAILS

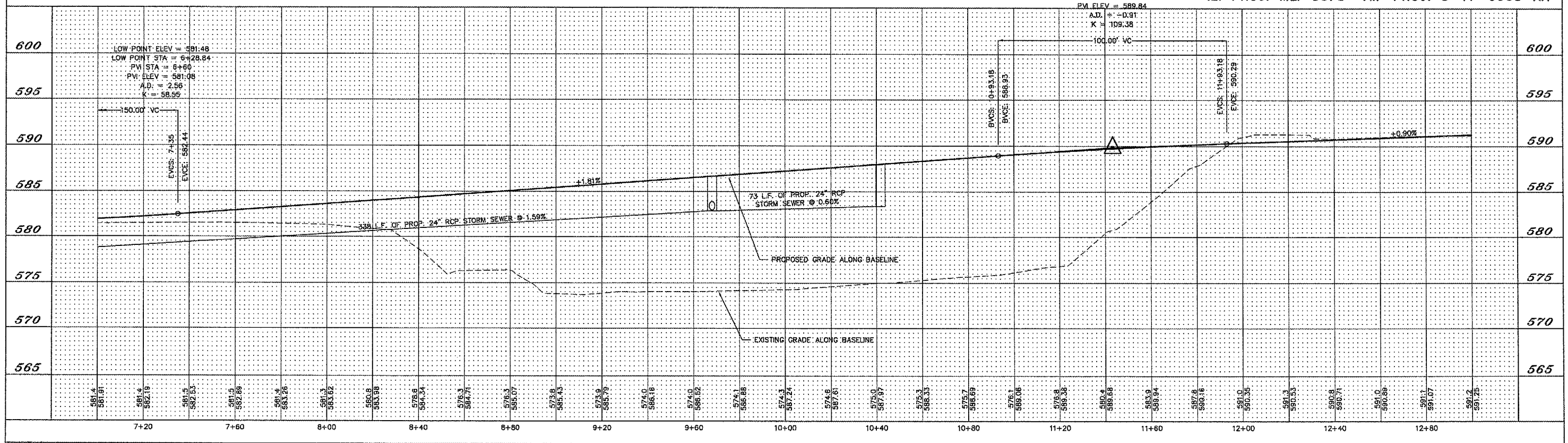
SEE LIGHTING PLAN FOR LIGHTING DETAILS

QU004



ENTRANCE ROAD

IL. PROJ: MLI-3673 AIP PROJ: 3-17-0068-XX



QUAD CITY INTERNATIONAL AIRPORT
Moline, IL



REVISIONS		
NO.	ITEM	DATE

PLOTTING SCALE: 1" = 20'
DRAWN BY: BLH/ADU
CHECKED BY: SAS
DATE: APRIL 2007

McClure
Engineering Associates, Inc.
4700 Kennedy Drive
(309) 782-9300
East Moline, Illinois 61244
Fax (309) 782-8974
Design Firm License: Illinois 184-002818
Copyright 2007 By McClure Engineering Associates, Inc.

PLAN & PROFILE-STA. 7+00-STA. 13+00
ENTRANCE ROAD RELOCATION AND PARKING LOT EXPANSION
MOLINE, ILLINOIS
FILE NAME: T:\M0107.001\DWG\07001mal.dwg
JOB NUMBER: 01-29-07-001

SHEET NO.
12
OF 41