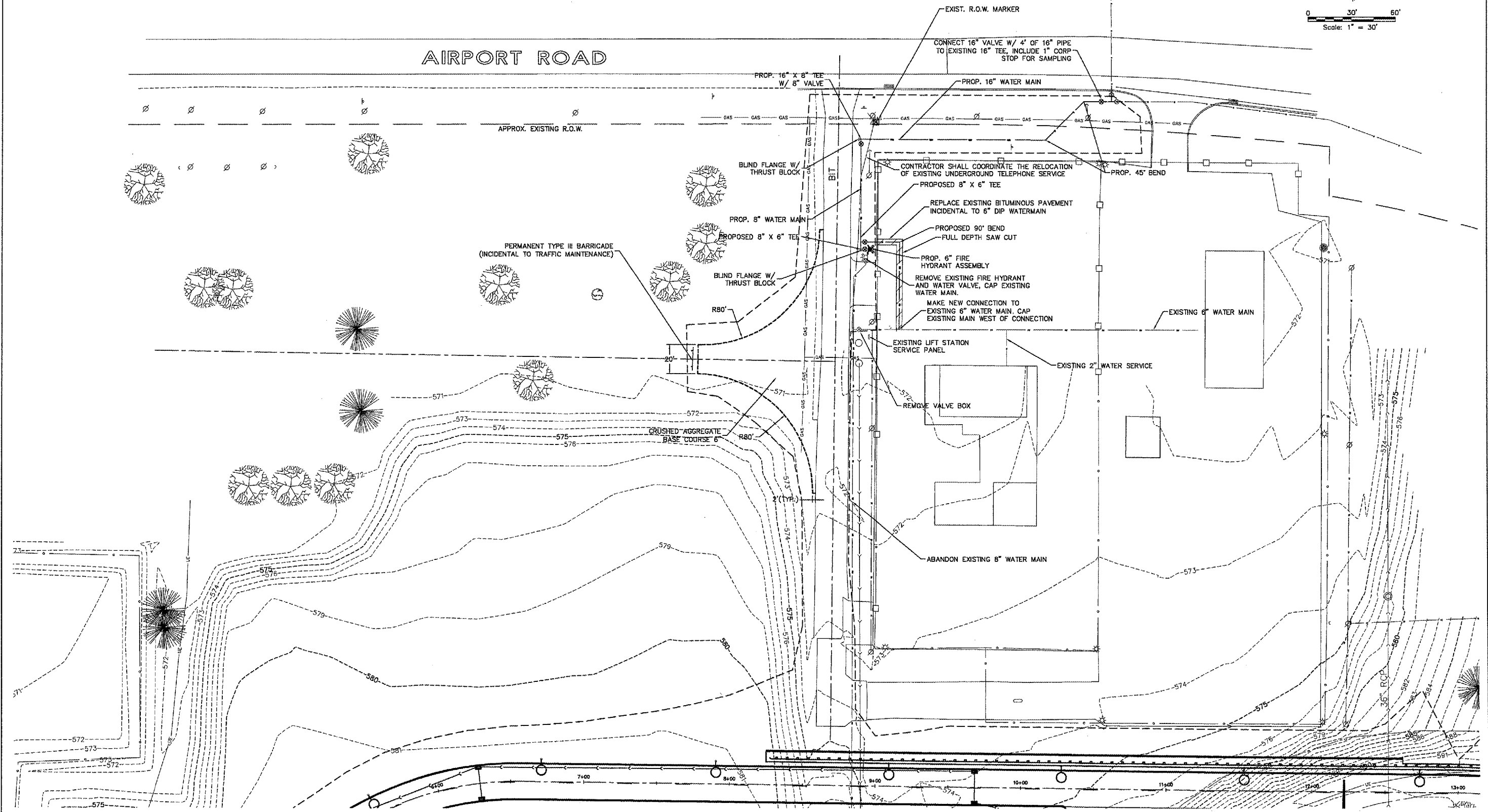


AIRPORT ROAD



IL. PROJ: MLI-3673 AIP PROJ: 3-17-0068-XX

QUAD CITY INTERNATIONAL AIRPORT
Moline, IL



REVISIONS		
NO.	ITEM	DATE

PLOTTING SCALE: 1" = 30'

DRAWN BY: BLH

CHECKED BY: SAS

DATE: APRIL 2007

McClure
Engineering Associates, Inc.

4700 Kennedy Drive East Moline, Illinois 61244
(309) 792-9550 Fax (309) 792-0374

Design Firm License: Illinois 184-000816
Copyright 2007 By McClure Engineering Associates, Inc.

PLAN SHEET - 64TH STREET

ENTRANCE ROAD RELOCATION AND PARKING LOT EXPANSION

MOLINE, ILLINOIS

FILE NAME: T:\MG107.001\DWG\07001md.dwg

JOB NUMBER: 01-29-07-001

SHEET NO.
15
OF 41