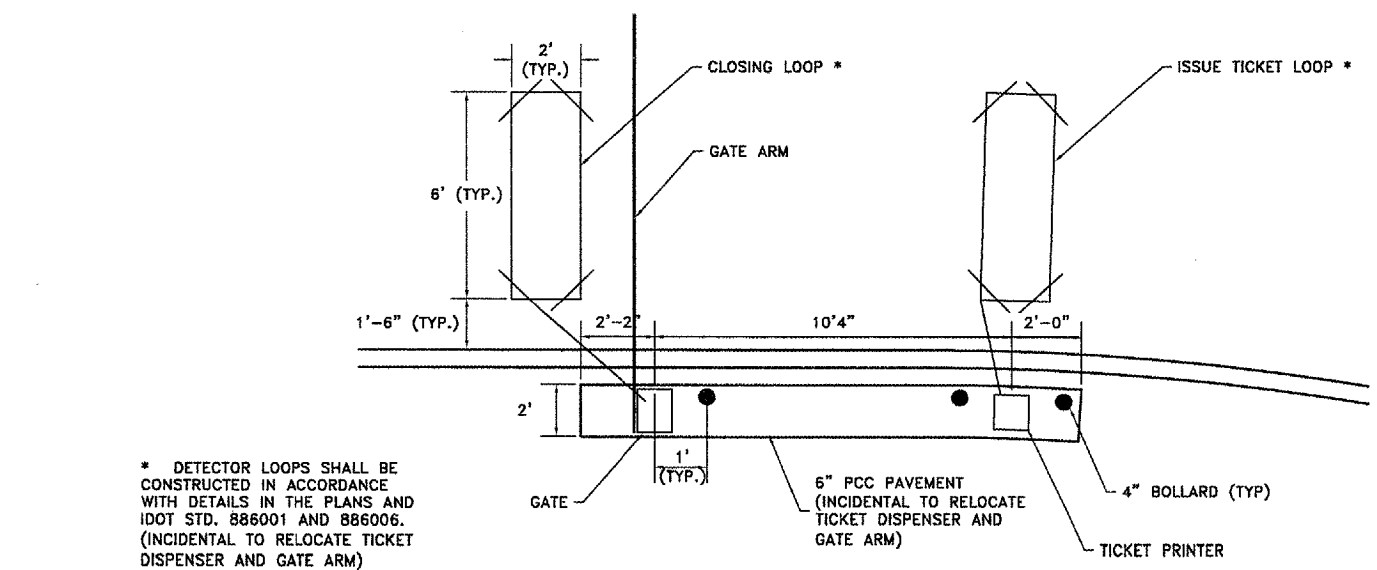
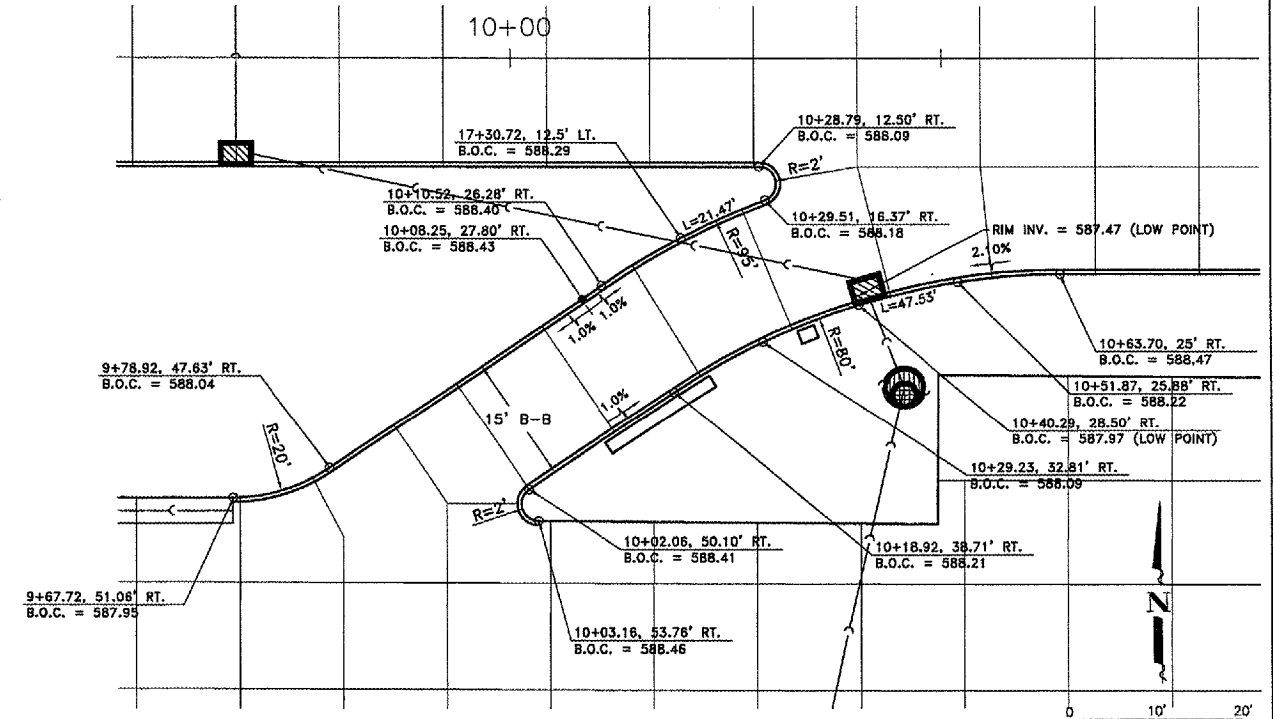


DETAIL - ENTRANCE ROAD & OLD ENTRANCE ROAD INTERSECTION



DETAIL - RELOCATE TICKET DISPENSER AND GATE ARM



DETAIL - PARKING LOT ENTRANCE

IL. PROJ: MLI-3673 AIP PROJ: 3-17-0068-XX

QUAD CITY INTERNATIONAL AIRPORT
Moline, IL



REVISIONS		
NO.	ITEM	DATE

PLOTTING SCALE: 1" = 10'
DRAWN BY: BLH
CHECKED BY: SAS
DATE: APRIL 2007

McClure
Engineering Associates, Inc.
4700 Kennedy Drive
(309) 792-3359
Design Firm License: Illinois 184-000818
Copyright 2007 By McClure Engineering Associates, Inc.

INTERSECTION DETAILS
ENTRANCE ROAD RELOCATION
AND PARKING LOT EXPANSION
MOLINE, ILLINOIS
FILE NAME: T:\0107.001\DWG\0700INT.DWG
JOB NUMBER: 01-29-07-001