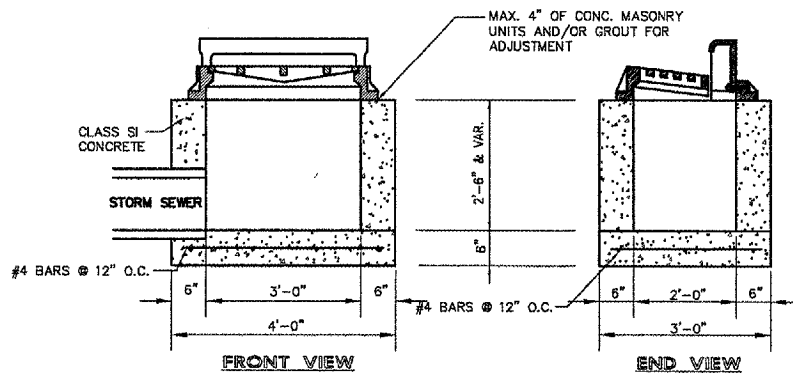
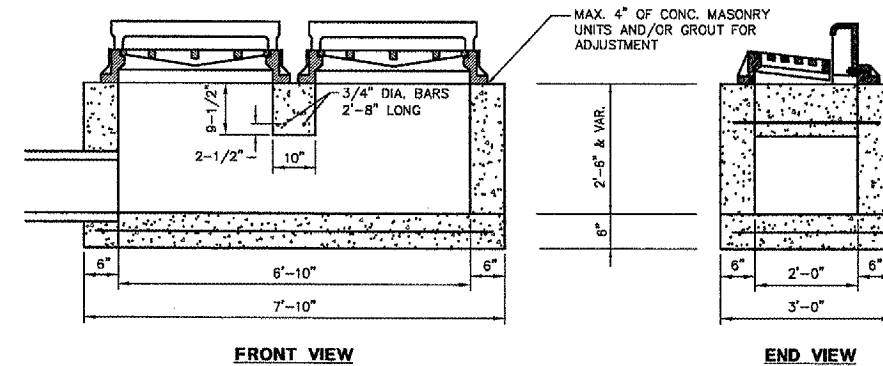


BOX-OUT DETAIL
NOT TO SCALE



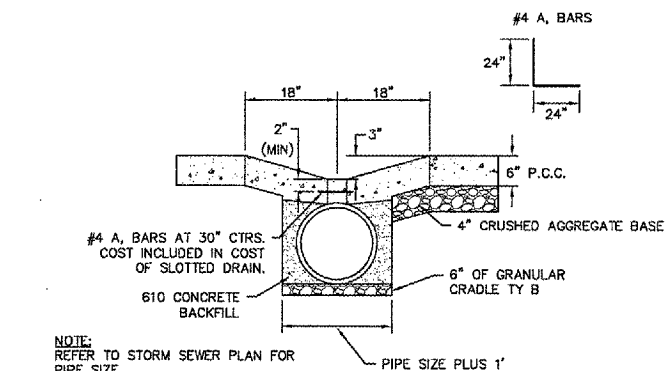
INLET - TYPE A
NOT TO SCALE



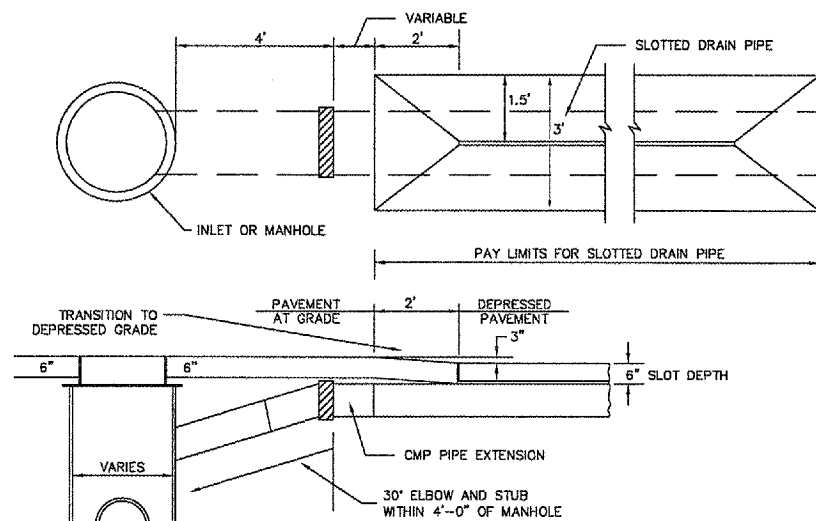
INLET - TYPE B
NOT TO SCALE

- NOTES:**
- 1.) INLET BOXES ARE TO BE USED WITH NEENAH #R-3067 OR APPROVED EQUAL INLET FRAME, CURB BOX AND TYPE DL/DR GRATE.
 - 2.) INLET BOXES MAY BE PRECAST OR CAST IN PLACE CONCRETE.

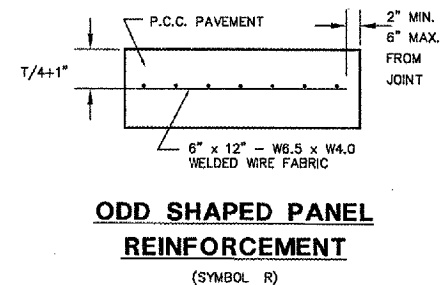
- NOTES:**
- 1.) INLET BOXES ARE TO BE USED WITH NEENAH #R-3067 OR APPROVED EQUAL INLET FRAME, CURB BOX AND TYPE DL/DR GRATE.
 - 2.) INLET BOXES MAY BE PRECAST OR CAST IN PLACE CONCRETE.



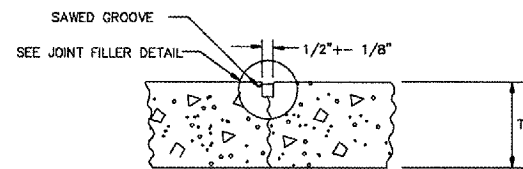
TYPICAL SLOTTED DRAIN INSTALLATION DETAIL
NOT TO SCALE



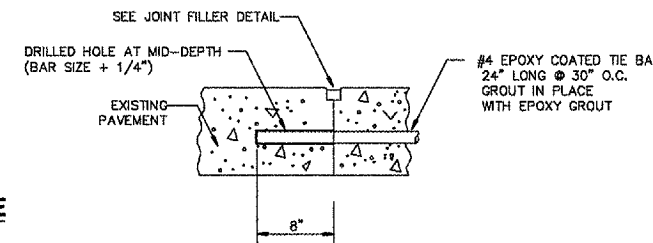
TYPICAL DRAIN PIPE CONNECTION TO STRUCTURE
NOT TO SCALE



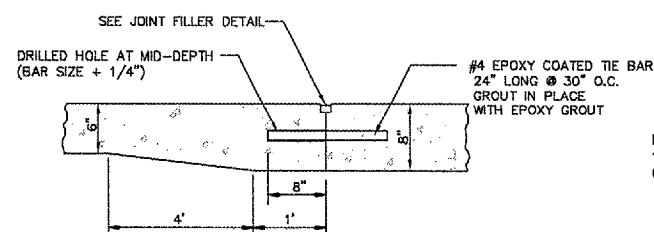
ODD SHAPED PANEL REINFORCEMENT
(SYMBOL R)



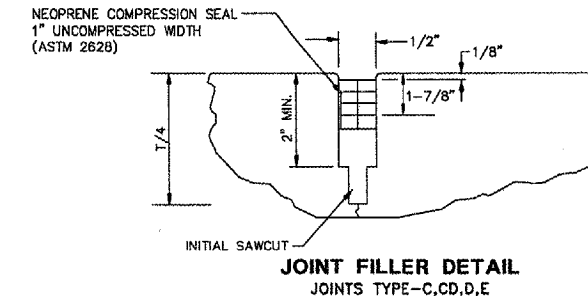
JOINT TYPE-C (DUMMY) TRANSVERSE
NOT TO SCALE



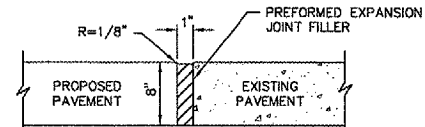
JOINT TYPE-D
GROUTED IN-PLACE TIE BAR
ADJACENT TO EXISTING PAVEMENT



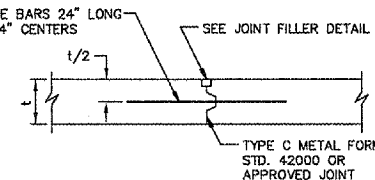
TRANSITION PAVEMENT JOINT
NOT TO SCALE



JOINT FILLER DETAIL
JOINTS TYPE-C, CD, D, E

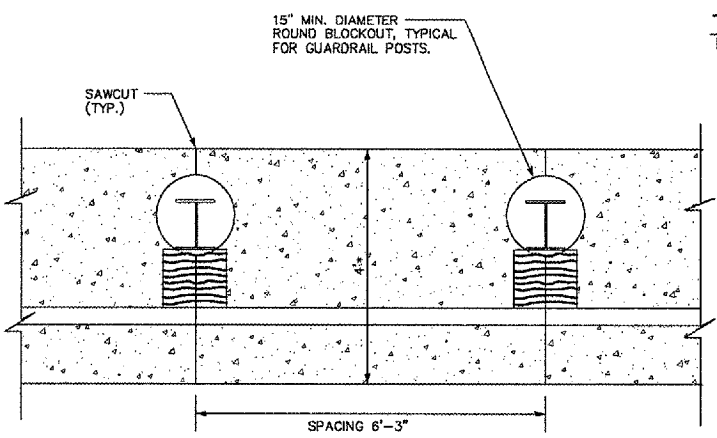


TYPE-A
EXPANSION JOINT



JOINT TYPE-E
LONGITUDINAL METAL

- GENERAL NOTES (JOINTS):**
- 1.) ALL TRANSVERSE JOINTS MUST EXTEND THROUGH CURBS AND BE CONTINUOUS ACROSS PAVEMENT, EXCEPT TIED TRANSVERSE CONSTRUCTION JOINTS.
 - 2.) JOINTS SHALL BE SAWS TO A DEPTH OF T/4 FOR TRANSVERSE JOINTS AND T/3 FOR LONGITUDINAL JOINTS. UNLESS OTHERWISE NOTED, SAW JOINTS SHALL BE SEALED WITH PREFORMED POLYCHLOROPRENE ELASTOMERIC JOINT SEAL.



6" PCC AT GUARDRAIL
NOT TO SCALE

- NOTE:**
- * AT LOCATIONS WHERE GUARDRAIL IS ADJACENT TO THE PROPOSED RETAINING WALL THE WIDTH WILL NOT BE 4' BUT THE 6" PCC AT GUARDRAIL SHALL EXTEND TO THE TOP OF THE RETAINING WALL.
 - NOTE: COST OF 6" PCC AT GUARDRAIL SHALL BE INCLUDED IN THE COST OF GUARDRAIL AND REMOVE AND REERECT STEEL PLATE BEAM GUARDRAIL.

REVISIONS		
NO.	ITEM	DATE

PLOTTING SCALE:	1" = 1"
DRAWN BY:	BLM
CHECKED BY:	SAS
DATE:	APRIL 2007

McClure
Engineering Associates, Inc.
4700 Kennedy Drive East Moline, Illinois 61244
(309) 792-9350 Fax (309) 792-9374
Design Firm License: Illinois 104-000818
Copyright 2007 by McClure Engineering Associates, Inc.

CONSTRUCTION DETAILS
ENTRANCE ROAD RELOCATION AND PARKING LOT EXPANSION
MOLINE, ILLINOIS
FILE NAME: F:\0107.001\DWG\07001CD.DWG
JOB NUMBER: 01-29-07-001