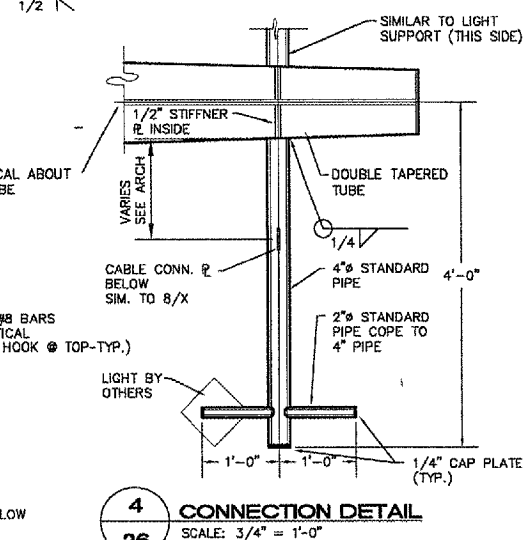
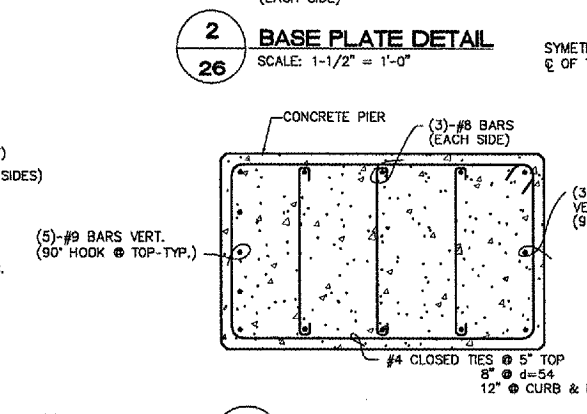
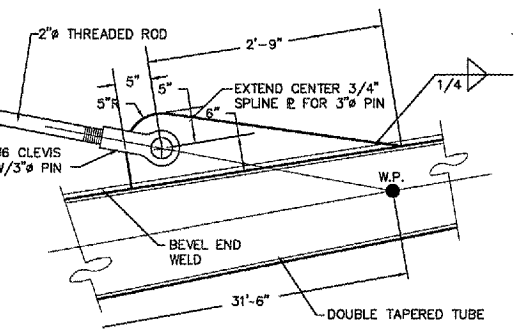
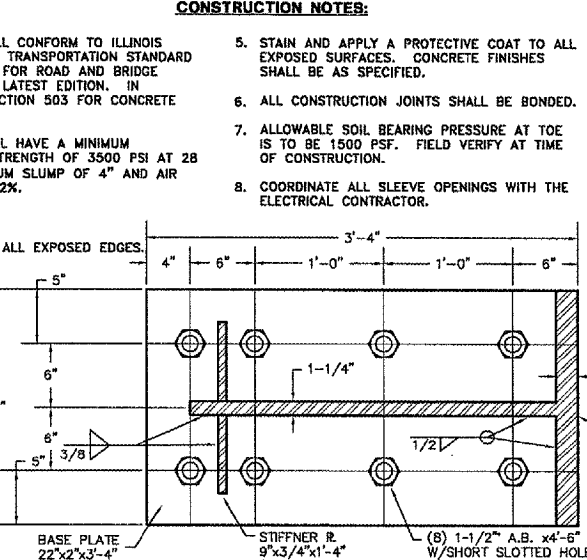
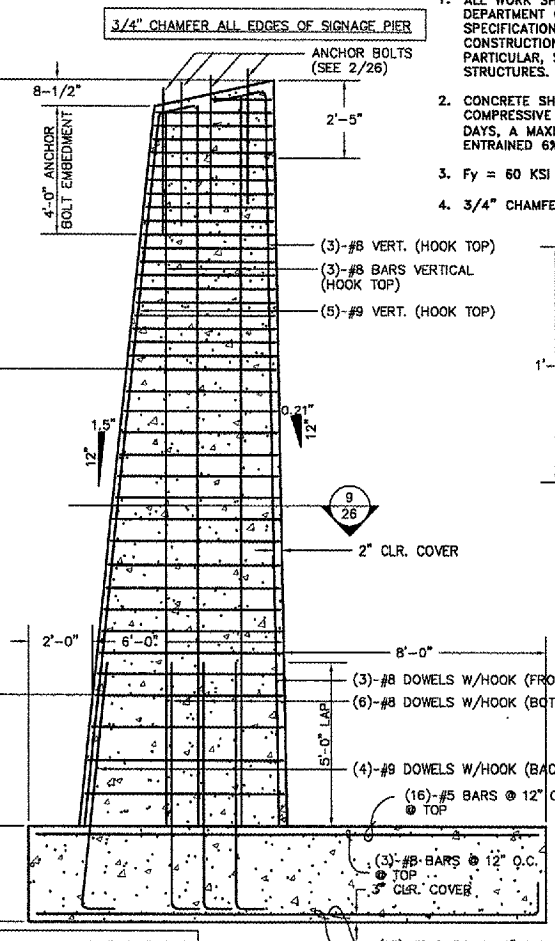
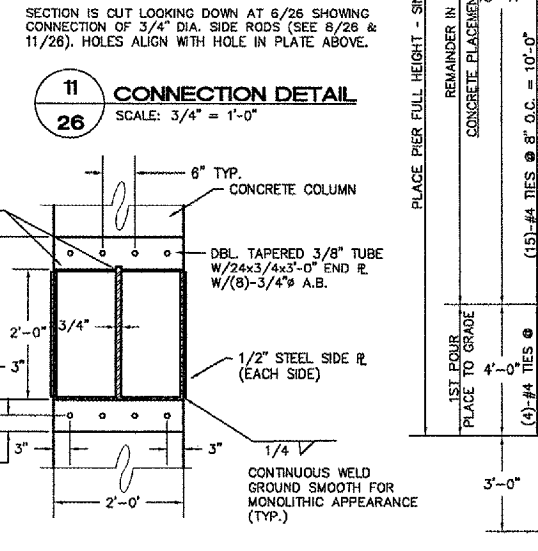
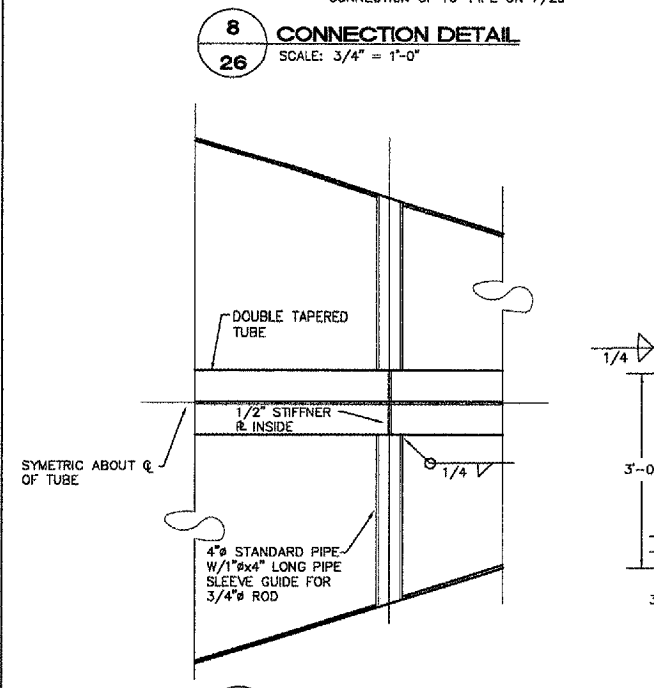
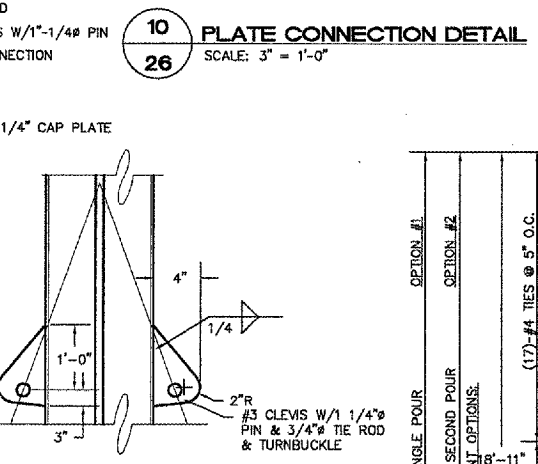
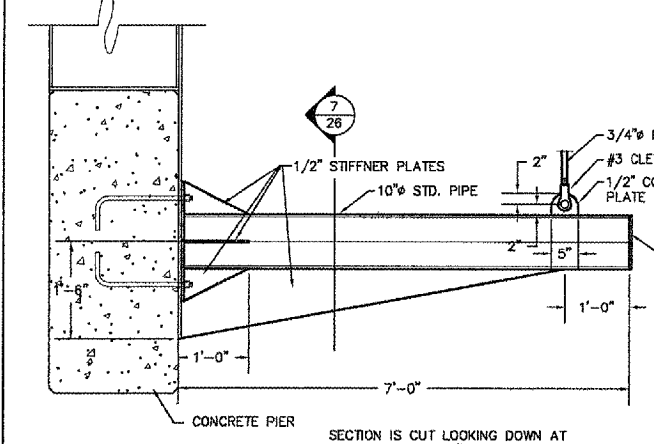
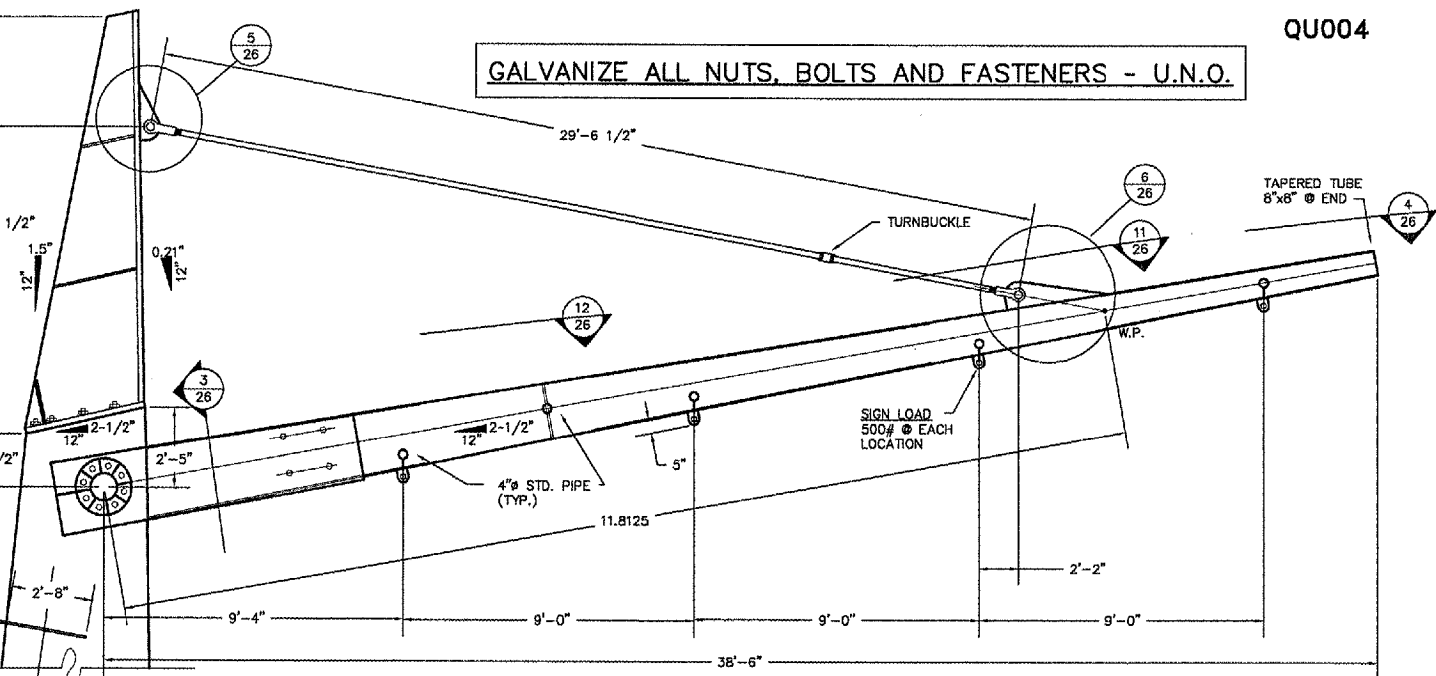
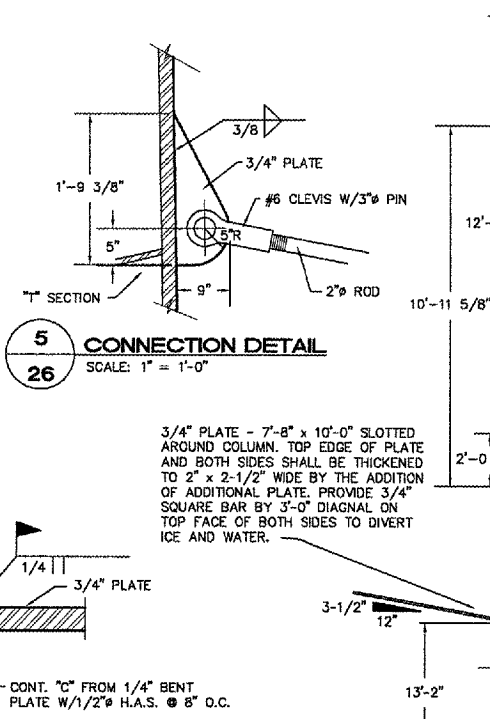
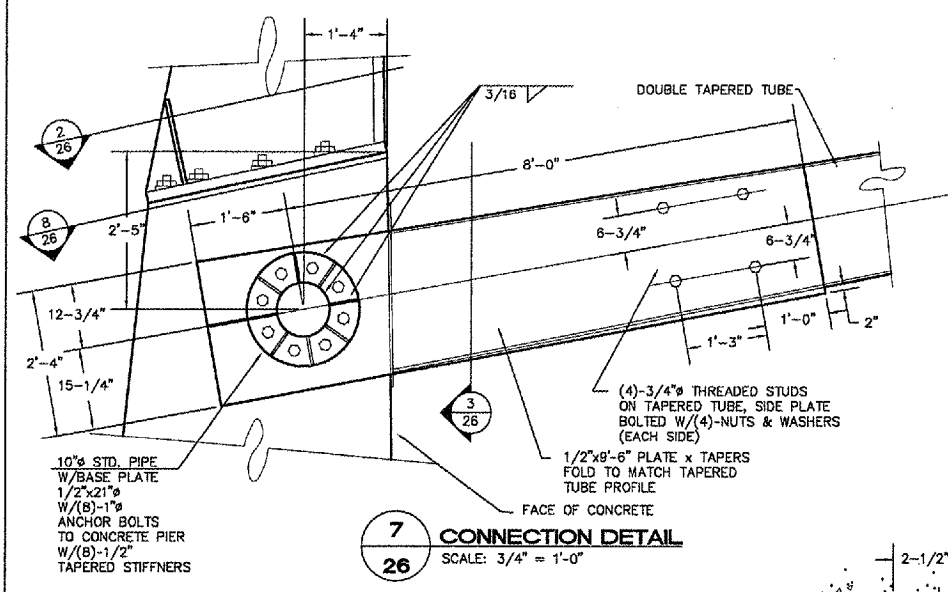


GALVANIZE ALL NUTS, BOLTS AND FASTENERS - U.N.O.



GENERAL NOTES:

- DETAILS 1 AND 9 ARE FOR CONSTRUCTION OF THE NEW FOUNDATION FOR THE SIGN RELOCATION.
- DETAILS 1A THROUGH 8 AND 10 THROUGH 12 ARE FOR CONNECTION INFORMATION FOR THE SIGN RELOCATION. REUSE EXISTING MATERIALS WHERE POSSIBLE.

CONSTRUCTION NOTES:

- ALL WORK SHALL CONFORM TO ILLINOIS DEPARTMENT OF TRANSPORTATION STANDARD SPECIFICATIONS FOR ROAD AND BRIDGE CONSTRUCTION, LATEST EDITION. IN PARTICULAR, SECTION 503 FOR CONCRETE STRUCTURES.
- CONCRETE SHALL HAVE A MINIMUM COMPRESSIVE STRENGTH OF 3500 PSI AT 28 DAYS. A MAXIMUM SLUMP OF 4" AND AIR ENTRAINMENT 6%±2X.
- F_y = 60 KSI
- 3/4" CHAMFER ALL EXPOSED EDGES.
- STAIN AND APPLY A PROTECTIVE COAT TO ALL EXPOSED SURFACES. CONCRETE FINISHES SHALL BE AS SPECIFIED.
- ALL CONSTRUCTION JOINTS SHALL BE BONDED.
- ALLOWABLE SOIL BEARING PRESSURE AT TOE IS TO BE 1500 PSF. FIELD VERIFY AT TIME OF CONSTRUCTION.
- COORDINATE ALL SLEEVE OPENINGS WITH THE ELECTRICAL CONTRACTOR.

REVISIONS		
NO.	ITEM	DATE

DRAWN BY:	BLH
CHECKED BY:	AAC
DATE:	MARCH 2007