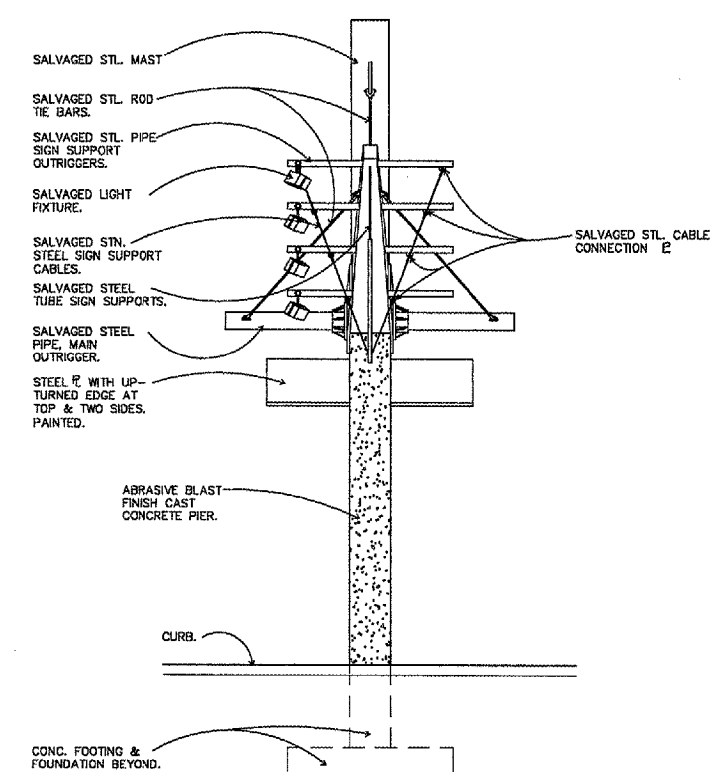
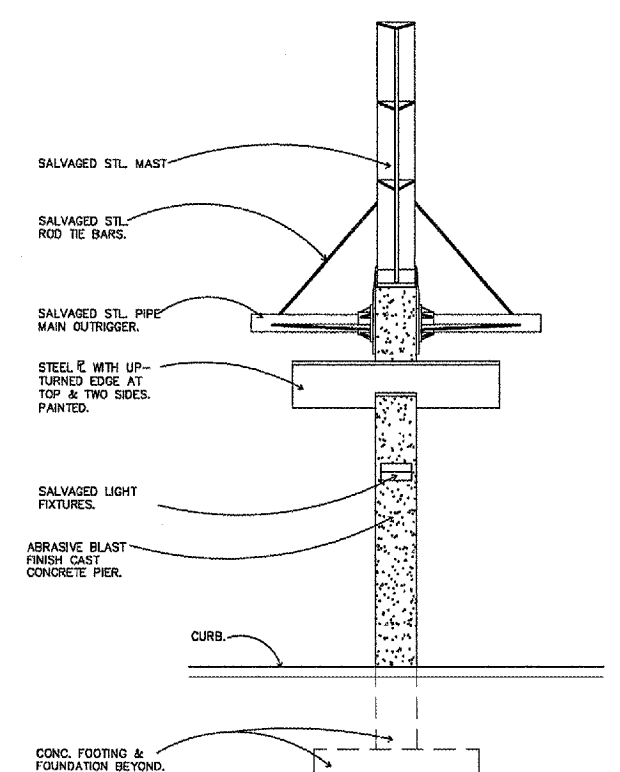


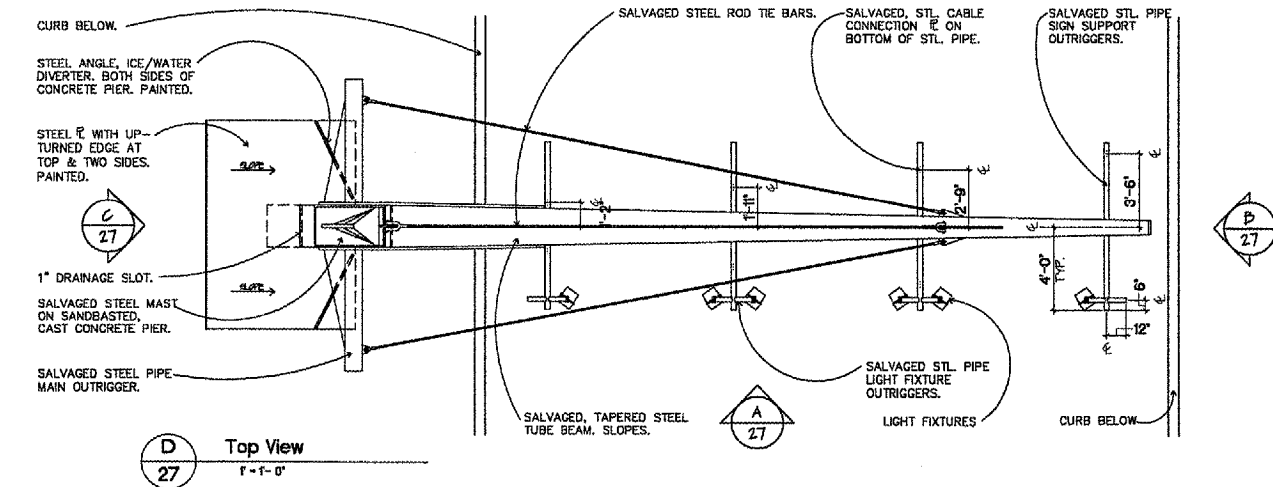
**A** Typ. Side Elevation  
1" = 1'-0"



**B** Typ. End Elevation  
1" = 1'-0"

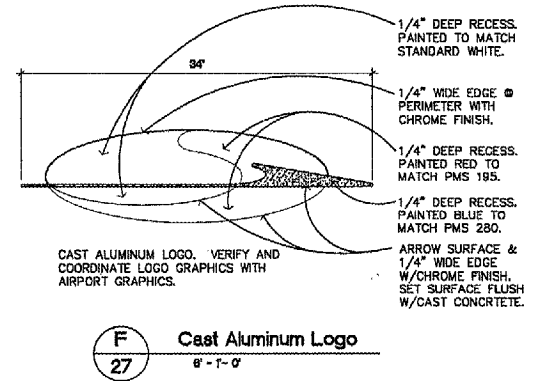


**C** Typ. End Elevation  
1" = 1'-0"

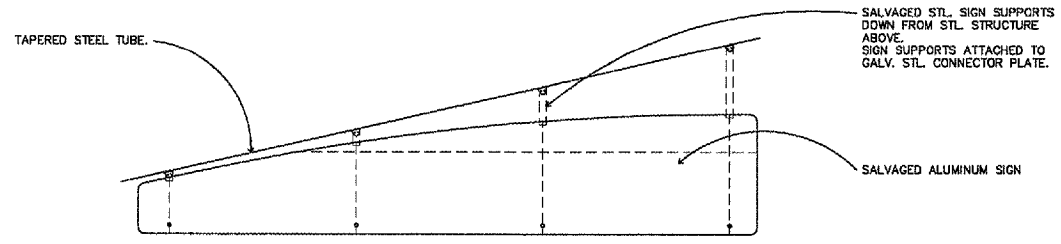


**D** Top View  
1" = 1'-0"

**GENERAL NOTES:**  
1. SEE STRUCTURAL DRAWINGS FOR DETAILING & DIMENSIONING OF STEEL & CAST CONCRETE UNLESS NOTED OTHERWISE.  
2. SALVAGED PIECES SHALL BE STRIPPED TO BARE METAL, PRIMED, AND REPAINTED TO MATCH EXISTING COLORS.



**F** Cast Aluminum Logo  
8" = 1'-0"



**E** Typ. Bridge Sign Panel  
1" = 1'-0"



REVISIONS		
NO.	ITEM	DATE

PLOTTING SCALE: 1" = 50'

DRAWN BY:	BLH
CHECKED BY:	AAG
DATE:	APRIL 2007

**McClure**  
Engineering Associates, Inc.  
4700 Kennedy Drive East Moline, Illinois 61244  
(309) 792-9360 Fax (309) 792-8974  
Design Firm License: Illinois 184-000016  
Copyright 2007 By McClure Engineering Associates, Inc.

**SIGN BRIDGE PLAN & ELEVATIONS**  
ENTRANCE ROAD RELOCATION AND PARKING LOT EXPANSION  
MOLINE, ILLINOIS  
FILE NAME: F:\M0107.001\DWG\07001SBP2.DWG  
JOB NUMBER: 01-29-07-001