

ELECTRICAL SYMBOLS

SYMBOL	DESCRIPTION
GENERAL	
	CONCEALED CONDUIT.
	EXPOSED CONDUIT.
	HOME-RUN. LETTER INDICATES PANEL, NUMBER INDICATES CIRCUIT.
	HAND HOLE.
LIGHTING	
	AREA LIGHT POLE WITH FIXTURE, AS SCHEDULED.
	AREA LIGHT POLE WITH FIXTURES, AS SCHEDULED.
	AREA LIGHT POLE WITH FIXTURE, AS SCHEDULED.
	GROUND MOUNTED FLOODLIGHT, AS SCHEDULED.

ELECTRICAL ABBREVIATIONS

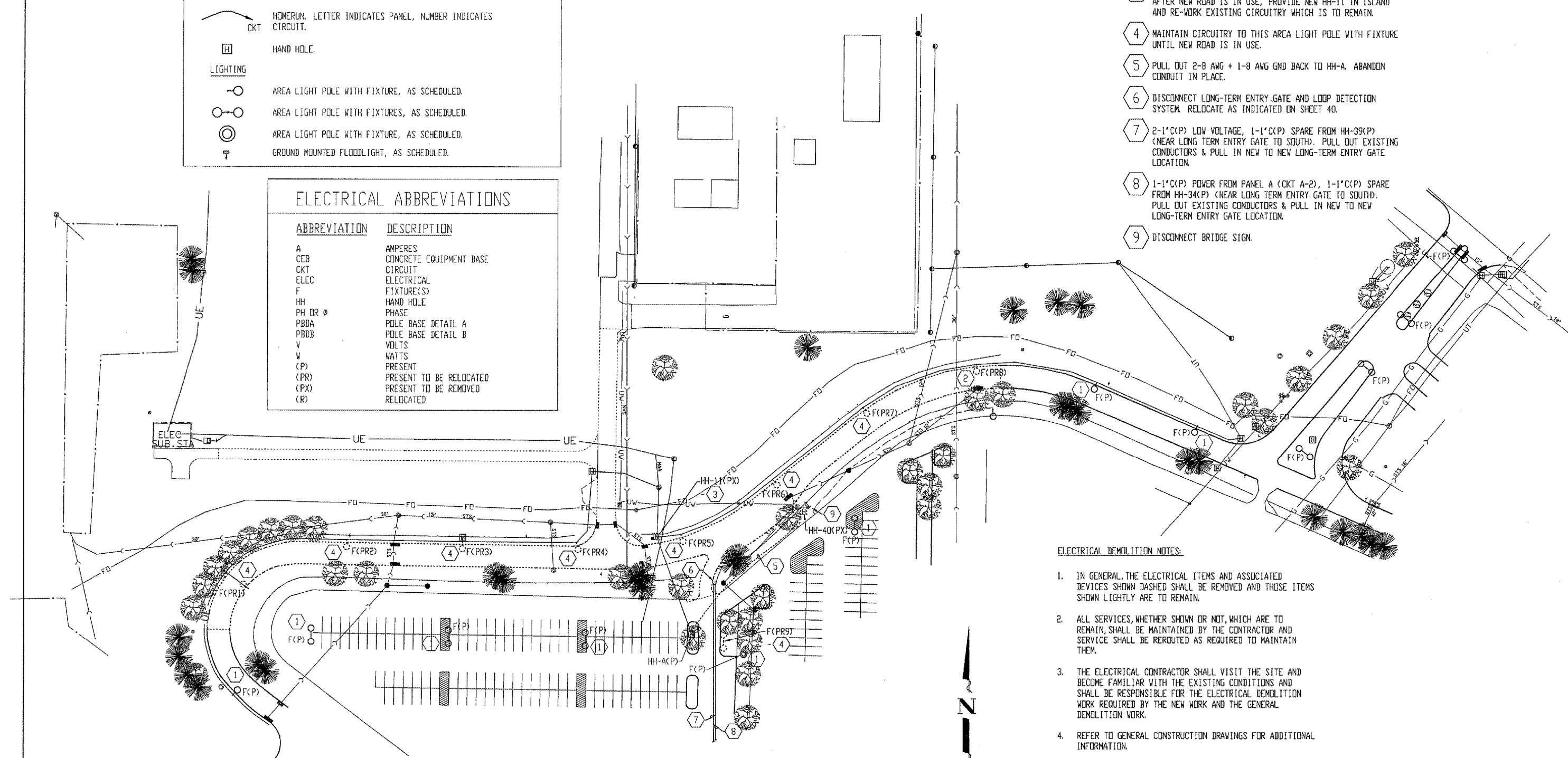
ABBREVIATION	DESCRIPTION
A	AMPERES
CEB	CONCRETE EQUIPMENT BASE
CKT	CIRCUIT
ELEC	ELECTRICAL
F	FIXTURE(S)
HH	HAND HOLE
PH OR Ø	PHASE
PBDA	POLE BASE DETAIL A
PBDB	POLE BASE DETAIL B
V	VOLTS
W	WATTS
(P)	PRESENT
(PR)	PRESENT TO BE RELOCATED
(PX)	PRESENT TO BE REMOVED
(R)	RELOCATED

ELECTRICAL DEMOLITION KEYED NOTES:

- 1 PROTECT AREA LIGHT POLE WITH FIXTURE DURING CONSTRUCTION.
- 2 REMOVE AND RE-INSTALL AREA LIGHT POLE WITH FIXTURE. REMOVE EXISTING BASE AND PROVIDE NEW BASE. REWORK EXISTING CONDUITS INTO NEW BASE.
- 3 MAINTAIN CIRCUITRY AS IS UNTIL NEW ROAD IS IN USE. AFTER NEW ROAD IS IN USE, PROVIDE NEW HH-11 IN ISLAND AND RE-WORK EXISTING CIRCUITRY WHICH IS TO REMAIN.
- 4 MAINTAIN CIRCUITRY TO THIS AREA LIGHT POLE WITH FIXTURE UNTIL NEW ROAD IS IN USE.
- 5 PULL OUT 2-8 AWG + 1-8 AWG GND BACK TO HH-A. ABANDON CONDUIT IN PLACE.
- 6 DISCONNECT LONG-TERM ENTRY GATE AND LOOP DETECTION SYSTEM. RELOCATE AS INDICATED ON SHEET 40.
- 7 2-1"Ø(P) LOW VOLTAGE, 1-1"Ø(P) SPARE FROM HH-39(P) (NEAR LONG TERM ENTRY GATE TO SOUTH). PULL OUT EXISTING CONDUCTORS & PULL IN NEW TO NEW LONG-TERM ENTRY GATE LOCATION.
- 8 1-1"Ø(P) POWER FROM PANEL A (CKT A-2), 1-1"Ø(P) SPARE FROM HH-34(P) (NEAR LONG TERM ENTRY GATE TO SOUTH). PULL OUT EXISTING CONDUCTORS & PULL IN NEW TO NEW LONG-TERM ENTRY GATE LOCATION.
- 9 DISCONNECT BRIDGE SIGN.

ELECTRICAL DEMOLITION NOTES:

1. IN GENERAL, THE ELECTRICAL ITEMS AND ASSOCIATED DEVICES SHOWN DASHED SHALL BE REMOVED AND THOSE ITEMS SHOWN LIGHTLY ARE TO REMAIN.
2. ALL SERVICES, WHETHER SHOWN OR NOT, WHICH ARE TO REMAIN, SHALL BE MAINTAINED BY THE CONTRACTOR AND SERVICE SHALL BE REROUTED AS REQUIRED TO MAINTAIN THEM.
3. THE ELECTRICAL CONTRACTOR SHALL VISIT THE SITE AND BECOME FAMILIAR WITH THE EXISTING CONDITIONS AND SHALL BE RESPONSIBLE FOR THE ELECTRICAL DEMOLITION WORK REQUIRED BY THE NEW WORK AND THE GENERAL DEMOLITION WORK.
4. REFER TO GENERAL CONSTRUCTION DRAWINGS FOR ADDITIONAL INFORMATION.



ELECTRICAL DEMOLITION PLAN

SCALE: 1" = 50'-0"

Scale: 1" = 50'

IEFM CONSULTING ENGINEERS

128 EAST 23RD AVENUE, P.O. BOX 130
 COAL VALLEY, ILLINOIS 61240
 PHONE (309) 799-5150
 FAX (309) 799-5190
 IEFM@IEFMCONSULTINGENGINEERS.COM

IL PROJ: MLI-3673 AIP PROJ: 3-17-0068-XX

QUAD CITY INTERNATIONAL AIRPORT
 Moline, IL



REVISIONS		
NO.	ITEM	DATE

DRAWN BY:	CHR
CHECKED BY:	DRM
DATE:	APRIL 20, 2007

McClure
 Engineering Associates, Inc.
 4700 Kennedy Drive
 (309) 792-9350
 East Moline, Illinois 61244
 Fax (309) 792-0874
 Designer Firm License: Illinois 181-000616
 Copyright 2007 By McClure Engineering Associates, Inc.

ELECTRICAL DEMOLITION PLAN
 ENTRANCE ROAD RELOCATION AND PARKING LOT EXPANSION
 MOLINE, ILLINOIS
 FILE NAME: HA\2007\07-11\11\DWG\07-11-35.dwg
 JOB NUMBER: 01-29-07-001

SHEET NO.
39
 OF 41