

TREE REMOVAL		
STA.	OFFSET	SIZE
86+15.68	13' RT	18"
86+58.27	12.3' RT	18"
86+78.00	16.2' RT	8"
87+47.76	10.5' RT	24"
86+13.50	18' LT	18"
86+98.96	14.6' LT	24"
87+84.42	14.4' LT	24"
88+32.22	12.8' LT	12"

GUARD POST REMOVAL		
STA.	OFFSET	EACH
RT 85+23 - RT 85+32		13
LT 85+70 - LT 89+27		28
RT 86+11 - RT 86+89		13
RT 88+29 - RT 88+85		4

GUARD POST		
STA.	OFFSET	EACH
RT 85+23 - RT 85+32		13
LT 85+70 - LT 89+27		60
RT 86+11 - RT 86+89		14
RT 88+29 - RT 88+85		10

NOTE:
CONTRACTOR SHALL COORDINATE WITH SITE PERSONNEL FOR GUARD POST PLACEMENT TO PROVIDE ACCESS OF EQUIPMENT

WIDTH TRANSITION
STA. 89+00 (22 FT) TO
STA. 89+50 (20 FT)

WOOD SIGN SUPPORT
STA. 88+80, 17' RT
14 FT

SIGN PANEL, TYPE 1
STA. 88+80, 17' RT
6.25 SQ. FT. (W5-1)

EXIST. CURVE C24
PI STA. = 88+48.67
Δ = 15° 10' 54" (RT)
D = 12° 43' 57"
R = 450.00'
T = 59.97'
L = 119.24'
E = 3.98'
P.C. STA. = 87+88.70
P.T. STA. = 89+07.94

EXIST. CURVE C23
PI STA. = 86+84.37
Δ = 8° 44' 08" (LT)
D = 9° 32' 57"
R = 600.00'
T = 45.83'
L = 91.48'
E = 1.75'
P.C. STA. = 86+38.54
P.T. STA. = 87+30.02

EXIST. CURVE C22
PI STA. = 84+83.56
Δ = 72° 09' 05" (LT)
D = 54° 34' 03"
R = 105.00'
T = 76.50'
L = 132.22'
E = 24.91'
P.C. STA. = 84+07.06
P.T. STA. = 85+39.28

REMOVE AND RE-ERECT EXISTING SIGNS
STA. 85+73.51, 17.20' LT
2 EACH

TEMPORARY DITCH CHECKS	
STA.	L.F.
LT 85+50	6
RT 86+50	6
LT 86+50	6
RT 87+50	6
LT 87+50	6

GRADING AND SHAPING DITCHES	
STA.	L.F.
LT 84+50 - LT 87+50	300
RT 85+50 - RT 87+50	200

FILE NAME =
#FILE#

USER NAME = #USER#
PLOT SCALE = #SCALE#
PLOT DATE = #DATE#

DESIGNED - R.J.D.
DRAWN - J.T.T.
CHECKED - R.J.D.
DATE - 4/4/12

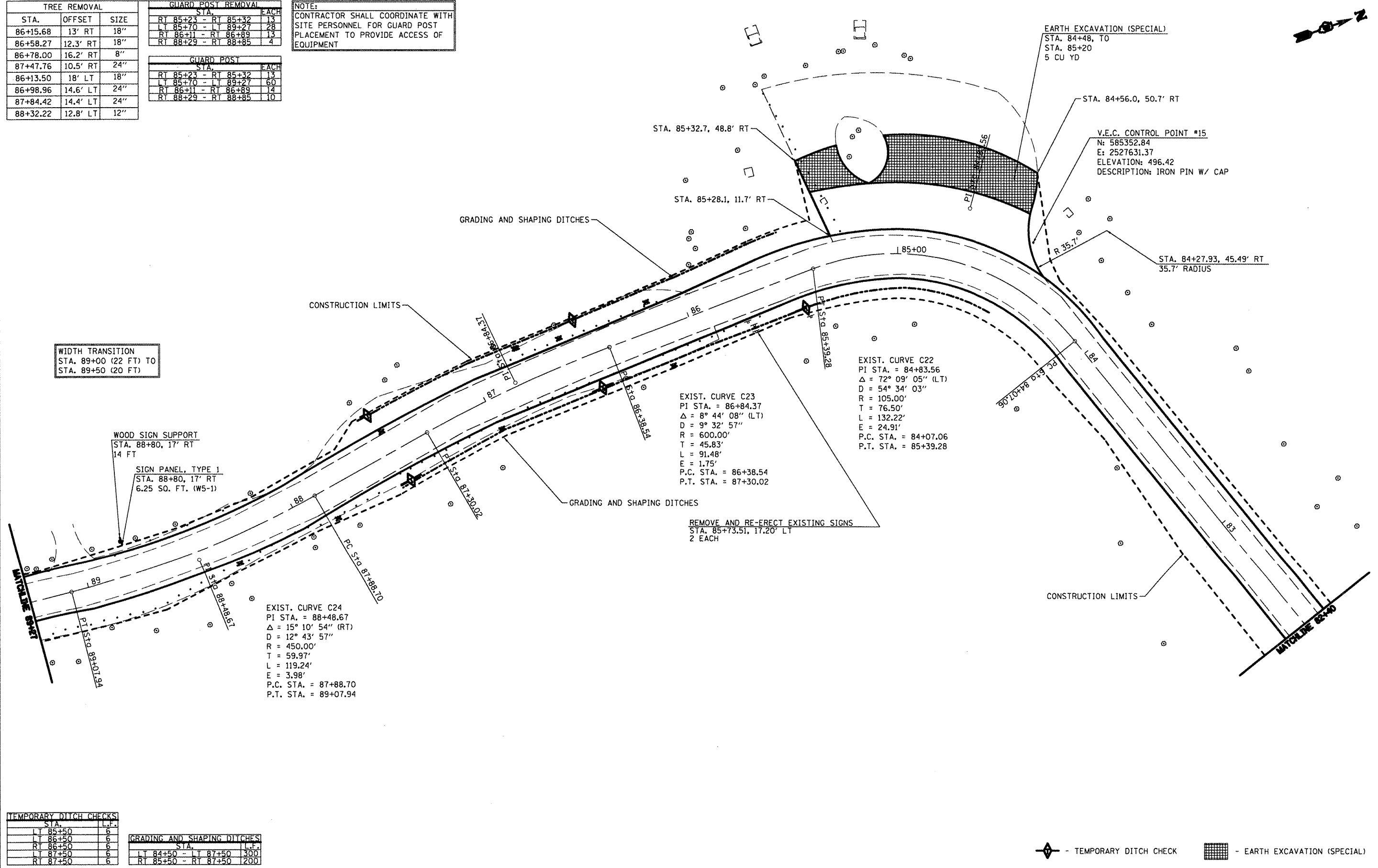
REVISED -
REVISED -
REVISED -
REVISED -

STATE OF ILLINOIS
DEPARTMENT OF TRANSPORTATION

WASHINGTON COUNTY CONSERVATION AREA
MAIN ALIGNMENT
SCALE: 1" = 20'
SHEET NO. 31 OF 112 SHEETS
STA. 82+40 TO STA. 89+27

SECTION	COUNTY	TOTAL SHEETS	SHEET NO.
	WASHINGTON	112	31

CONTRACT NO. 46223
ILLINOIS PBL. AID PROJECT



JOB NO. 200-081-W VASCONCELLES ENGINEERING CORP. DESIGN FIRM REGISTRATION NUMBER 14-P-000207