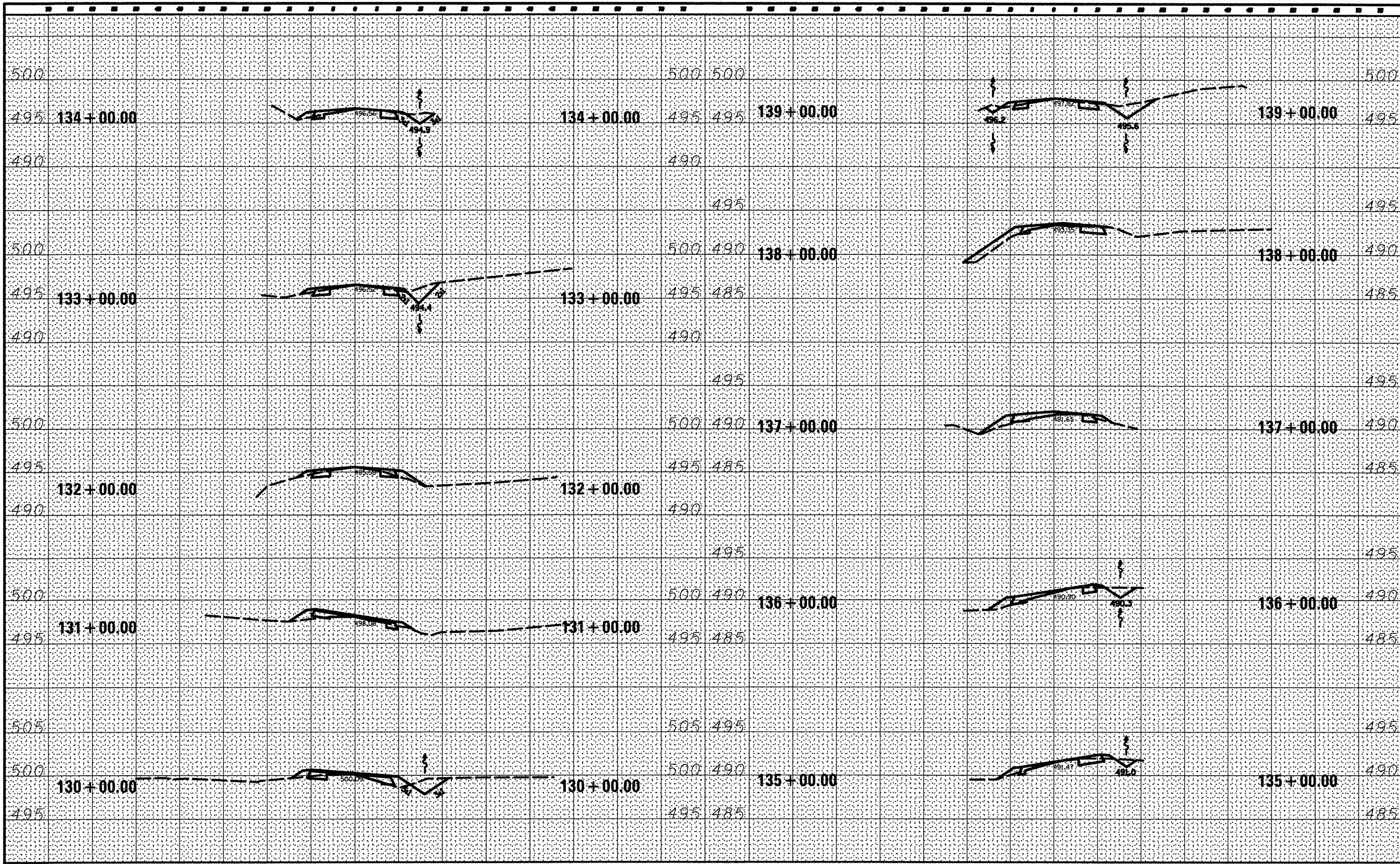


DATE	
BY	
FINISHED	
REVISIONS	
NO.	
DATE	
BY	
FINISHED	
REVISIONS	
NO.	
DATE	
BY	
FINISHED	
REVISIONS	
NO.	

DATE	
BY	
FINISHED	
REVISIONS	
NO.	
DATE	
BY	
FINISHED	
REVISIONS	
NO.	



FILE NAME :	USER NAME : *USER*	DESIGNED - R.H.D.	REVISED -	STATE OF ILLINOIS DEPARTMENT OF TRANSPORTATION	WASHINGTON COUNTY CONSERVATION AREA CROSS SECTIONS 130+00 - 139+00		SECTION COUNTY WASHINGTON CONTRACT NO. 46223	TOTAL SHEETS 112 SHEET NO. 96	
FILE#		DRAWN - S.J.K.	REVISED -		SCALE: 1" = 10'	SHEET NO. 96 OF 112 SHEETS			STA. 130+00.00 TO STA. 139+00.00
PLOT SCALE : *SCALE*		CHECKED - R.H.D.	REVISED -						
PLOT DATE : *DATE*		DATE - 4/4/12	REVISED -						
						ILLINOIS FED. AID PROJECT			

JOB NO. 200-061-W VASCORCELLES ENGINEERING CORP. DESIGN FIRM REGISTRATION NUMBER 104-002017