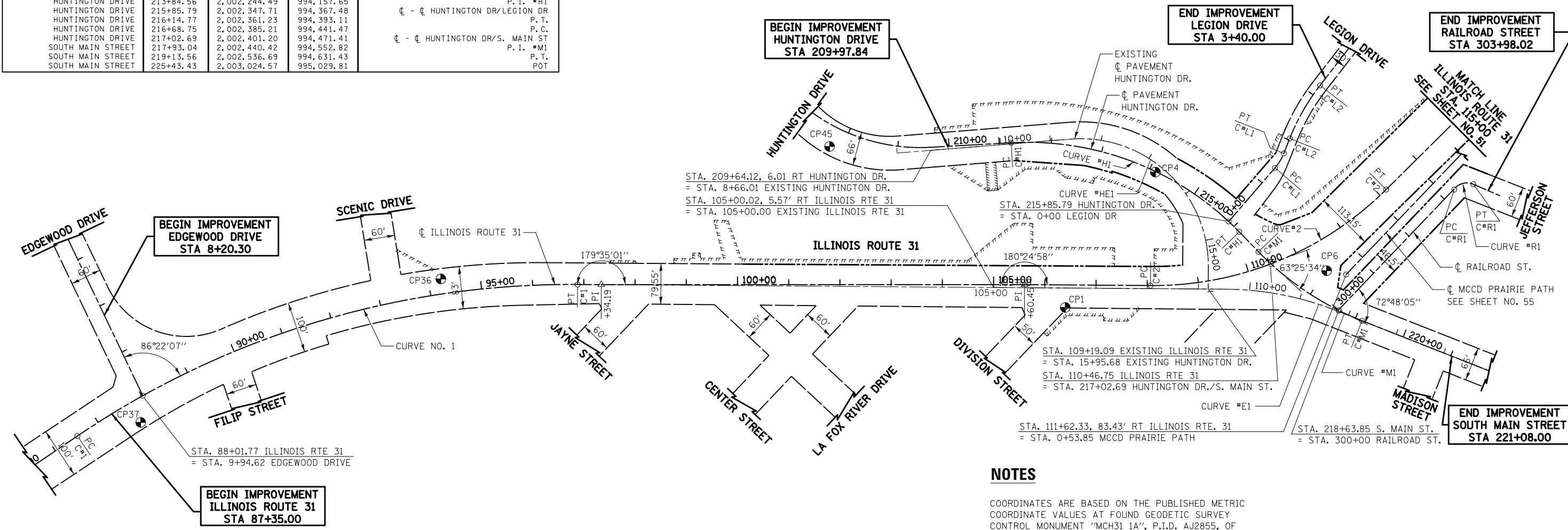


ALIGNMENT	STATION	NORTHING	EASTING	DESCRIPTION
ILLINOIS ROUTE 31 - PROP	82+00.00	1,999,645.69	994,211.15	POT
ILLINOIS ROUTE 31 - PROP	88+01.77	2,000,224.52	994,047.12	☉ - ☉ IL RTE 31/EDGEWOOD DR
ILLINOIS ROUTE 31 - PROP	86+51.78	2,000,078.99	994,083.25	P.C.
ILLINOIS ROUTE 31 - PROP	91+86.12	2,000,591.47	993,931.99	P. I. *C1
ILLINOIS ROUTE 31 - PROP	96+87.84	2,001,099.31	994,098.18	P. T.
ILLINOIS ROUTE 31 - PROP	97+34.19	2,001,143.35	994,112.59	KINK
ILLINOIS ROUTE 31 - PROP	105+60.45	2,001,930.48	994,363.86	KINK
ILLINOIS ROUTE 31 - PROP	108+06.38	2,002,164.22	994,440.35	P.C.
ILLINOIS ROUTE 31 - PROP	110+46.75	2,002,401.18	994,471.42	☉ - ☉ IL RTE 31/HUNTINGTON/S MAIN ST
ILLINOIS ROUTE 31 - PROP	110+75.44	2,002,419.93	994,524.03	P. I. *C2
ILLINOIS ROUTE 31 - PROP	113+16.31	2,002,659.52	994,401.59	P. T.
EDGEWOOD DRIVE	3+00.00	2,000,130.14	993358.95	POT
EDGEWOOD DRIVE	9+94.62	2,000,224.52	994,047.12	☉ - ☉ IL RTE 31/EDGEWOOD DR
ILLINOIS ROUTE 31 - EXIST	105+00	2,001,871.18	994,350.77	POT
ILLINOIS ROUTE 31 - EXIST	109+53.23	2,002,301.94	994,491.74	P.C.
ILLINOIS ROUTE 31 - EXIST	110+65.05	2,002,408.21	994,526.52	P. I. *E1
ILLINOIS ROUTE 31 - EXIST	111+74.33	2,002,494.82	994,597.24	P. T.
ILLINOIS ROUTE 31 - EXIST	118+58.26	2,003,024.57	995,029.81	POT
HUNTINGTON DRIVE - EXIST	8+00.00	2,001,771.64	994,043.23	POT
HUNTINGTON DRIVE - EXIST	11+39.71	2,002,102.50	994,120.26	P.C.
HUNTINGTON DRIVE - EXIST	14+11.26	2,002,366.98	994,181.84	P. I. *HE1
HUNTINGTON DRIVE - EXIST	15+52.47	2,002,282.88	994,440.04	P. T.
HUNTINGTON DRIVE - EXIST	16+02.27	2,002,267.45	994,487.38	POT
HUNTINGTON DRIVE	209+64.12	2,001,837.44	994,052.38	POT
HUNTINGTON DRIVE	211+21.76	2,001,990.06	994,091.85	P.C.
HUNTINGTON DRIVE	213+84.56	2,002,244.49	994,157.65	P. I. *H1
HUNTINGTON DRIVE	215+85.79	2,002,347.71	994,367.48	☉ - ☉ HUNTINGTON DR/LEGION DR
HUNTINGTON DRIVE	216+14.77	2,002,361.23	994,393.11	P. T.
HUNTINGTON DRIVE	216+68.75	2,002,385.21	994,441.47	P.C.
HUNTINGTON DRIVE	217+02.69	2,002,401.20	994,471.41	☉ - ☉ HUNTINGTON DR/S. MAIN ST
SOUTH MAIN STREET	217+93.04	2,002,440.42	994,552.82	P. I. *M1
SOUTH MAIN STREET	219+13.56	2,002,536.69	994,631.43	P. T.
SOUTH MAIN STREET	225+43.43	2,003,024.57	995,029.81	POT

ALIGNMENT	STATION	NORTHING	EASTING	DESCRIPTION
LEGION DRIVE	0+00.00	2,002,347.71	994,367.48	POT
LEGION DRIVE	1+38.33	2,002,465.67	994,295.22	P.C.
LEGION DRIVE	1+55.18	2,002,480.04	994,286.42	P. I. *L1
LEGION DRIVE	1+71.72	2,002,490.73	994,273.39	P. T.
LEGION DRIVE	2+03.04	2,002,510.60	994,249.18	P.C.
LEGION DRIVE	2+63.30	2,002,548.84	994,202.60	P. I. *L2
LEGION DRIVE	3+22.78	2,002,598.47	994,168.42	P. T.
LEGION DRIVE	4+85.75	2,002,732.70	994,075.99	POT
RAILROAD STREET	300+00.00	2,002,498.85	994,597.64	☉ - ☉ RAILROAD ST/S MAIN ST
RAILROAD STREET	303+30.07	2,002,788.60	994,439.56	P.C.
RAILROAD STREET	303+52.33	2,002,808.15	994,428.90	P. I. *L3
RAILROAD STREET	303+68.97	2,002,824.94	994,443.52	P. T.
RAILROAD STREET	304+25.00	2,002,867.20	994,480.31	POT

LEGEND

- EXISTING ALIGNMENT
- PROPOSED ALIGNMENT
- EXISTING ROW
- PROPOSED ROW
- PROPOSED PERMANENT EASEMENT
- PROPOSED TEMPORARY EASEMENT
- PROPERTY LINE
- CONTROL POINT



STA. 209+64.12, 6.01 RT HUNTINGTON DR.
 = STA. 8+66.01 EXISTING HUNTINGTON DR.
 STA. 105+00.02, 5.57' RT ILLINOIS RTE 31
 = STA. 105+00.00 EXISTING ILLINOIS RTE 31

STA. 109+19.09 EXISTING ILLINOIS RTE 31
 = STA. 15+95.68 EXISTING HUNTINGTON DR.
 STA. 110+46.75 ILLINOIS RTE 31
 = STA. 217+02.69 HUNTINGTON DR./S. MAIN ST.

STA. 111+62.33, 83.43' RT ILLINOIS RTE. 31
 = STA. 0+53.85 MCCD PRAIRIE PATH

STA. 218+63.85 S. MAIN ST.
 = STA. 300+00 RAILROAD ST.

NOTES

COORDINATES ARE BASED ON THE PUBLISHED METRIC COORDINATE VALUES AT FOUND GEODETIC SURVEY CONTROL MONUMENT "MCH31 1A", P.I.D. AJ2855, OF N.613,205.182-E.303,895.917. SURFACE COORDINATES ARE SHOWN IN U.S. SURVEY FEET. ELEVATIONS ARE ON NAVD 88 DATUM.

REFER TO THE PLAT OF HIGHWAYS, SHEET 410 -457 FOR ROW AND EASEMENT LOCATIONS.

EXISTING		
ILLINOIS ROUTE 31	HUNTINGTON DR.	
Curve #E1	Curve #HE1	
P. I.	STA. 110+65.05	STA. 14+11.26
Δ	21° 06' 55"	94° 56' 10"
D	9° 32' 58"	23° 00' 01"
R	600.00'	249.11'
T	111.82'	271.55'
L	221.10'	412.76'
E	10.33'	119.40'
e		
P. C.	STA. 109+53.23	STA. 11+39.71
P. T.	STA. 111+74.33	STA. 15+52.47

P. I.	ILLINOIS ROUTE 31		HUNTINGTON DR./S. MAIN ST.		LEGION DR.		RAILROAD ST.
	Curve #1	Curve #2	Curve #H1	Curve #M1	Curve #L1	Curve #L2	Curve #R1
STA.	91+86.12	110+75.44	213+84.56	217+93.04	1+55.18	2+63.30	303+49.46
Δ	34° 33' 55"	45° 11' 23"	49° 07' 33"	24° 23' 35"	19° 07' 41"	16° 04' 11"	69° 39' 26"
D	3° 20' 10"	8° 51' 43"	9° 57' 52"	9° 57' 51"	57° 17' 45"	13° 25' 15"	173° 37' 25"
R	1717.39'	646.54'	575.00'	575.02'	100.00'	426.92'	33.00'
T	534.34'	269.06'	262.80'	124.29'	16.85'	60.26'	22.96'
L	1036.06'	509.93'	493.01'	244.81'	33.38'	119.74'	40.12'
E	81.20'	53.75'	57.21'	13.28'	1.41'	4.23'	7.20'
e	2.32%						
P. C.	STA. 86+51.78	STA. 108+06.38	STA. 211+21.76	STA. 216+68.75	STA. 1+38.33	STA. 2+03.04	STA. 303+26.50
P. T.	STA. 96+87.84	STA. 113+16.31	STA. 216+14.77	STA. 219+13.56	STA. 1+71.72	STA. 3+22.78	STA. 303+66.62

CONTROL POINTS							
POINT ID	ALIGNMENT	STATION	OFFSET	NORTHING	EASTING	ELEVATION	DESCRIPTION
CP37	IL RTE 31	87+72.01	43.18	2,000,204.70	994,095.45	740.31	MAG NAIL SET
CP36	IL RTE 31	94+24.18	-29.47	2,000,848.20	994,006.61	754.23	MAG NAIL SET
CP1	IL RTE 31	106+40.34	44.02	2,001,992.72	994,430.55	743.84	X-CUT IN WALK SET
CP6	IL RTE 31	111+35.89	58.04	2,002,500.71	994,517.32	749.30	5/8" IR W/CAP SET
CP45	HUNTINGTON DR	207+78.52	39.35	2,001,649.96	993,990.93	814.95	5/8" IR W/CAP SET
CP4	HUNTINGTON DR	214+12.39	1.24	2,002,240.75	994,232.08	766.40	X-CUT IN CURB SET

