



MCHENRY COUNTY CONSERVATION DISTRICT PRAIRIE PATH								
	CURVE #P1	CURVE #P2	CURVE #P3	CURVE #P4	CURVE #P5	CURVE #P6	CURVE #P7	CURVE #P8
P. I.	STA. 5+65.42	STA. 8+32.29	STA. 10+41.84	STA. 12+43.38	STA. 14+86.07	STA. 16+26.39	STA. 26+41.24	STA. 25+32.94
Δ	18° 10' 20.00"	5° 11' 56.00"	26° 59' 08.00"	27° 43' 07.00"	111° 07' 21.00"	19° 53' 40.97"	193° 36' 21.40"	214° 27' 06.85"
D	5° 12' 31.35"	8° 11' 06.40"	11° 27' 32.96"	57° 17' 44.81"	44° 04' 25.24"	28° 38' 52.40"	63° 39' 43.12"	63° 39' 43.12"
R	1100.00'	700.00'	500.00'	100.00'	130.00'	200.00'	90.00'	90.00'
T	175.92'	31.78'	119.97'	24.67'	189.59'	35.08'	754.43'	290.28'
L	348.88'	63.52'	235.49'	48.38'	252.13'	69.45'	304.12'	336.86'
E	13.98'	0.72'	14.19'	3.00'	99.87'	3.05'	849.78'	393.91'
e	2.00%	2.00%	2.00%	2.00%	2.00%	2.00%	-2.00%	2.00%
P. C.	STA. 3+89.50	STA. 8+00.51	STA. 9+21.86	STA. 12+18.70	STA. 12+96.48	STA. 15+91.31	STA. 18+86.81	STA. 22+42.66
P. T.	STA. 7+38.38	STA. 8+64.03	STA. 11+57.36	STA. 12+67.08	STA. 15+48.61	STA. 16+60.76	STA. 21+90.93	STA. 25+79.52

ALIGNMENT	STATION	NORTHING	EASTING	DESCRIPTION
MCCD PRAIRIE PATH	0+53.85	2,002,534.76	994,535.89	POT
MCCD PRAIRIE PATH	3+89.50	2,002,829.42	994,375.14	P. C.
MCCD PRAIRIE PATH	5+65.42	2,002,983.85	994,290.89	P. I. #P1
MCCD PRAIRIE PATH	7+38.38	2,003,156.85	994,259.01	P. T.
MCCD PRAIRIE PATH	8+00.51	2,003,217.96	994,247.75	P. C.
MCCD PRAIRIE PATH	8+32.29	2,003,249.21	994,241.99	P. I. #P2
MCCD PRAIRIE PATH	8+64.03	2,003,279.81	994,233.42	P. T.
MCCD PRAIRIE PATH	9+21.86	2,003,335.51	994,217.83	P. C.
MCCD PRAIRIE PATH	10+41.84	2,003,451.04	994,185.48	P. I. #P3
MCCD PRAIRIE PATH	11+57.36	2,003,568.67	994,209.08	P. T.
MCCD PRAIRIE PATH	12+18.70	2,003,628.82	994,221.15	P. C.
MCCD PRAIRIE PATH	12+43.38	2,003,653.01	994,226.00	P. I. #P4
MCCD PRAIRIE PATH	12+67.08	2,003,672.16	994,241.55	P. T.
MCCD PRAIRIE PATH	12+96.48	2,003,694.99	994,260.07	P. C.
MCCD PRAIRIE PATH	14+86.07	2,003,842.20	994,379.55	P. I. #P5
MCCD PRAIRIE PATH	15+48.61	2,003,900.59	994,199.18	P. T.
MCCD PRAIRIE PATH	15+91.31	2,003,913.75	994,158.55	P. C.
MCCD PRAIRIE PATH	16+26.39	2,003,924.55	994,125.18	P. I. #P6
MCCD PRAIRIE PATH	16+60.76	2,003,946.07	994,097.48	P. T.
MCCD PRAIRIE PATH	18+86.81	2,004,084.72	993,918.95	P. C.
MCCD PRAIRIE PATH	-	2,004,013.64	993,863.75	C. C. #P7
MCCD PRAIRIE PATH	21+90.93	2,003,931.57	993,826.81	P. T.
MCCD PRAIRIE PATH	22+42.66	2,003,910.34	993,873.99	P. C.
MCCD PRAIRIE PATH	-	2,003,828.27	993,837.05	C. C. #P8
MCCD PRAIRIE PATH	25+79.52	2,003,781.49	993,760.17	P. T.
MCCD PRAIRIE PATH	26+13.88	2,003,810.84	993,742.30	POT

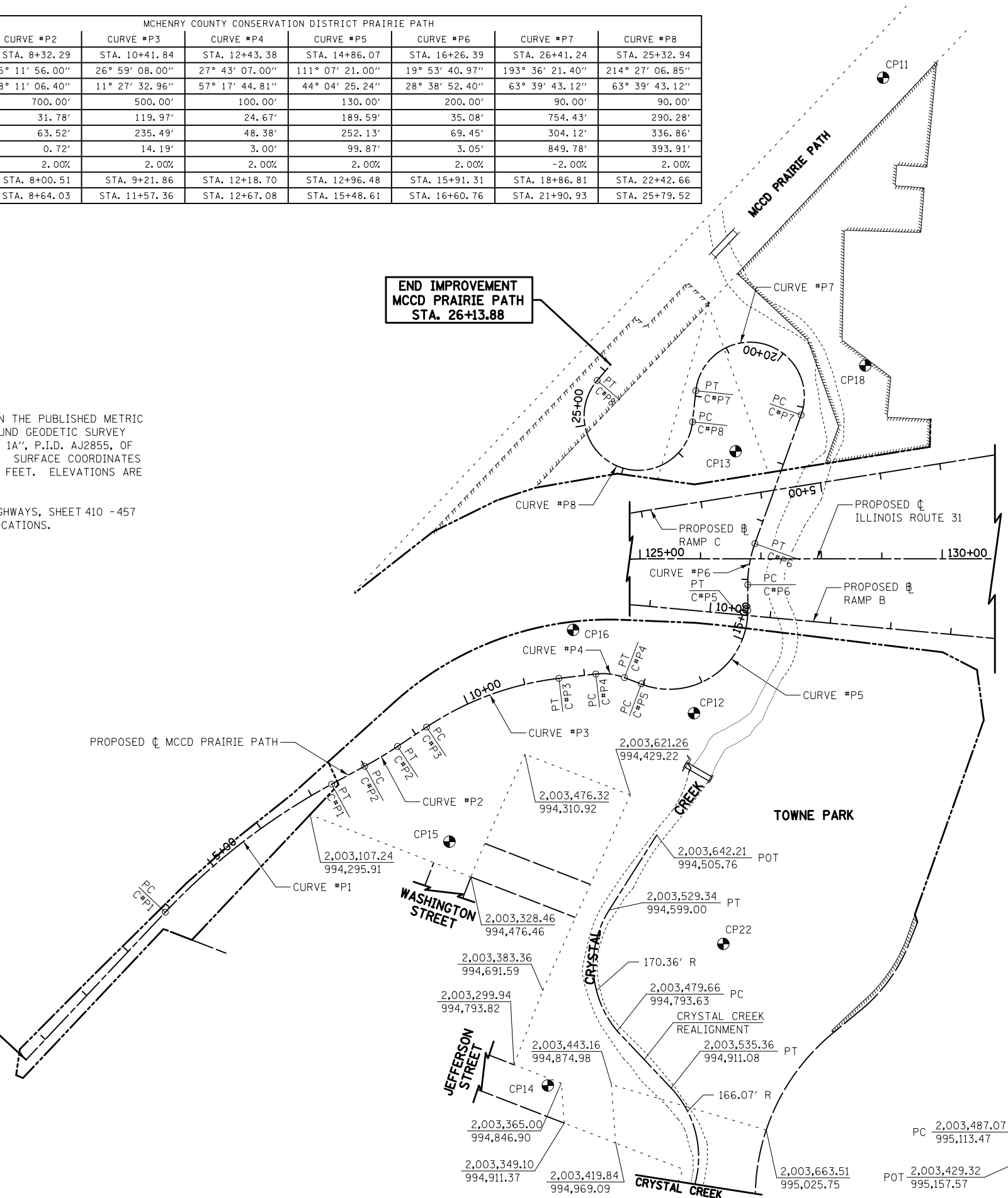
NOTES

COORDINATES ARE BASED ON THE PUBLISHED METRIC COORDINATE VALUES AT FOUND GEODETIC SURVEY CONTROL MONUMENT "MCH31 1A", P.I.D. AJ2855, OF N.613,205.182-E.303,895.917. SURFACE COORDINATES ARE SHOWN IN U.S. SURVEY FEET. ELEVATIONS ARE ON NAVD 88 DATUM.

REFER TO THE PLAT OF HIGHWAYS, SHEET 410 -457 FOR ROW AND EASEMENT LOCATIONS.

**END IMPROVEMENT
MCCD PRAIRIE PATH
STA. 26+13.88**

**BEGIN IMPROVEMENT
MCCD PRAIRIE PATH
STA. 0+53.85**



CONTROL POINTS						
POINT ID	NORTHING	STATION	OFFSET	EASTING	ELEVATION	DESCRIPTION
CP11	2,004,386.51	20+23.66	481.66	993,430.42	764.16	MAG NAIL SET
CP18	2,004,211.03	19+41.59	107.65	993,873.96	746.19	5/8" IR W/CAP SET
CP13	2,003,963.09	22+64.30	-81.11	993,942.42	741.89	5/8" IR W/CAP SET
CP16	2,003,615.83	11+90.03	-76.91	994,140.09	747.49	MAG NAIL SET
CP12	2,003,763.31	13+74.97	44.52	994,333.13	741.66	MAG NAIL SET
CP15	2,003,312.72	8+51.39	178.85	994,409.79	741.85	MAG NAIL SET
CP22	2,003,691.27	13+65.10	428.51	994,711.04	735.69	5/8" IR W/CAP SET
CP14	2,003,342.60	8+08.29	608.86	994,843.81	736.18	X-CUT IN WALK SET

LEGEND

- EXISTING ALIGNMENT
- PROPOSED ALIGNMENT
- EXISTING ROW
- PROPOSED ROW
- PROPOSED PERMANENT EASEMENT
- PROPOSED TEMPORARY EASEMENT
- PROPERTY LINE
- CONTROL POINT

