
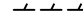
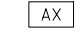

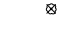

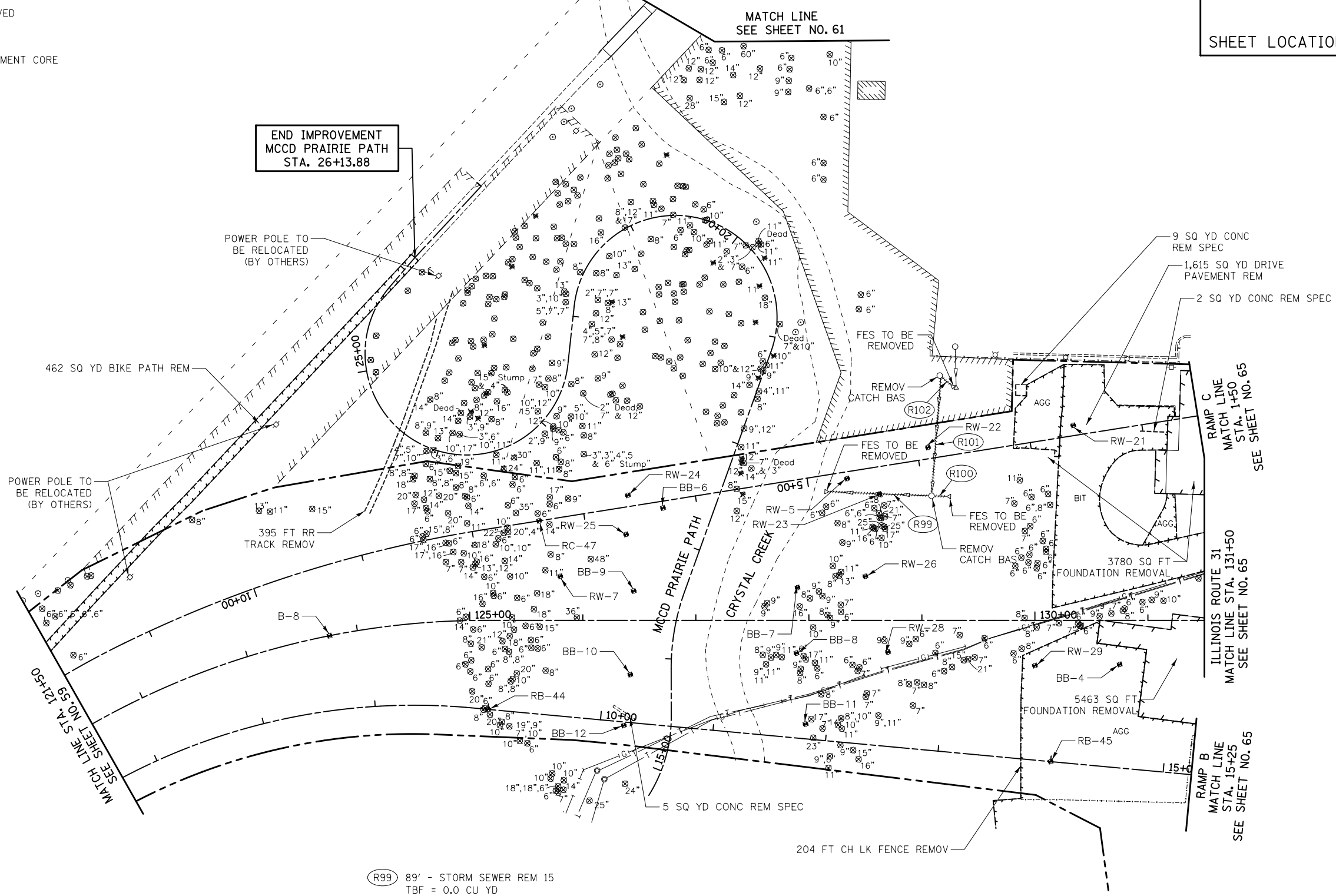
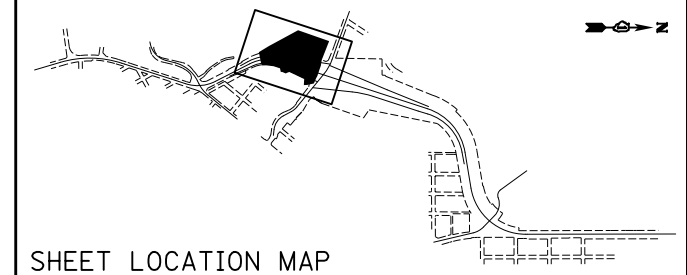


REMOVAL LEGEND

-  HMA SURFACE REMOVAL, 2 3/4"
-  REMOVAL LIMITS
-  STRUCTURE TO BE ADJUSTED
-  PIPE TO BE REMOVED
-  TREE REMOVAL
-  SOIL BORING/PAVEMENT CORE



END IMPROVEMENT
MCCD PRAIRIE PATH
STA. 26+13.88

MATCH LINE
SEE SHEET NO. 61

RAMP C
MATCH LINE
STA. 1+50
SEE SHEET NO. 65

ILLINOIS ROUTE 31
MATCH LINE STA. 131+50
SEE SHEET NO. 65

RAMP B
MATCH LINE
STA. 15+25
SEE SHEET NO. 65

- (R99) 89' - STORM SEWER REM 15
TBF = 0.0 CU YD
- (R100) 12' - STORM SEWER REM 12
TBF = 0.0 CU YD
- (R101) 103' - STORM SEWER REM 12
TBF = 0.0 CU YD
- (R102) 10' - STORM SEWER REM 12
TBF = 0.0 CU YD

NOTE
THE REMOVAL OF END SECTIONS SHALL BE PAID FOR AS "STORM SEWER REMOVAL".

ILLINOIS ROUTE 31
RAMP B
RAMP C
MCCD PRAIRIE PATH



FILE NAME = ... \D160F72-sht-rem-04.dgn	USER NAME = ctb	DESIGNED - CTB	REVISED -	STATE OF ILLINOIS DEPARTMENT OF TRANSPORTATION	REMOVAL PLAN	O.R. RTE. 0003	SECTION 18A-2	COUNTY MCHENRY	TOTAL SHEETS 825	SHEET NO. 60	
PLOT SCALE = 100.0000' / in.				SCALE: 1" = 50'		SHEET NO. 4 OF 13 SHEETS		STA. 121+50 TO STA. 131+50		CONTRACT NO. 60F72	
PLOT DATE = 5/2/2012				DATE = 5/3/2012		FED. ROAD DIST. NO. 1 ILLINOIS		FED. AID PROJECT			