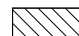
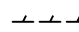
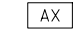

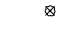
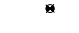
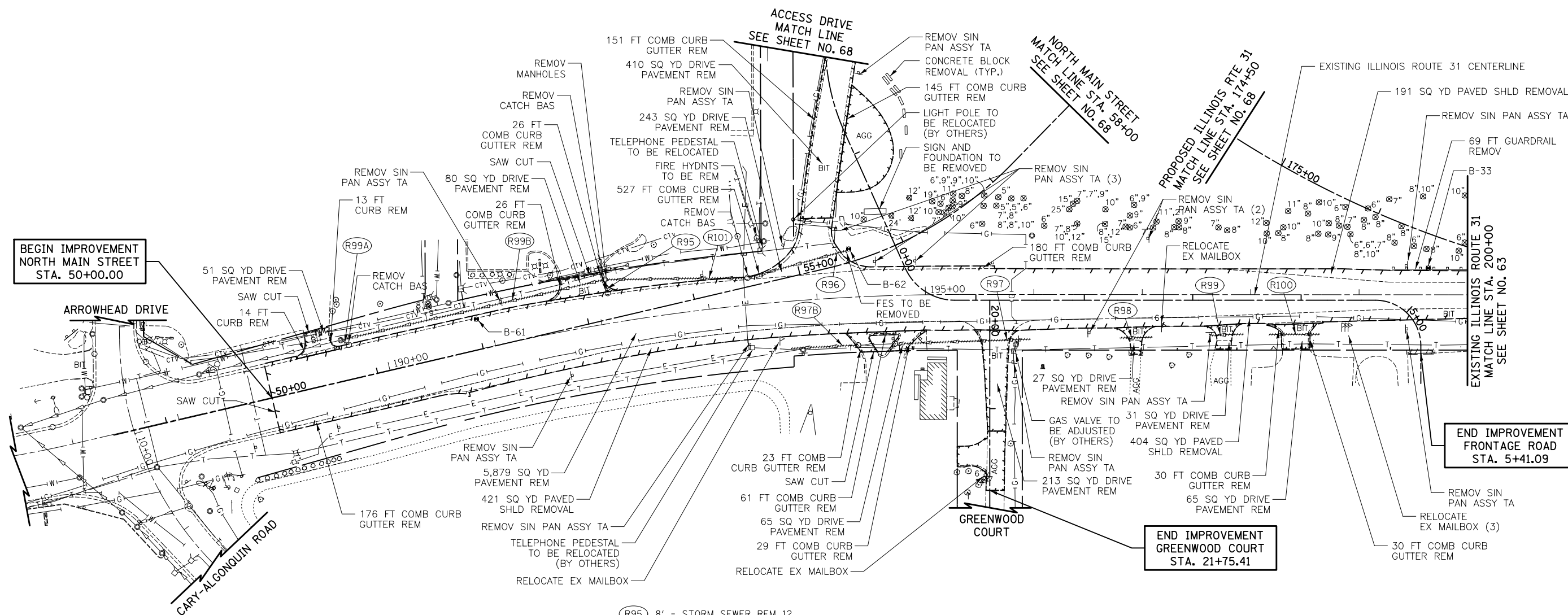
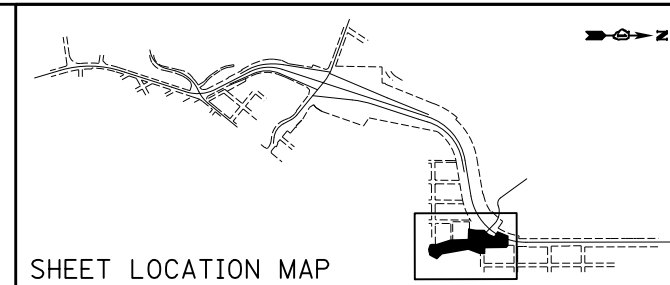


REMOVAL LEGEND

-  HMA SURFACE REMOVAL, 2 3/4"
-  REMOVAL LIMITS
-  STRUCTURE TO BE ADJUSTED
-  PIPE TO BE REMOVED
-  TREE REMOVAL
-  SOIL BORING/PAVEMENT CORE



**BEGIN IMPROVEMENT
NORTH MAIN STREET
STA. 50+00.00**

**END IMPROVEMENT
FRONTAGE ROAD
STA. 5+41.09**

**END IMPROVEMENT
GREENWOOD COURT
STA. 21+75.41**

- (R95) 8' - STORM SEWER REM 12
TBF = 7.9 CU YD
- (R96) 93' - STORM SEWER REM 21
TBF = 0.0 CU YD
- (R97) 123' - STORM SEWER REM 15
TBF = 1.5 CU YD
- (R97B) 60' - STORM SEWER REM 15
TBF = 0.0 CU YD
- (R98) 31' - PIPE CULVERT REMOV
TBF = 4.4 CU YD
- (R99) 32' - PIPE CULVERT REMOV
TBF = 4.7 CU YD
- (R100) 47' - PIPE CULVERT REMOV
TBF = 8.5 CU YD
- (R101) 127' - STORM SEWER REM 12
TBF = 1.0 CU YD
- (R99A) 4' - STORM SEWER REM 12
TBF = 1.5 CU YD
- (R99B) 246' - STORM SEWER REM 12
TBF = 0.0 CU YD

NOTE
THE REMOVAL OF END SECTIONS SHALL BE PAID FOR AS "STORM SEWER REMOVAL".

**NORTH MAIN STREET
FRONTAGE ROAD
GREENWOOD COURT**



FILE NAME = ... \D160F72-sht-rem-06.dgn	USER NAME = ctb	DESIGNED - CTB	REVISED -	STATE OF ILLINOIS DEPARTMENT OF TRANSPORTATION	REMOVAL PLAN	O.R. RTE. 0003	SECTION 18A-2	COUNTY MCHENRY	TOTAL SHEETS 825	SHEET NO. 62		
	PLOT SCALE = 100.0000' / 1"	CHECKED - GAB	REVISED -			SCALE: 1" = 50'	SHEET NO. 6 OF 13 SHEETS	STA. 50+00	TO STA. 58+00	CONTRACT NO. 60F72		
	PLOT DATE = 5/2/2012	DATE = 5/3/2012	REVISED -			FED. ROAD DIST. NO. 1 ILLINOIS FED. AID PROJECT						