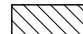
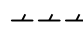




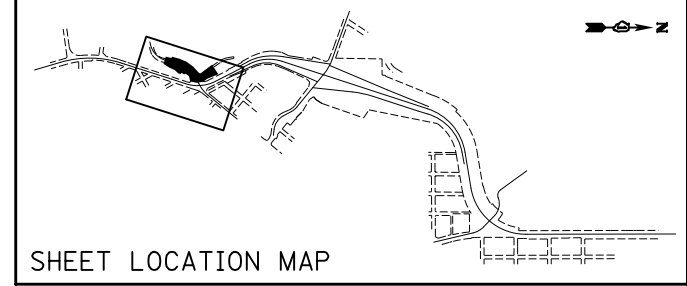
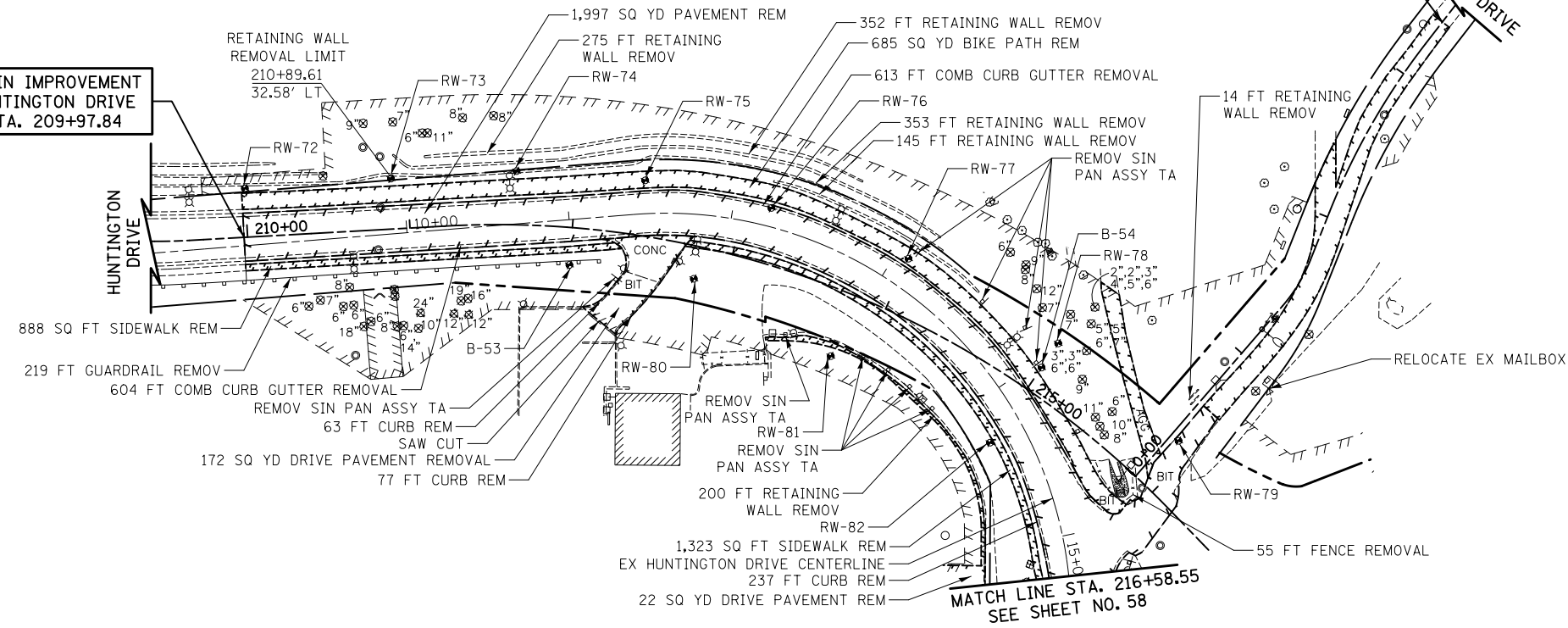


REMOVAL LEGEND

-  HMA SURFACE REMOVAL, 2 3/4"
-  REMOVAL LIMITS
-  STRUCTURE TO BE ADJUSTED
-  PIPE TO BE REMOVED
-  TREE REMOVAL
-  SOIL BORING/PAVEMENT CORE



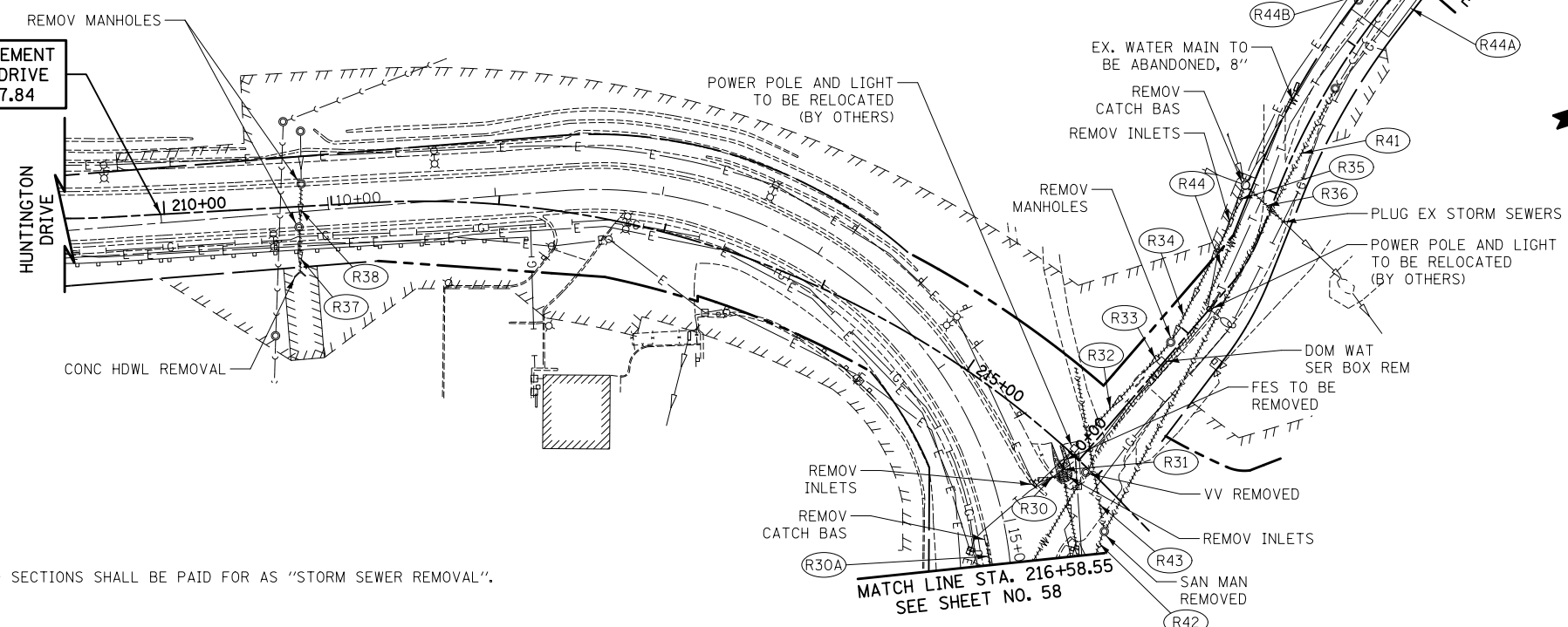
BEGIN IMPROVEMENT
HUNTINGTON DRIVE
STA. 209+97.84



END IMPROVEMENT
LEGION DRIVE
STA. 3+40.00

MATCH LINE STA. 216+58.55
SEE SHEET NO. 58

BEGIN IMPROVEMENT
HUNTINGTON DRIVE
STA. 209+97.84



END IMPROVEMENT
LEGION DRIVE
STA. 3+40.00

MATCH LINE STA. 216+58.55
SEE SHEET NO. 58

NOTE
THE REMOVAL OF END SECTIONS SHALL BE PAID FOR AS "STORM SEWER REMOVAL".

- (R30) 17' - STORM SEWER REM 12
TBF = 7.8 CU YD
- (R30A) 23' - STORM SEWER REM 18
TBF = 0.0 CU YD
- (R31) 6' - STORM SEWER REM 12
TBF = .4 CU YD
- (R32) 40' - STORM SEWER REM 18
TBF = 8.8 CU YD
- (R33) 24' - STORM SEWER REM 18
TBF = 4.7 CU YD
- (R34) 76' - STORM SEWER REM 18
TBF = 15.3 CU YD
- (R35) 19' - STORM SEWER REM 15
TBF = 3.4 CU YD
- (R36) 29' - STORM SEWER REM 24
TBF = 1.4 CU YD
- (R37) 25' - STORM SEWER REM 18
TBF = 5.9 CU YD
- (R38) 22' - STORM SEWER REM 18
TBF = 4.8 CU YD
- (R41) 299' SAN SEW REMOV 8
TBF = 178.6 CU YD
- (R42) 12' SAN SEW REMOV 8
TBF = 14.2 CU YD
- (R43) 97' SAN SEW REMOV 8
TBF = 12.0 CU YD
- (R44) 240' WATER MAIN REMOV 8
TBF = 37.9 CU YD
- (R44A) 51' WATER SERV LINE REM
TBF = 0.0 CU YD
- (R44B) 9' WATER MAIN REMOV 8
TBF = 0.0 CU YD

HUNTINGTON DRIVE
LEGION DRIVE



FILE NAME = ... \D160F72-sht-rem-08.dgn	USER NAME = ctb	DESIGNED - CTB	REVISED -
		DRAWN - ARA	REVISED -
	PLOT SCALE = 100.0000' / in.	CHECKED - GAB	REVISED -
	PLOT DATE = 5/2/2012	DATE - 5/3/2012	REVISED -

STATE OF ILLINOIS
DEPARTMENT OF TRANSPORTATION

REMOVAL PLAN

SCALE: 1" = 50' SHEET NO. 8 OF 13 SHEETS STA. 209+97.84 TO STA. 216+58.55

O.R. RTE.	SECTION	COUNTY	TOTAL SHEETS	SHEET NO.
0003	18A-2	MCHENRY	825	64
CONTRACT NO. 60F72				
FED. ROAD DIST. NO. 1 ILLINOIS FED. AID PROJECT				