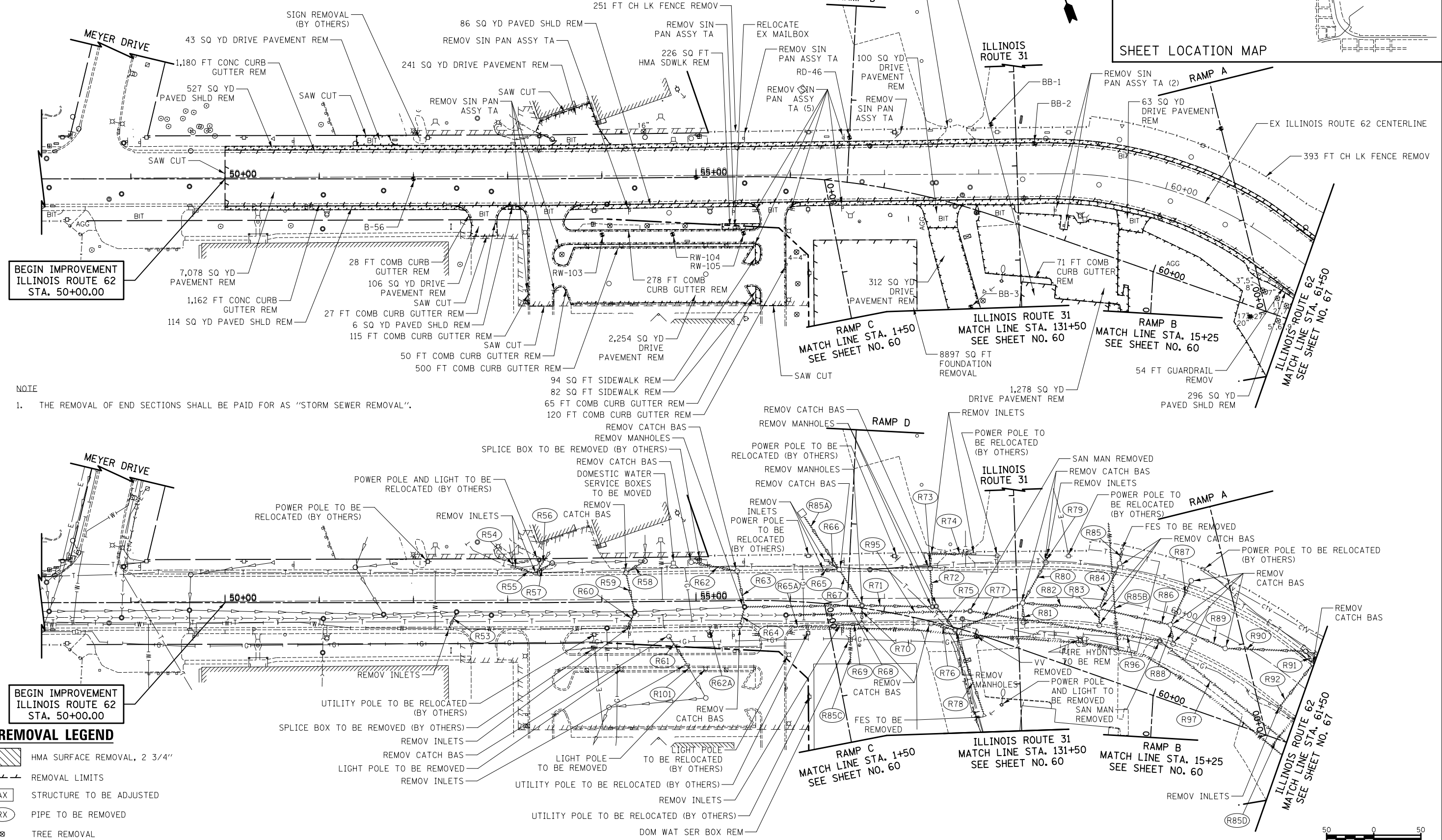
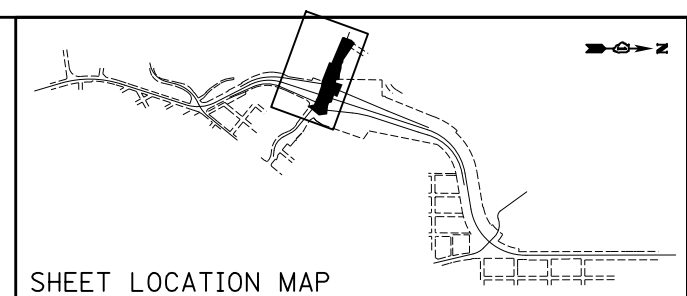


SHEET LOCATION MAP



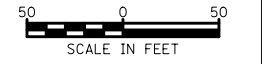
BEGIN IMPROVEMENT ILLINOIS ROUTE 62 STA. 50+00.00

BEGIN IMPROVEMENT ILLINOIS ROUTE 62 STA. 50+00.00

NOTE  
1. THE REMOVAL OF END SECTIONS SHALL BE PAID FOR AS "STORM SEWER REMOVAL".

REMOVAL LEGEND

- HMA SURFACE REMOVAL, 2 3/4"
- REMOVAL LIMITS
- STRUCTURE TO BE ADJUSTED
- PIPE TO BE REMOVED
- TREE REMOVAL
- SOIL BORING/PAVEMENT CORE



FILE NAME = ... \D160F72-sht-rem-09.dgn

USER NAME = ctb  
PLOT SCALE = 100.0000' / in.  
PLOT DATE = 5/2/2012

DESIGNED - CTB  
DRAWN - ARA  
CHECKED - GAB  
DATE - 5/3/2012

REVISED -  
REVISED -  
REVISED -  
REVISED -

STATE OF ILLINOIS  
DEPARTMENT OF TRANSPORTATION

REMOVAL PLAN  
SCALE: 1" = 50'  
SHEET NO. 9 OF 13 SHEETS  
STA. 50+00 TO STA. 61+50

O.R. RTE.	SECTION	COUNTY	TOTAL SHEETS	SHEET NO.
0003	18A-2	MCHENRY	825	65
CONTRACT NO. 60F72				
FED. ROAD DIST. NO. 1 ILLINOIS FED. AID PROJECT				