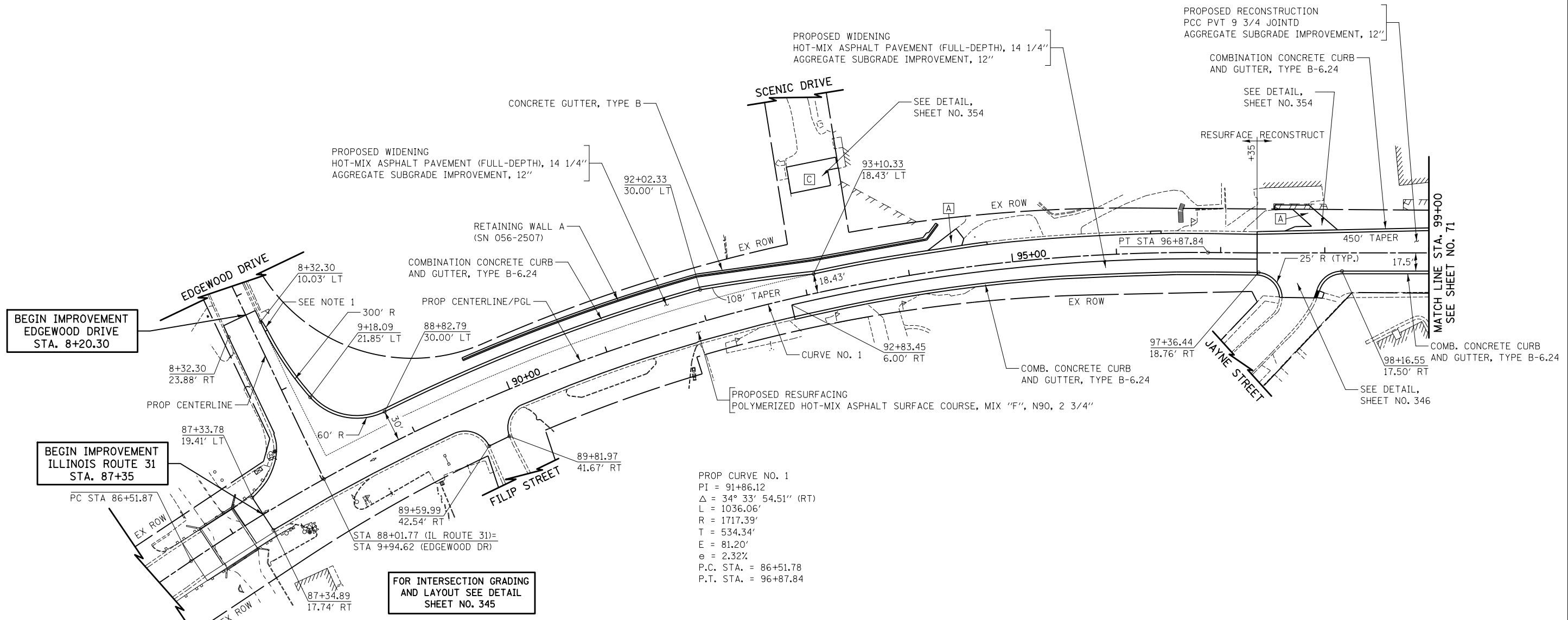


SHEET LOCATION MAP

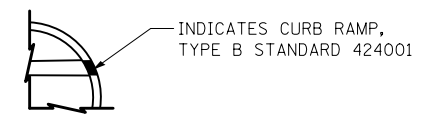


PROP CURVE NO. 1  
 PI = 91+86.12  
 $\Delta = 34^\circ 33' 54.51''$  (RT)  
 L = 1036.06'  
 R = 1717.39'  
 T = 534.34'  
 E = 81.20'  
 $e = 2.32\%$   
 P.C. STA. = 86+51.78  
 P.T. STA. = 96+87.84

FOR INTERSECTION GRADING  
 AND LAYOUT SEE DETAIL  
 SHEET NO. 345

**LEGEND**

- [A] RESIDENTIAL PCC DRIVEWAY  
 -PCC DRIVEWAY PAVEMENT, 6"  
 -SUB-BASE GRANULAR MATERIAL, TYPE B, 4"
- [B] COMMERCIAL PCC DRIVEWAY  
 -PCC DRIVEWAY PAVEMENT, 8"  
 -SUB-BASE GRANULAR MATERIAL, TYPE B, 4"
- [C] RESIDENTIAL HMA DRIVEWAY  
 -2" HMA SURFACE COURSE, MIX D, N50  
 -2 1/4" HMA BASE COURSE  
 -SUB-BASE GRANULAR MATERIAL, TYPE B, 4"
- [D] COMMERCIAL HMA DRIVEWAY OR PARKING LOT  
 -2" HMA SURFACE COURSE, MIX D, N50  
 -2 1/4" HMA BASE COURSE  
 -SUB-BASE GRANULAR MATERIAL, TYPE B, 10"



- NOTES:
- TRANSITION FROM B-6.24 TO B-6.12 OVER 10'. PAID FOR AS "COMBINATION CONCRETE CURB & GUTTER, TYPE B-6.24".

ILLINOIS ROUTE 31  
 EDGEWOOD DRIVE



FILE NAME = ... \D160F72-sht-pln-01.dgn	USER NAME = ctb	DESIGNED - CTB	REVISED -	<b>STATE OF ILLINOIS DEPARTMENT OF TRANSPORTATION</b>	<b>PLAN</b>	O.R. RTE. 0003	SECTION 18A-2	COUNTY MCHENRY	TOTAL SHEETS 825	SHEET NO. 70		
PLOT SCALE = 100.0000' / in.	CHECKED - GAB	DRAWN - ARA	REVISED -			SCALE: 1" = 50'	SHEET NO. 1 OF 15 SHEETS	STA. 87+35	TO STA. 99+00	CONTRACT NO. 60F72		
PLOT DATE = 5/2/2012	DATE - 5/3/2012		REVISED -			FED. ROAD DIST. NO. 1 ILLINOIS FED. AID PROJECT						