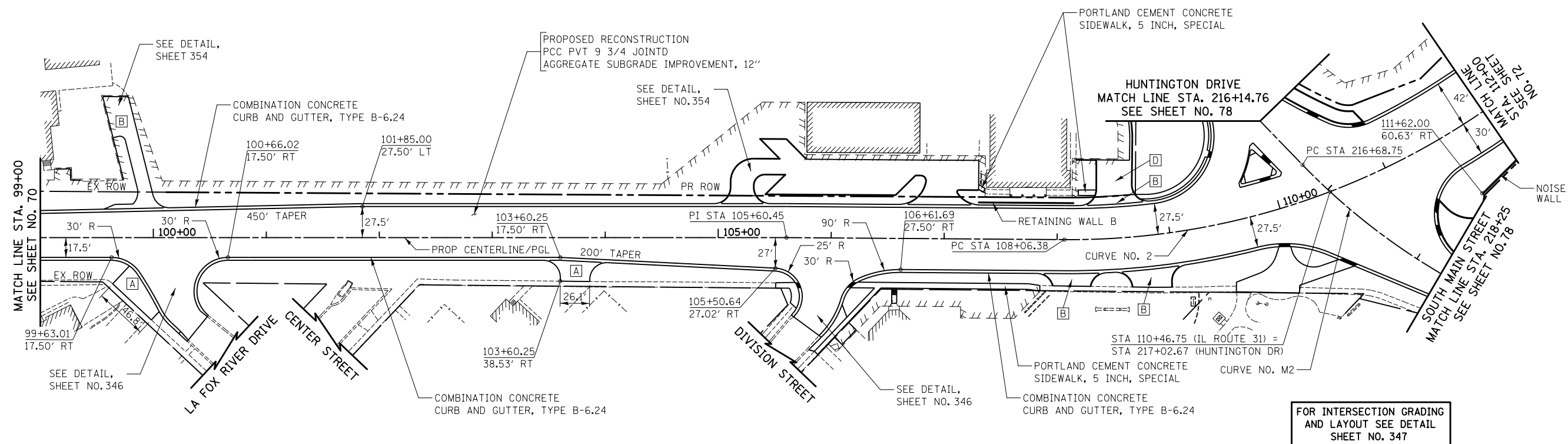
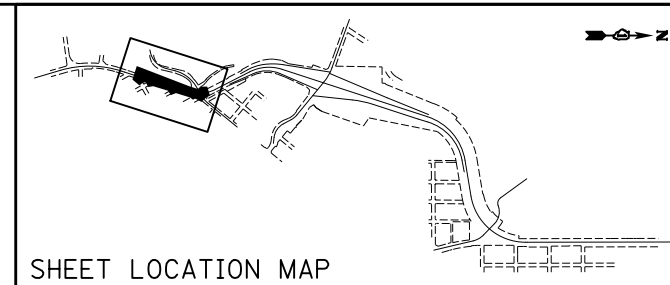


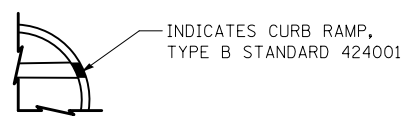
NOTES:

1. TRANSITION FROM B-6.24 TO B-6.12 OVER 10'. PAID FOR AS "COMBINATION CONCRETE CURB & GUTTER, TYPE B-6.24".
2. FOR STATIONS, OFFSETS, RADII, DIMENSIONS, AND TAPERS IN THE INTERSECTION OF THE ALGONQUIN BYPASS AND HUNTINGTON DRIVE, SEE SHEET NO. 97 .
3. ALL DRIVEWAY RADII SHALL BE 15' UNLESS OTHERWISE NOTED.



LEGEND

- [A]** RESIDENTIAL PCC DRIVEWAY
-PCC DRIVEWAY PAVEMENT, 6"
-SUB-BASE GRANULAR MATERIAL, TYPE B, 4"
- [B]** COMMERCIAL PCC DRIVEWAY
-PCC DRIVEWAY PAVEMENT, 8"
-SUB-BASE GRANULAR MATERIAL, TYPE B, 4"
- [C]** RESIDENTIAL HMA DRIVEWAY
-2" HMA SURFACE COURSE, MIX D, N50
-2 1/4" HMA BASE COURSE
-SUB-BASE GRANULAR MATERIAL, TYPE B, 4"
- [D]** COMMERCIAL HMA DRIVEWAY OR PARKING LOT
-2" HMA SURFACE COURSE, MIX D, N50
-2 1/4" HMA BASE COURSE
-SUB-BASE GRANULAR MATERIAL, TYPE B, 10"



PROP CURVE NO. 2
 PI STA. = 110+75.44
 $\Delta = 45^\circ 11' 23''$ (LT)
 R = 646.54'
 T = 269.06'
 L = 509.93'
 E = 53.75'
 e = R.C.
 P.C. STA. = 108+06.38
 P.T. STA. = 113+16.31

ILLINOIS ROUTE 31



FILE NAME = ... \D160F72-sht-pln-02.dgn	USER NAME = ctb	DESIGNED - CTB	REVISED -	STATE OF ILLINOIS DEPARTMENT OF TRANSPORTATION	PLAN	O.R. RTE. = 0003	SECTION = 18A-2	COUNTY = MCHENRY	TOTAL SHEETS = 825	SHEET NO. = 71		
PLOT SCALE = 100.0000' / in.						SCALE: 1" = 50'		SHEET NO. 2 OF 15 SHEETS		STA. 99+00 TO STA. 112+00		CONTRACT NO. 60F72
PLOT DATE = 5/2/2012						DATE = 5/3/2012		FED. ROAD DIST. NO. 1 ILLINOIS FED. AID PROJECT				
CONTRACT NO. 60F72												