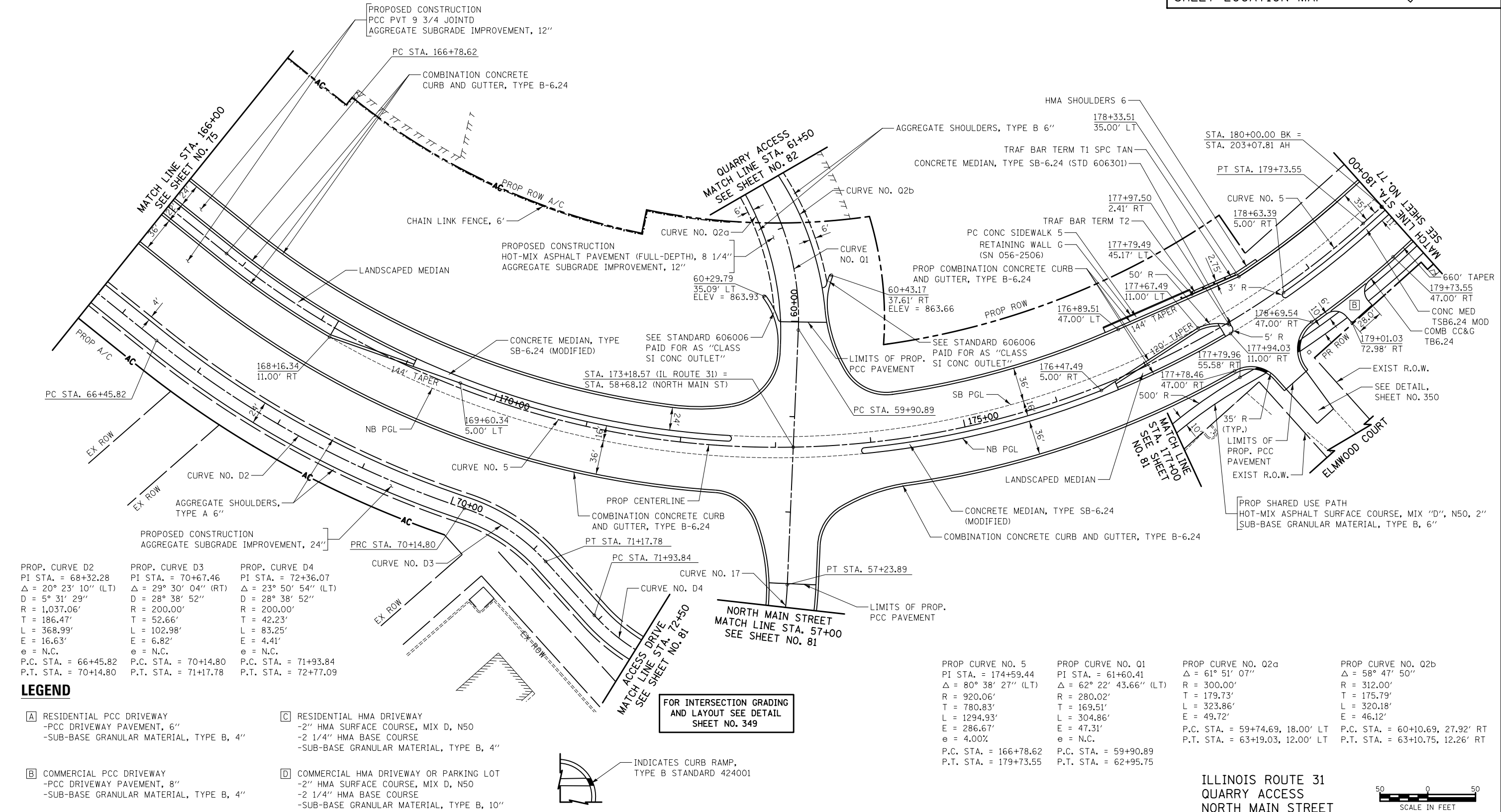
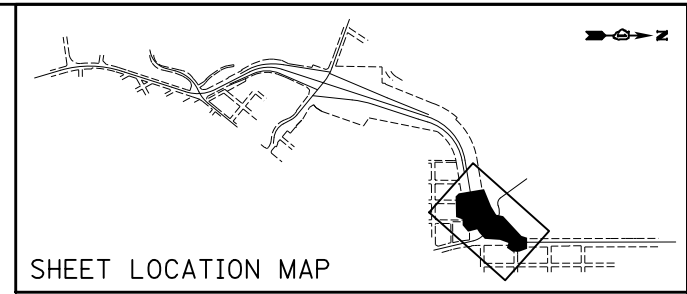


NOTES:

- FOR STATIONS, OFFSETS, RADII, DIMENSIONS, AND TAPERS IN THE INTERSECTION OF THE ALGONQUIN BYPASS AND THE QUARRY ACCESS/NORTH MAIN STREET, SEE SHEET NO. 349.
- TRANSITION CURB HEIGHT FROM 6" TO 0" OVER 10'. PAID FOR AS "COMBINATION CONCRETE CURB & GUTTER, TYPE B-6.24".
- ALL DRIVEWAY RADII SHALL BE 15' UNLESS OTHERWISE NOTED.



FILE NAME = ...\\D160F72-sht-pln-07.dgn	USER NAME = ctb	DESIGNED - CTB	REVISED -	STATE OF ILLINOIS DEPARTMENT OF TRANSPORTATION	PLAN	O.R. RTE.	SECTION	COUNTY	TOTAL SHEETS	SHEET NO.	
	PLOT SCALE = 100.0000' / in.	CHECKED - GAB	REVISED -			0003	18A-2	MCHENRY	825	76	
	PLOT DATE = 5/2/2012	DATE - 5/3/2012	REVISED -			CONTRACT NO. 60F72					
						FED. ROAD DIST. NO. 1 ILLINOIS FED. AID PROJECT					