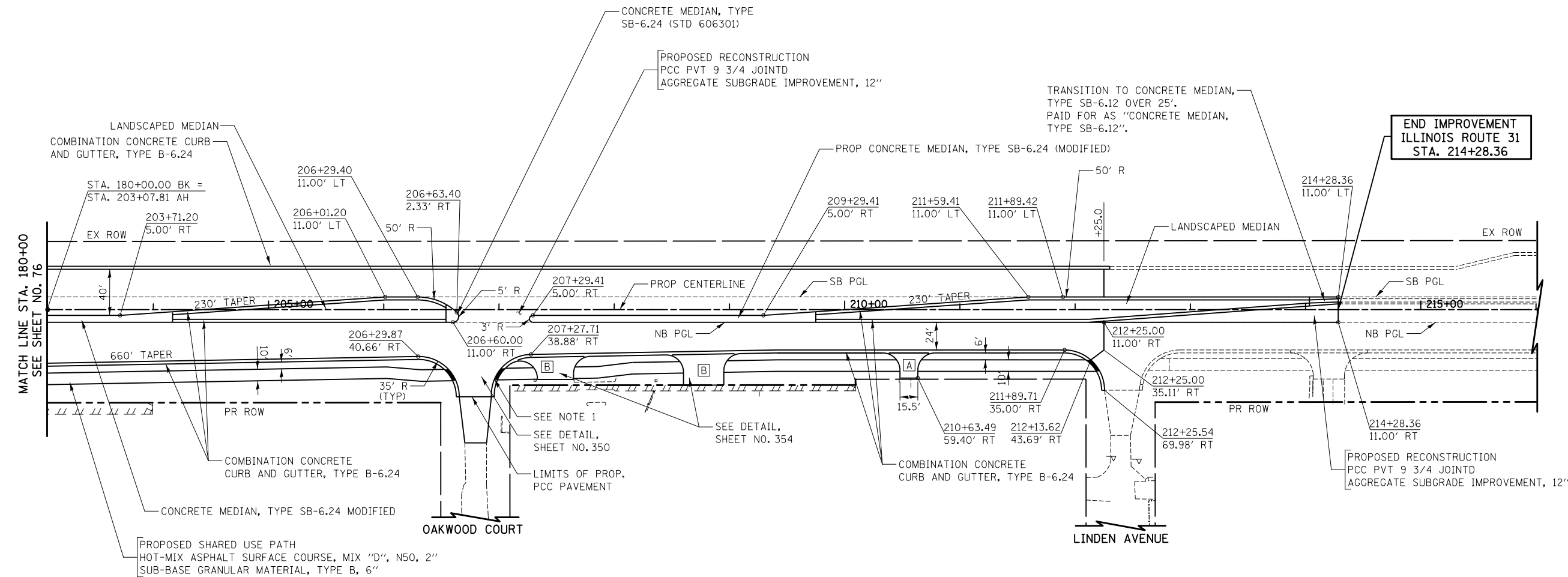
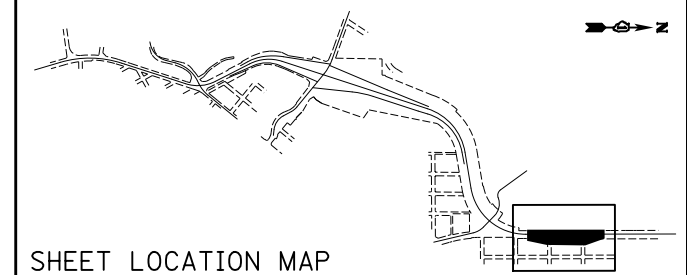


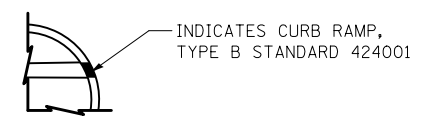
NOTES:

1. DEPRESS CURB FROM CROSSWALK TO CURB LIMIT.
2. ALL DRIVEWAY RADII SHALL BE 15' UNLESS OTHERWISE NOTED.



LEGEND

- [A] RESIDENTIAL PCC DRIVEWAY
-PCC DRIVEWAY PAVEMENT, 6"
-SUB-BASE GRANULAR MATERIAL, TYPE B, 4"
- [B] COMMERCIAL PCC DRIVEWAY
-PCC DRIVEWAY PAVEMENT, 8"
-SUB-BASE GRANULAR MATERIAL, TYPE B, 4"
- [C] RESIDENTIAL HMA DRIVEWAY
-2" HMA SURFACE COURSE, MIX D, N50
-2 1/4" HMA BASE COURSE
-SUB-BASE GRANULAR MATERIAL, TYPE B, 4"
- [D] COMMERCIAL HMA DRIVEWAY OR PARKING LOT
-2" HMA SURFACE COURSE, MIX D, N50
-2 1/4" HMA BASE COURSE
-SUB-BASE GRANULAR MATERIAL, TYPE B, 10"



ILLINOIS ROUTE 31



FILE NAME = ... \D160F72-sht-pln-08.dgn	USER NAME = ctb	DESIGNED - CTB	REVISED -	STATE OF ILLINOIS DEPARTMENT OF TRANSPORTATION	PLAN	O.R. RTE. = 0003	SECTION = 18A-2	COUNTY = MCHENRY	TOTAL SHEETS = 825	SHEET NO. = 77
	PLOT SCALE = 100.0000' / in.	CHECKED - GAB	REVISED -			SCALE: 1" = 50'	SHEET NO. 8 OF 15 SHEETS	STA. 180+00 TO STA. 214+28.36	CONTRACT NO. 60F72	
PLOT DATE = 5/2/2012	DATE = 5/3/2012	REVISED -		FED. ROAD DIST. NO. 1 ILLINOIS FED. AID PROJECT						