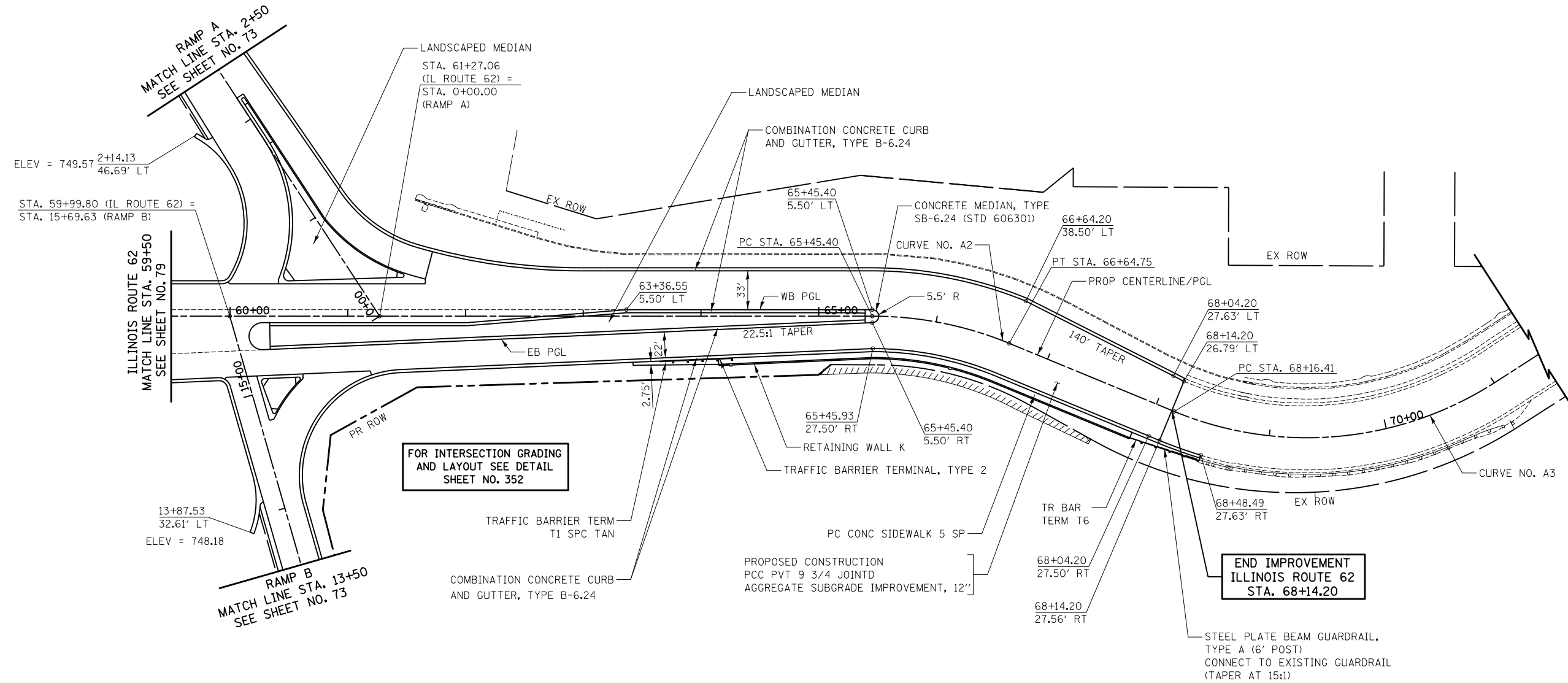
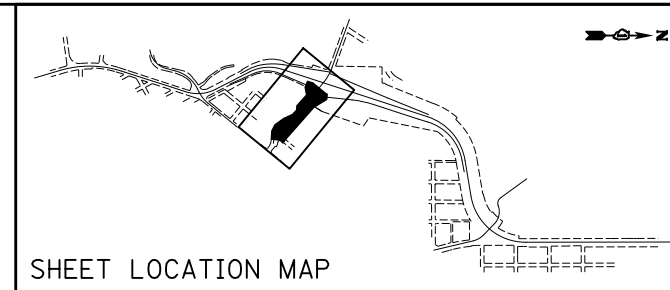


NOTES:

- FOR STATIONS, OFFSETS, RADII, DIMENSIONS, AND TAPERS IN THE INTERSECTION OF ALGONQUIN ROAD AND RAMPS A AND B, SEE SHEET NO. 352.



FOR INTERSECTION GRADING AND LAYOUT SEE DETAIL SHEET NO. 352

END IMPROVEMENT ILLINOIS ROUTE 62 STA. 68+14.20

PROP. CURVE NO. A2 PI STA. = 66+05.85 $\Delta = 22^\circ 25' 15.23''$ (RT) R = 305.00' T = 60.45' L = 119.35' E = 5.93' e = 2.00% P.C. STA. = 65+45.40 P.T. STA. = 66+64.75	PROP. CURVE NO. A3 PI STA. = 69+70.71 $\Delta = 55^\circ 11' 27.92''$ (LT) R = 295.20' T = 154.30' L = 284.36' E = 37.89' e = 2.00% P.C. STA. = 68+16.41 P.T. STA. = 71+00.77
--	--



ILLINOIS ROUTE 62

FILE NAME = ... \D160F72-shr-pln-11.dgn	USER NAME = ctb	DESIGNED - CTB	REVISED -	<b>STATE OF ILLINOIS DEPARTMENT OF TRANSPORTATION</b>	<b>PLAN</b>	O.R. RTE. 0003	SECTION 18A-2	COUNTY MCHENRY	TOTAL SHEETS 825	SHEET NO. 80	
PLOT SCALE = 100.0000' / in.	CHECKED - GAB	REVISIED -	SCALE: 1" = 50'			SHEET NO. 13 OF 15 SHEETS	STA. 59+50 TO STA. 68+14.20	CONTRACT NO. 60F72			
PLOT DATE = 5/2/2012	DATE - 5/3/2012	REVISIED -	FED. ROAD DIST. NO. 1 ILLINOIS FED. AID PROJECT								