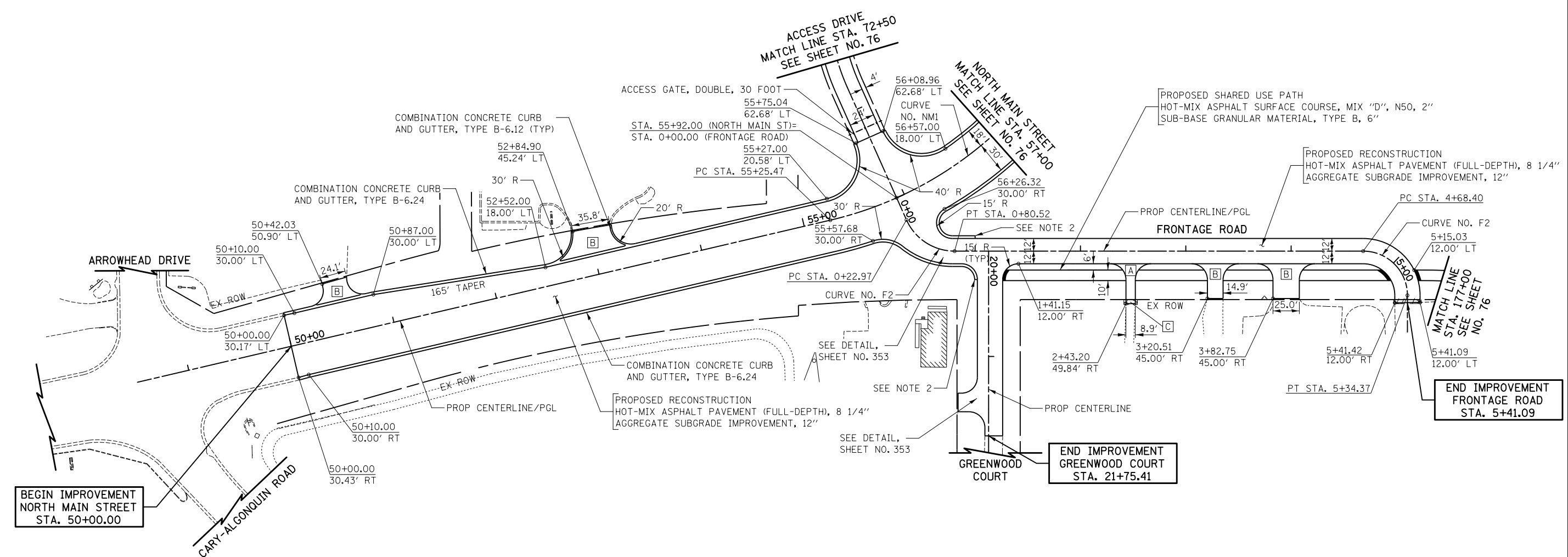
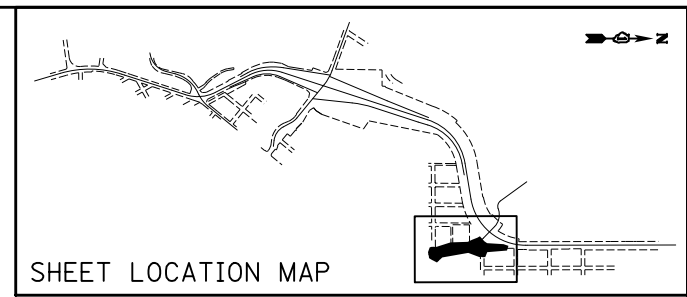


NOTES:

- ALL DRIVEWAY RADII SHALL BE 15' UNLESS OTHERWISE NOTED.
- TRANSITION CURB HEIGHT FROM 6" TO 0" OVER 10'. PAID FOR AS "COMBINATION CONCRETE CURB & GUTTER, TYPE B-6.24".



BEGIN IMPROVEMENT NORTH MAIN STREET STA. 50+00.00

END IMPROVEMENT GREENWOOD COURT STA. 21+75.41

END IMPROVEMENT FRONTAGE ROAD STA. 5+41.09

LEGEND

- [A]** RESIDENTIAL PCC DRIVEWAY
-PCC DRIVEWAY PAVEMENT, 6"
-SUB-BASE GRANULAR MATERIAL, TYPE B, 4"
- [B]** COMMERCIAL PCC DRIVEWAY
-PCC DRIVEWAY PAVEMENT, 8"
-SUB-BASE GRANULAR MATERIAL, TYPE B, 4"
- [C]** RESIDENTIAL HMA DRIVEWAY
-2" HMA SURFACE COURSE, MIX D, N50
-2 1/4" HMA BASE COURSE
-SUB-BASE GRANULAR MATERIAL, TYPE B, 4"
- [D]** COMMERCIAL HMA DRIVEWAY OR PARKING LOT
-2" HMA SURFACE COURSE, MIX D, N50
-2 1/4" HMA BASE COURSE
-SUB-BASE GRANULAR MATERIAL, TYPE B, 10"

PROP CURVE NO. NM1 PI STA. = 56+27.42 $\Delta = 32^\circ 28' 49.76''$ (LT) R = 350.01' T = 101.96' L = 198.42' E = 14.55' e = N.C. P.C. STA. = 55+25.47 P.T. STA. = 57+23.89	PROP CURVE NO. F1 PI STA. = 0+55.41 $\Delta = 65^\circ 56' 26.59''$ (LT) R = 50.00' T = 32.43' L = 57.54' E = 9.60' e = N.C. P.C. STA. = 0+22.97 P.T. STA. = 0+80.52	PROP CURVE NO. F2 PI STA. = 5+10.40 $\Delta = 90^\circ 00' 00.00''$ (RT) R = 42.00' T = 42.00' L = 65.97' E = 17.40' e = N.C. P.C. STA. = 4+68.40 P.T. STA. = 5+34.37
---	---	--

NORTH MAIN STREET
FRONTAGE ROAD
GREENWOOD COURT



FILE NAME = ... \D160F72-shd-pln-12.dgn	USER NAME = ctb	DESIGNED - CTB	REVISED -	STATE OF ILLINOIS DEPARTMENT OF TRANSPORTATION	PLAN	O.R. RTE. = 0003	SECTION = 18A-2	COUNTY = MCHENRY	TOTAL SHEETS = 825	SHEET NO. = 81		
PLOT SCALE = 100.0000' / in.	CHECKED - GAB	DATE = 5/3/2012	REVISED -			SCALE: 1" = 50'	SHEET NO. 13 OF 15 SHEETS	STA. 50+00	TO STA. 57+00	CONTRACT NO. 60F72		
PLOT DATE = 5/2/2012	DATE = 5/3/2012	REVISED -	REVISED -			FED. ROAD DIST. NO. 1 ILLINOIS FED. AID PROJECT						