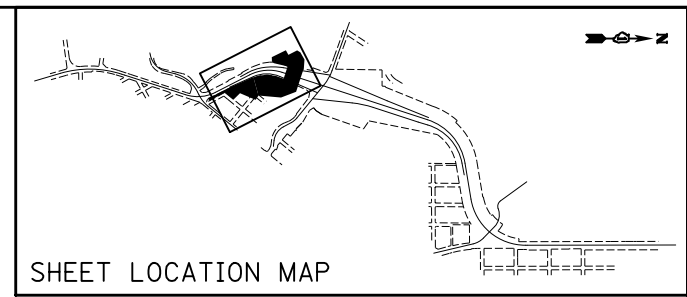
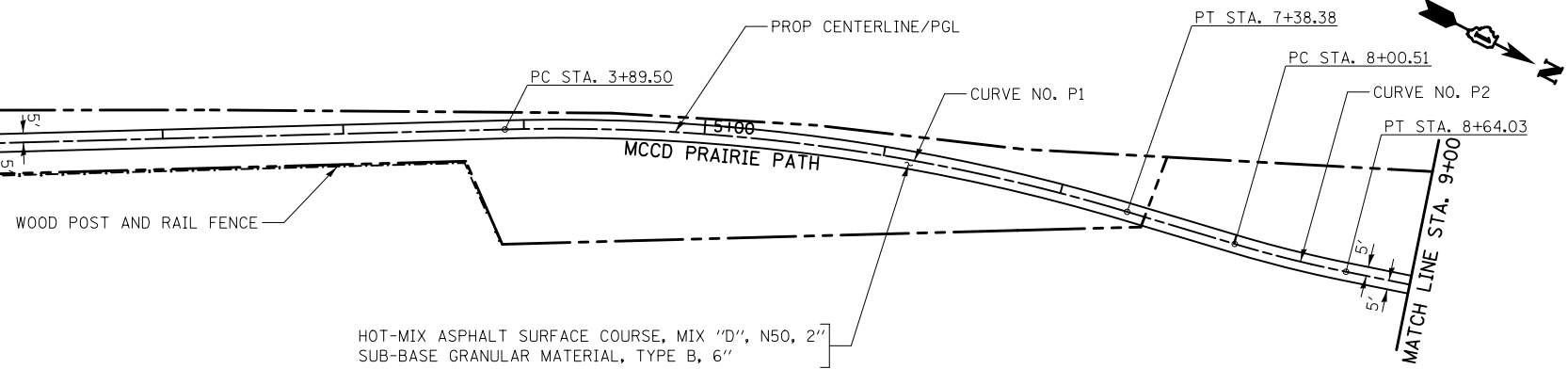
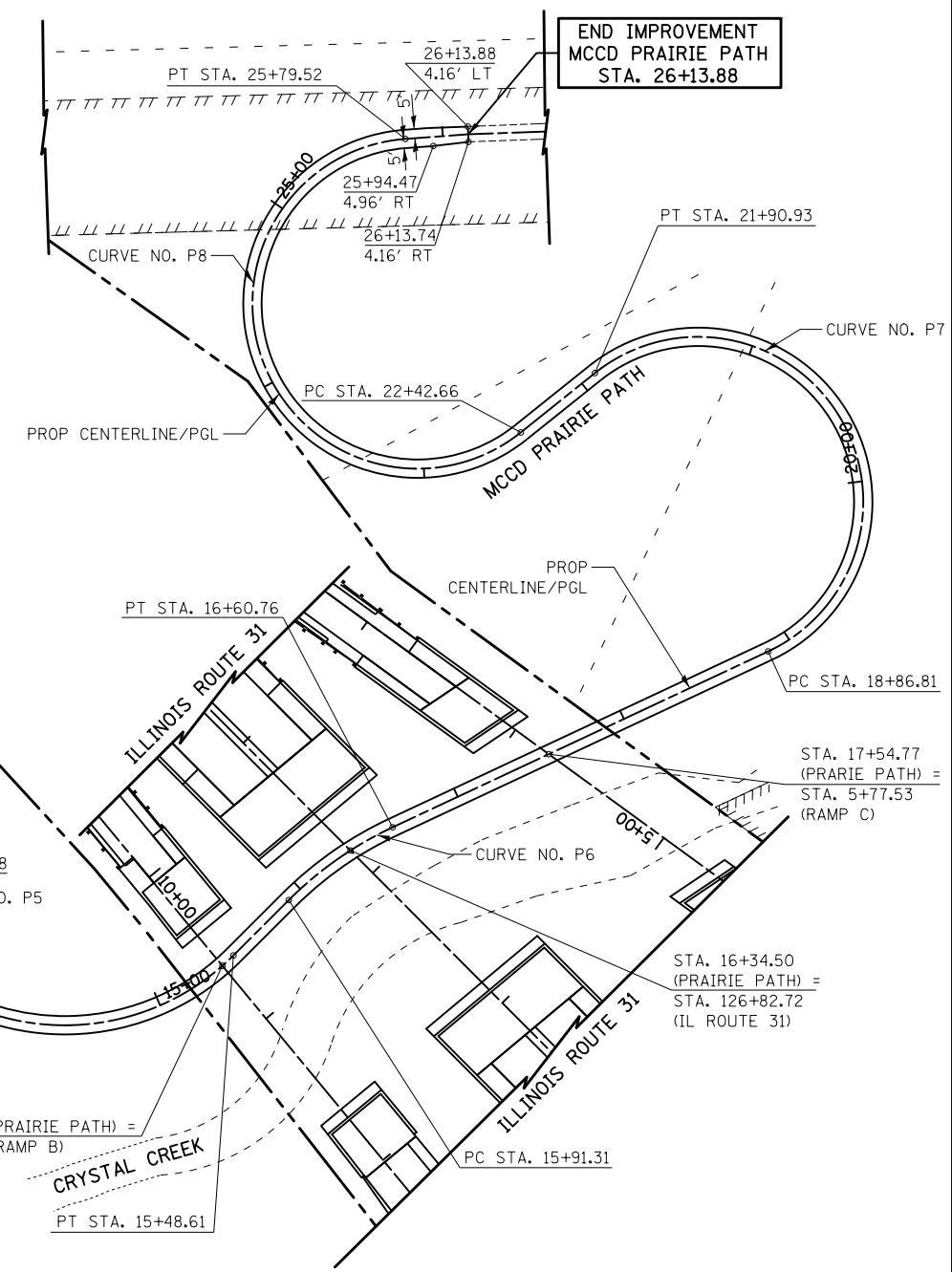


MCCD PRAIRIE PATH
MATCH LINE STA. 0+75
SEE SHEET NO. 78



HOT-MIX ASPHALT SURFACE COURSE, MIX "D", N50, 2"
SUB-BASE GRANULAR MATERIAL, TYPE B, 6"



HOT-MIX ASPHALT SURFACE COURSE, MIX "D", N50, 2"
SUB-BASE GRANULAR MATERIAL, TYPE B, 6"

<p>PROP. CURVE NO. P1 PI STA. = 5+65.42 Δ = 18° 10' 20.00" (RT) R = 1100.00' T = 175.92' L = 348.88' E = 13.98' e = 2.00% P.C. STA. = 3+89.50 P.T. STA. = 7+38.38</p>	<p>PROP. CURVE NO. P2 PI STA. = 8+32.29 Δ = 5° 11' 56.00" (LT) R = 700.00' T = 31.78' L = 63.52' E = 0.72' e = 2.00% P.C. STA. = 8+00.51 P.T. STA. = 8+64.03</p>	<p>PROP. CURVE NO. P3 PI STA. = 10+41.84 Δ = 26° 59' 08.00" (RT) R = 500.00' T = 119.97' L = 235.49' E = 14.14' e = 2.00% P.C. STA. = 9+21.86 P.T. STA. = 11+57.36</p>	<p>PROP. CURVE NO. P4 PI STA. = 12+43.38 Δ = 27° 43' 07.00" (RT) R = 100.00' T = 24.67' L = 48.38' E = 3.00' e = 2.00% P.C. STA. = 12+18.70 P.T. STA. = 12+67.08</p>	<p>PROP. CURVE NO. P5 PI STA. = 14+86.07 Δ = 111° 07' 21.00" (LT) R = 130.00' T = 189.59' L = 252.13' E = 99.87' e = 2.00% P.C. STA. = 12+96.48 P.T. STA. = 15+48.61</p>	<p>PROP. CURVE NO. P6 PI STA. = 16+26.39 Δ = 19° 53' 40.97" (RT) R = 200.00' T = 35.08' L = 69.45' E = 3.05' e = 2.00% P.C. STA. = 15+91.31 P.T. STA. = 16+60.76</p>	<p>PROP. CURVE NO. P7 PI STA. = 26+41.24 Δ = 193° 36' 21.40" (LT) R = 90.00' T = 754.43' L = 304.12' E = 849.78' e = -2.00% P.C. STA. = 18+86.81 P.T. STA. = 21+90.93</p>	<p>PROP. CURVE NO. P8 PI STA. = 25+32.94 Δ = 214° 27' 06.85" (RT) R = 90.00' T = 290.28' L = 336.86' E = 393.91' e = 2.00% P.C. STA. = 22+42.66 P.T. STA. = 25+79.52</p>
---	--	--	--	--	--	---	--

STA. 15+40.37 (PRAIRIE PATH) =
STA. 10+62.62 (RAMP B)

STA. 17+54.77 (PRAIRIE PATH) =
STA. 5+77.53 (RAMP C)

STA. 16+34.50 (PRAIRIE PATH) =
STA. 126+82.72 (IL ROUTE 31)



MCCD PRAIRIE PATH

FILE NAME = ...\\D160F72-sht-pln-14.dgn	USER NAME = ctb	DESIGNED - CTB	REVISED -	STATE OF ILLINOIS DEPARTMENT OF TRANSPORTATION	PLAN	O.R. RTE. 0003	SECTION 18A-2	COUNTY MCHENRY	TOTAL SHEETS 825	SHEET NO. 83		
PLOT SCALE = 100.0000' / in.	CHECKED - GAB	REVISIED -	REVISIED -			SCALE: 1" = 50'	SHEET NO. 15 OF 15 SHEETS	STA. 3+00	TO STA. 26+13.88	CONTRACT NO. 60F72		
PLOT DATE = 5/2/2012	DATE = 5/3/2012	REVISIED -	REVISIED -			FED. ROAD DIST. NO. 1 ILLINOIS FED. AID PROJECT						