

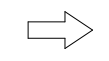






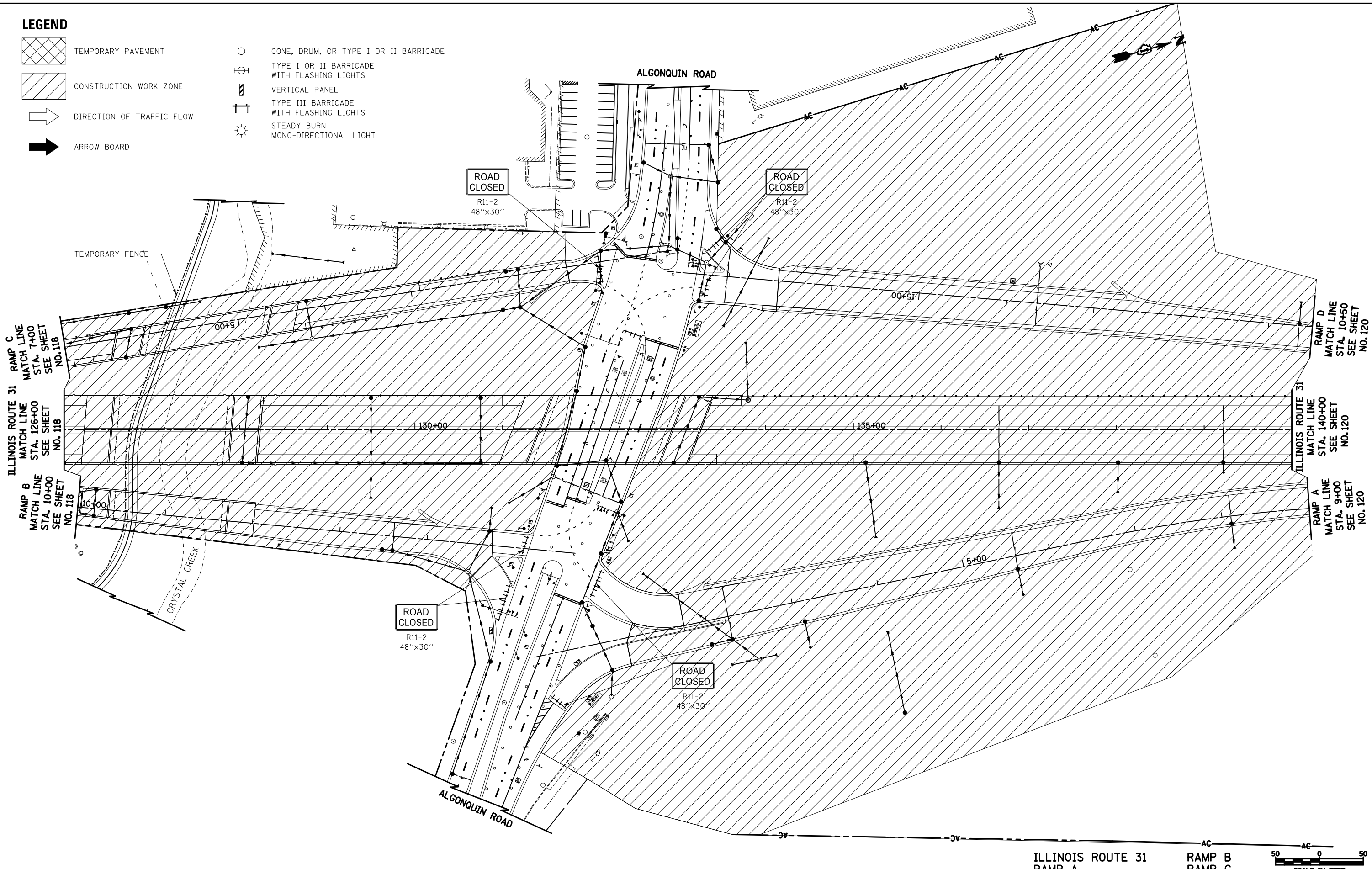


LEGEND

-  TEMPORARY PAVEMENT
-  CONSTRUCTION WORK ZONE
-  DIRECTION OF TRAFFIC FLOW
-  ARROW BOARD
-  CONE, DRUM, OR TYPE I OR II BARRICADE
-  TYPE I OR II BARRICADE WITH FLASHING LIGHTS
-  VERTICAL PANEL
-  TYPE III BARRICADE WITH FLASHING LIGHTS
-  STEADY BURN MONO-DIRECTIONAL LIGHT



ILLINOIS ROUTE 31
RAMP A

RAMP B
RAMP C



FILE NAME =
...\\08-MOT\160F72-sht-MOT-17.dgn

USER NAME = ctb
DESIGNED - KWH
DRAWN - AKW
CHECKED - GAB
DATE - 5/3/2012

REVISED -
REVISED -
REVISED -
REVISED -

**STATE OF ILLINOIS
DEPARTMENT OF TRANSPORTATION**

MAINTENANCE OF TRAFFIC - STAGE 2A

SCALE: 1" = 50' SHEET NO. 17 OF 47 SHEETS STA. 126+00 TO STA. 140+00

O.R. RTE.	SECTION	COUNTY	TOTAL SHEETS	SHEET NO.
0003	18A-2	MCHENRY	825	119
CONTRACT NO. 60F72				
FED. ROAD DIST. NO. 1 ILLINOIS FED. AID PROJECT				