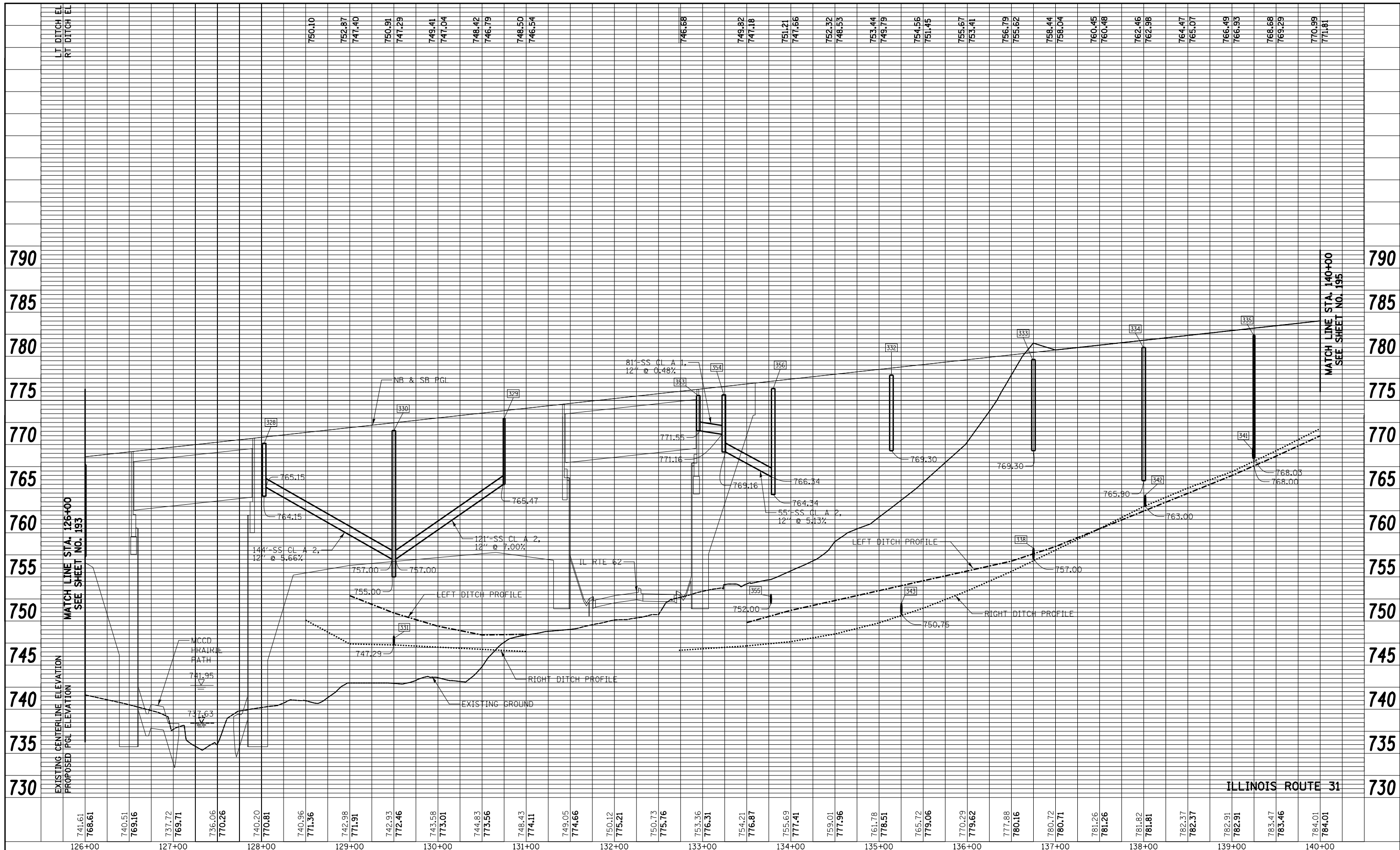
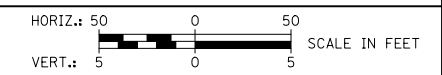


PLAN	SURVEYED	BY	DATE
	PLOTTED		
	ALIGNED		
	CHECKED		
	FILED		
	NO.		
	NO.		
	NO.		

PROFILE	SURVEYED	BY	DATE
	PLOTTED		
	GRADES CHECKED		
	STRUCTURE NOTATIONS CHECKED		
	NO.		
	NO.		
	NO.		



741.61	740.51	737.72	736.06	740.20	740.96	742.98	742.93	743.58	744.83	748.43	749.05	750.12	750.73	753.36	754.21	755.69	759.01	761.78	765.72	770.29	777.88	780.72	781.26	781.82	782.37	782.91	783.47	784.01	
126+00	127+00	128+00	129+00	130+00	131+00	132+00	133+00	134+00	135+00	136+00	137+00	138+00	139+00	140+00															



FILE NAME = ...\\D160F72-sht-dpr-prf-03.dgn

USER NAME = ctb	DESIGNED - DTE	REVISED -
PLOT SCALE = 100.0000' / in.	DRAWN - DTE	REVISED -
PLOT DATE = 5/2/2012	CHECKED - GAB	REVISED -
	DATE - 5/3/2012	REVISED -

**STATE OF ILLINOIS
DEPARTMENT OF TRANSPORTATION**

DRAINAGE AND UTILITIES PROFILE

SCALE: SHEET NO. 3 OF 19 SHEETS STA. 126+00 TO STA. 140+00

O.R. RTE.	SECTION	COUNTY	TOTAL SHEETS	SHEET NO.
0003	18A-2	MCHENRY	825	194
FED. ROAD DIST. NO. 1 ILLINOIS FED. AID PROJECT			CONTRACT NO. 60F72	