

STATE OF ILLINOIS)
 COUNTY OF COOK) S.S.

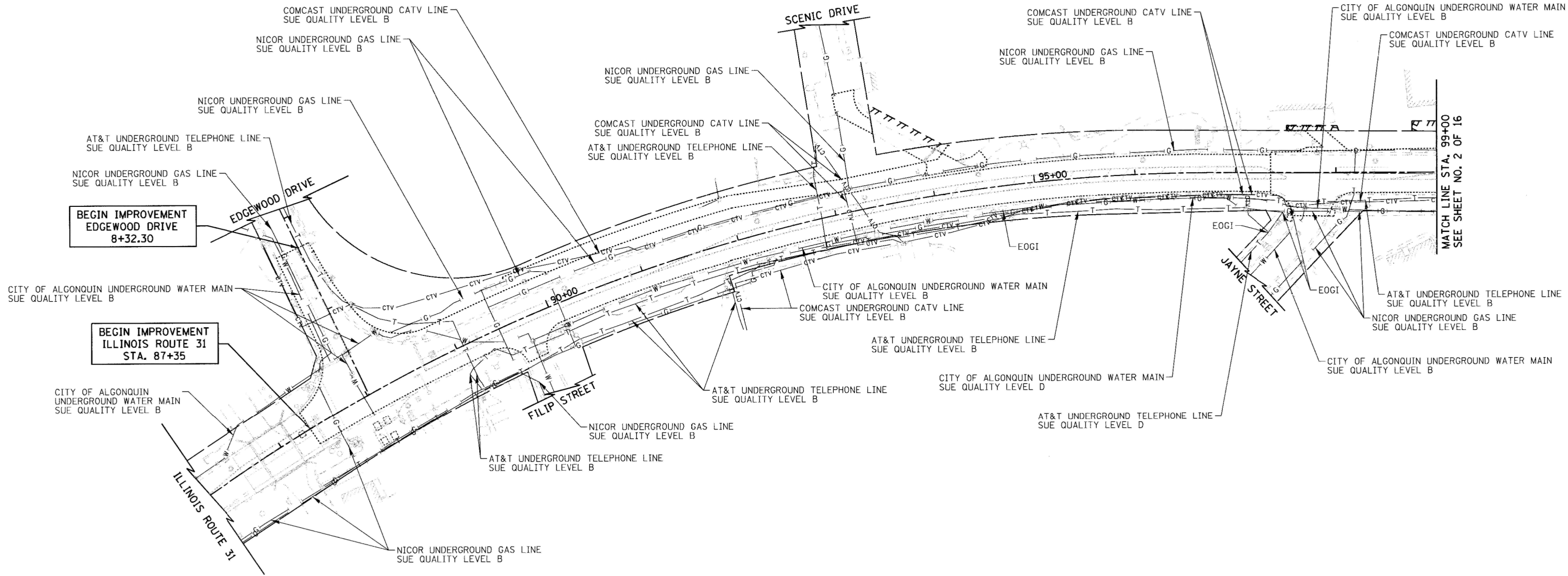
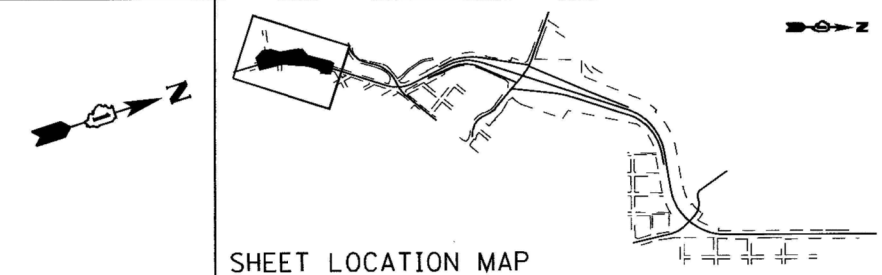
UTILITY(IES) SHOWN HEREON HAVE BEEN INVESTIGATED BY ASE IN ACCORDANCE WITH SUE INDUSTRY STANDARDS QUALITY LEVEL B (QLB). ALL OTHER INFORMATION SHOWN HAS BEEN PROVIDED BY OTHERS.

FIELD WORK WAS PERFORMED BETWEEN THE 1ST OF SEPTEMBER AND 26TH DAY OF OCTOBER, 2010.

IN WITNESS WHEREOF, I HAVE HEREUNTO SET MY HAND AND SEAL THIS 28TH DAY OF OCTOBER, 2010. CHICAGO, IL.



Steven M. Rienks
 STEVEN M. RIENKS - ILLINOIS PROFESSIONAL ENGINEER NUMBER 62-044619
 MY LICENSE EXPIRES 11/30/2011



BEGIN IMPROVEMENT
 EDGEWOOD DRIVE
 8+32.30

BEGIN IMPROVEMENT
 ILLINOIS ROUTE 31
 STA. 87+35

MATCH LINE STA. 99+00
 SEE SHEET NO. 2 OF 16

LEGEND

- T — EXISTING UNDERGROUND TELEPHONE
- W — EXISTING UNDERGROUND WATER
- E — EXISTING UNDERGROUND ELECTRIC
- G — EXISTING UNDERGROUND GAS
- CTV — EXISTING UNDERGROUND CABLE TV
- EOGI END OF GEOPHYSICAL LOCATION

NOTES:

1. HORIZONTAL CONTROL, VERTICAL CONTROL, CENTERLINE ALIGNMENT, TOPOGRAPHIC FEATURES, AND UTILITY LINE WORK (EXCEPTING SUE QUALITY LEVEL B DESIGNATIONS) WERE SUPPLIED BY ILLINOIS DEPARTMENT OF TRANSPORTATION.

AMERICAN
 SURVEYING & ENGINEERING, P.C.
 SURVEYORS - ENGINEERS
 GEODESISTS - MAPPING SCIENTISTS
 Chicago: 312-271-2000 / Fax 312-271-2002
 Dixon: 815-288-6231 / Fax 815-288-6277
 Aurora: 630-897-4105 / Fax 630-897-4121
 Illinois Professional Design Firm No. 184-003192

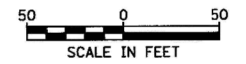
FILE NAME = ...\\geo\18180772-sh-t-SUE-01.dgn	USER NAME = #USER#	DESIGNED -	REVISED -
		DRAWN - ALS	REVISED -
		CHECKED - TS	REVISED -
		DATE - 10/19/2010	REVISED -

**STATE OF ILLINOIS
 DEPARTMENT OF TRANSPORTATION**

SUB-SURFACE UTILITY ENGINEERING

SCALE: 1" = 50' SHEET NO. 1 OF 16 SHEETS STA. 87+35 TO STA. 99+00

ILLINOIS ROUTE 31
 EDGEWOOD DRIVE



F.A.P. RTE. 0003	SECTION 18A-2	COUNTY MCHENRY	TOTAL SHEETS 825	SHEET NO. 213
CONTRACT NO. 60F72				
FED. ROAD DIST. NO. 1 ILLINOIS FED. AID PROJECT				