

O.R. RTE.	SECTION	COUNTY	TOTAL SHEETS	SHEET NO.
0003	18A-2	MCHENRY	825	229
FED. ROAD DIST. NO. 1	ILLINOIS	CONTRACT NO. 60F72		

VOLUME II

FOR INDEX OF SHEETS, SEE SHEET NO. 230

SUBSURFACE UTILITY ENGINEERING (S.U.E.)  
UTILIZED ON THIS PROJECT

**PROJECT LOCATED IN THE  
VILLAGE OF ALGONQUIN**

**DESIGN DESIGNATION**

34,000(30) OTHER PRINCIPAL ARTERIAL 6.03 (PCC-20)

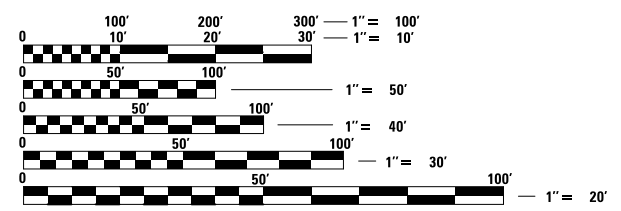
**TRAFFIC DATA**

	ADT (2030)	DESIGN SPEED	POSTED SPEED
IL ROUTE 31 (EDGEWOOD DRIVE TO HUNTINGTON DRIVE)	26,000	40 MPH	35 MPH
IL ROUTE 31 (HUNTINGTON DRIVE TO IL ROUTE 62)	16,000	40 MPH	40 MPH
IL ROUTE 31 (IL ROUTE 62 TO CARY-ALGONQUIN ROAD)	34,000	50 MPH	45 MPH
IL ROUTE 31 (CARY-ALGONQUIN ROAD TO KLASEN ROAD)	43,000	50 MPH	45 MPH
EDGEWOOD DRIVE	9,000	35 MPH	30 MPH
HUNTINGTON DRIVE	7,000	35 MPH	30 MPH
IL ROUTE 62 (EAST OF PROPOSED IL ROUTE 31)	48,000	35 MPH	30 MPH
IL ROUTE 62 (WEST OF PROPOSED IL ROUTE 31)	32,000	35 MPH	30 MPH

STATE OF ILLINOIS  
DEPARTMENT OF TRANSPORTATION  
DIVISION OF HIGHWAYS

**PROPOSED  
HIGHWAY PLANS**

O.R. ROUTE 0003 (ALGONQUIN BYPASS)  
SECTION 18A-2  
ILLINOIS ROUTE 31 (N. JCT) TO ILLINOIS ROUTE 31 (S. JCT)  
PROJECT NO.:  
**NEW CONSTRUCTION, BRIDGE (NEW), RETAINING WALL  
McHENRY COUNTY**

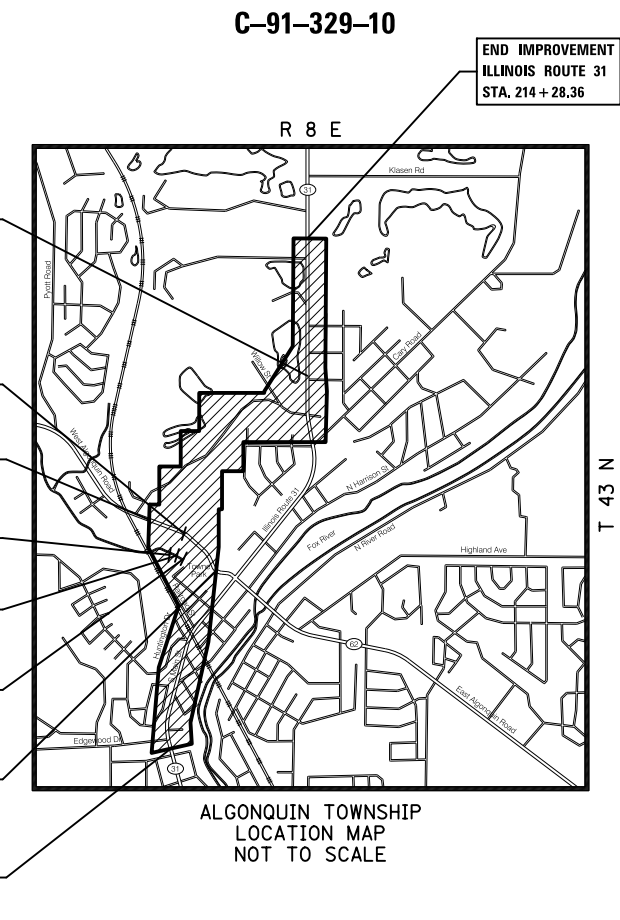


FULL SIZE PLANS HAVE BEEN PREPARED USING STANDARD ENGINEERING SCALES. REDUCED SIZED PLANS WILL NOT CONFORM TO STANDARD SCALES. IN MAKING MEASUREMENTS ON REDUCED PLANS, THE ABOVE SCALES MAY BE USED.

J.U.L.I.E.  
JOINT UTILITY LOCATION INFORMATION FOR EXCAVATION  
1-800-892-0123  
OR 811

DISTRICT ONE - DESIGN  
PROJECT MANAGER: ISAAC KWARTENG (847) 705-4230  
PROJECT ENGINEER: ALIX BRICE (847) 705-4552

CONTRACT NO. 60F72



GROSS LENGTH = 11,153.55 FT. = 2.112 MILES  
NET LENGTH = 11,153.55 FT. = 2.112 MILES

PLANS PREPARED BY:  
**CIVILTECH**  
450 E. Devon Ave, Suite 300 - Itasca, Illinois 60143  
Tel: 630.773.3900 - Fax: 630.773.3975  
www.civiltechinc.com



LOCATION OF SECTION INDICATED THIS: - [black rectangle] -

STATE OF ILLINOIS  
DEPARTMENT OF TRANSPORTATION  
DIVISION OF HIGHWAYS

SUBMITTED \_\_\_\_\_ 20 \_\_\_\_\_  
DEPUTY DIRECTOR OF HIGHWAYS, REGION ENGINEER

\_\_\_\_\_ 20 \_\_\_\_\_  
ENGINEER OF DESIGN AND ENVIRONMENT

\_\_\_\_\_ 20 \_\_\_\_\_  
DIRECTOR OF HIGHWAYS, CHIEF ENGINEER

**PRINTED BY THE AUTHORITY  
OF THE STATE OF ILLINOIS**