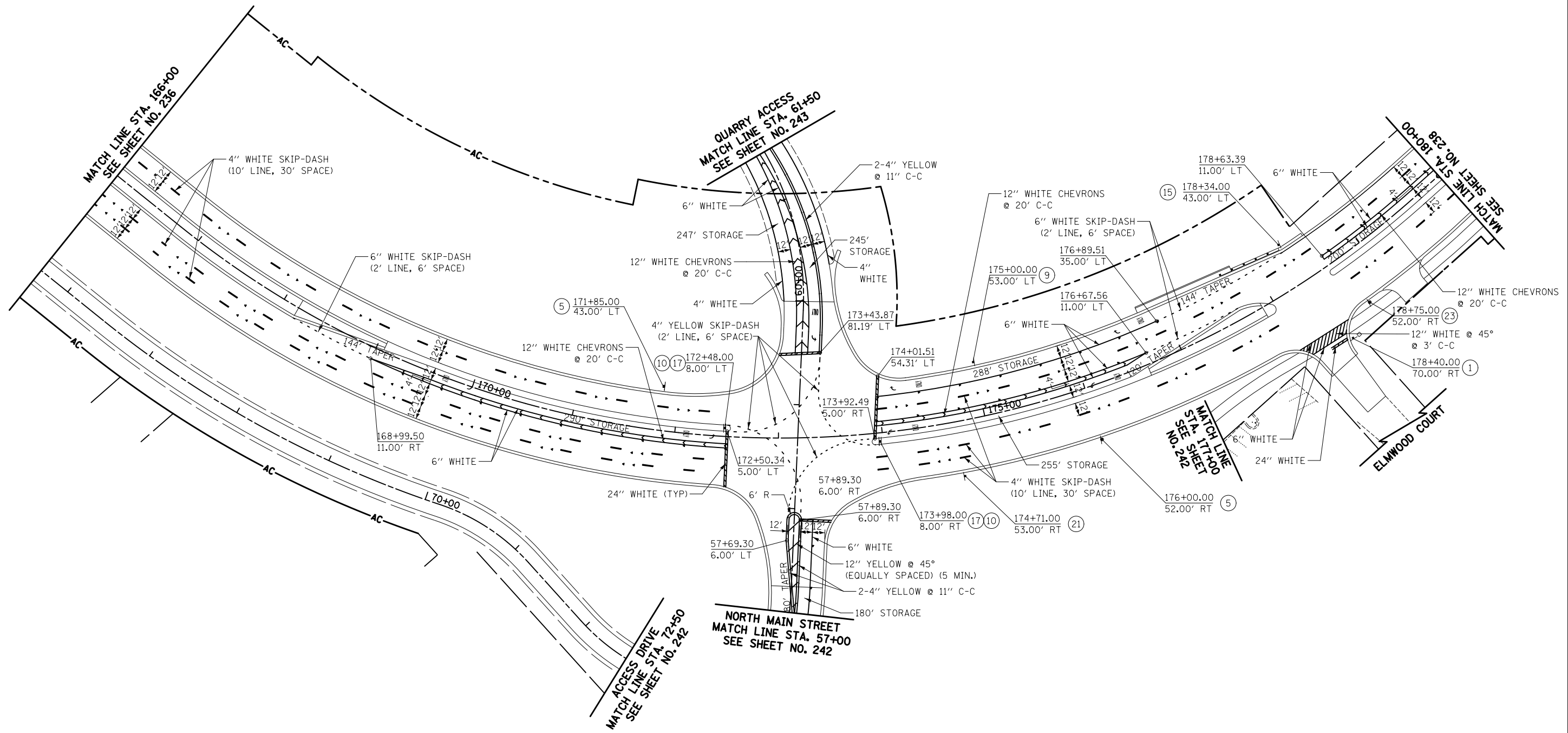
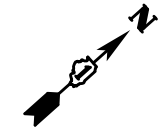


LEGEND

- ◀ ONE-WAY CRYSTAL RAISED REFLECTIVE PAVEMENT MARKER
- ◀ ONE-WAY AMBER RAISED REFLECTIVE PAVEMENT MARKER
- ◆ TWO-WAY AMBER RAISED REFLECTIVE PAVEMENT MARKER



NOTE:
 -ALL PERMANENT PAVEMENT MARKINGS ON HMA SURFACES SHALL BE THERMOPLASTIC
 -ALL PERMANENT PAVEMENT MARKINGS ON CONCRETE SURFACES SHALL BE POLYUREA, TYPE 1
 -ALL PERMANENT PAVEMENT MARKINGS ON MCCD TRAIL AND PARKING LOTS SHALL BE PAINT

ILLINOIS ROUTE 31
 QUARRY ACCESS
 NORTH MAIN STREET



FILE NAME = ... \D160F72-sh-t-pmk-07.dgn	USER NAME = akw	DESIGNED - CTB	REVISED -	STATE OF ILLINOIS DEPARTMENT OF TRANSPORTATION	PAVEMENT MARKING PLAN			O.R. RTE.	SECTION	COUNTY	TOTAL SHEETS	SHEET NO.
	PLOT SCALE = 100.0000' / 1in.	DRAWN - CTB	REVISED -		0003	18A-2	MCHENRY	825	237			
	PLOT DATE = 5/2/2012	CHECKED - GAB	REVISED -		CONTRACT NO. 60F72							
		DATE - 5/3/2012	REVISED -		FED. ROAD DIST. NO. 1 ILLINOIS FED. AID PROJECT							