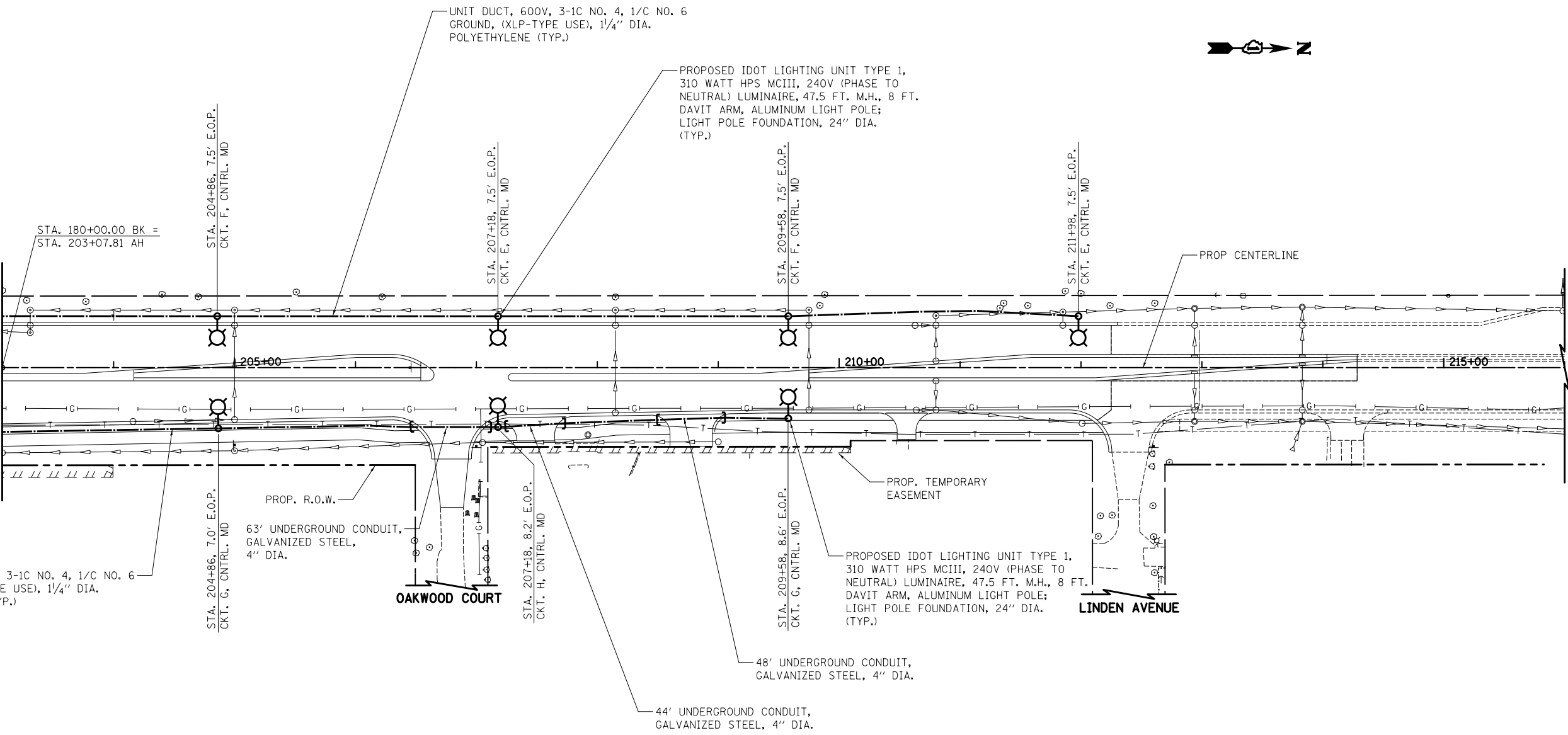


MATCH LINE STA. 180+00
SEE SHEET NO. 304



UNIT DUCT, 600V, 3-1C NO. 4, 1/C NO. 6
GROUND, (XLP-TYPE USE), 1 1/4" DIA.
POLYETHYLENE (TYP.)

UNIT DUCT, 600V, 3-1C NO. 4, 1/C NO. 6
GROUND, (XLP-TYPE USE), 1 1/4" DIA.
POLYETHYLENE (TYP.)

PROPOSED IDOT LIGHTING UNIT TYPE 1,
310 WATT HPS MCIII, 240V (PHASE TO
NEUTRAL) LUMINAIRE, 47.5 FT. M.H., 8 FT.
DAVIT ARM, ALUMINUM LIGHT POLE;
LIGHT POLE FOUNDATION, 24" DIA.
(TYP.)

PROP. R.O.W.
63' UNDERGROUND CONDUIT,
GALVANIZED STEEL,
4" DIA.

OAKWOOD COURT

PROP. TEMPORARY
EASEMENT

PROPOSED IDOT LIGHTING UNIT TYPE 1,
310 WATT HPS MCIII, 240V (PHASE TO
NEUTRAL) LUMINAIRE, 47.5 FT. M.H., 8 FT.
DAVIT ARM, ALUMINUM LIGHT POLE;
LIGHT POLE FOUNDATION, 24" DIA.
(TYP.)

LINDEN AVENUE

48' UNDERGROUND CONDUIT,
GALVANIZED STEEL, 4" DIA.

44' UNDERGROUND CONDUIT,
GALVANIZED STEEL, 4" DIA.

ILLINOIS ROUTE 31



FILE NAME =
... \D160F72-sht-light-07.dgn
CIVILTECH

USER NAME = okw
PLOT SCALE = 100.0000' / in.
PLOT DATE = 5/2/2012

DESIGNED - SJC
DRAWN - SJC
CHECKED - DNM
DATE - 5/3/2012

REVISED -
REVISED -
REVISED -
REVISED -

STATE OF ILLINOIS
DEPARTMENT OF TRANSPORTATION

LIGHTING PLAN

SCALE: 1" = 50' SHEET NO. 8 OF 31 SHEETS STA. 180+00 TO STA. 216+00

O.R. RTE.	SECTION	COUNTY	TOTAL SHEETS	SHEET NO.
0003	18A-2	MCHENRY	825	305
CONTRACT NO. 60F72				
FED. ROAD DIST. NO. 1 ILLINOIS FED. AID PROJECT				