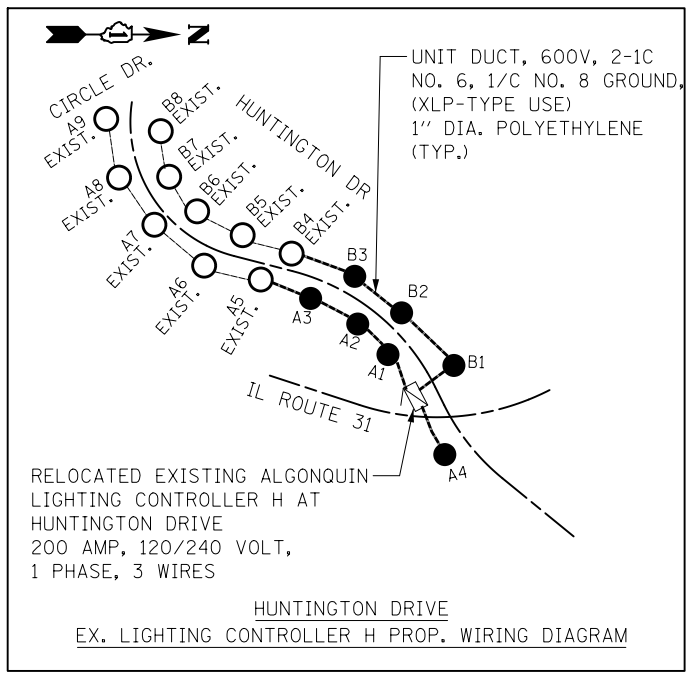


LEGEND

- PROPOSED ALGONQUIN LUMINAIRE (FUSE SIZES: 150W = 5 AMPS, 96W = 5 AMPS, 70W = 3 AMPS, 35W = 3 AMPS)
 - EXISTING ALGONQUIN LUMINAIRE
 - ⊕ EXISTING ALGONQUIN LUMINAIRE WITH FESTOON OUTLET
 - PROPOSED ALGONQUIN UNDERPASS LUMINAIRE (FUSE SIZES: 70W = 3 AMPS, 50W = 3 AMPS)
 - PROPOSED WIRING OF LUMINAIRE
 - ▣ PROPOSED ALGONQUIN LIGHTING CONTROLLER 120/240 v, 1 PHASE, 3 WIRE
 - ▢ EXISTING LIGHTING CONTROLLER (OWNER AS NOTED) 120/240 v, 1 PHASE, 3 WIRE
- LIGHTING CONTROLLER
 POLE NUMBER
 2A2
 CIRCUIT
- SUBPANEL LIGHTING CONTROLLER
 POLE NUMBER
 S12
 CIRCUIT

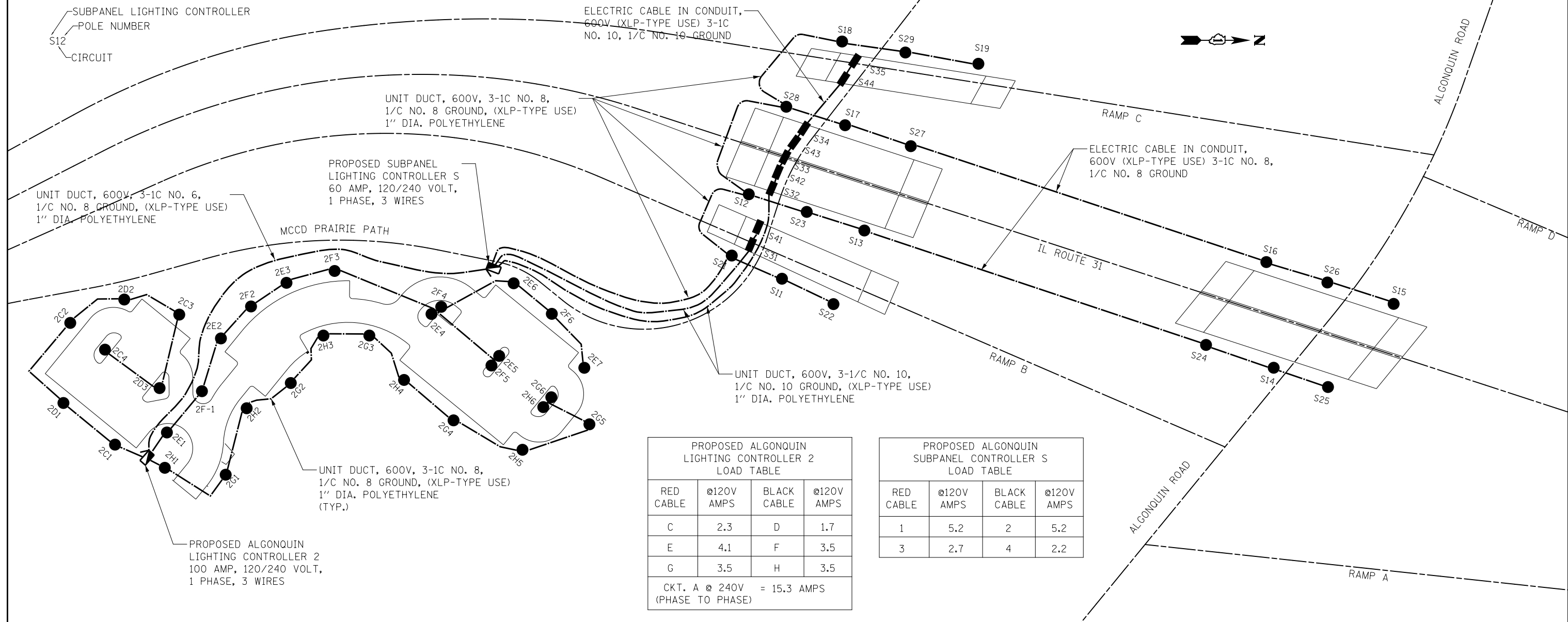
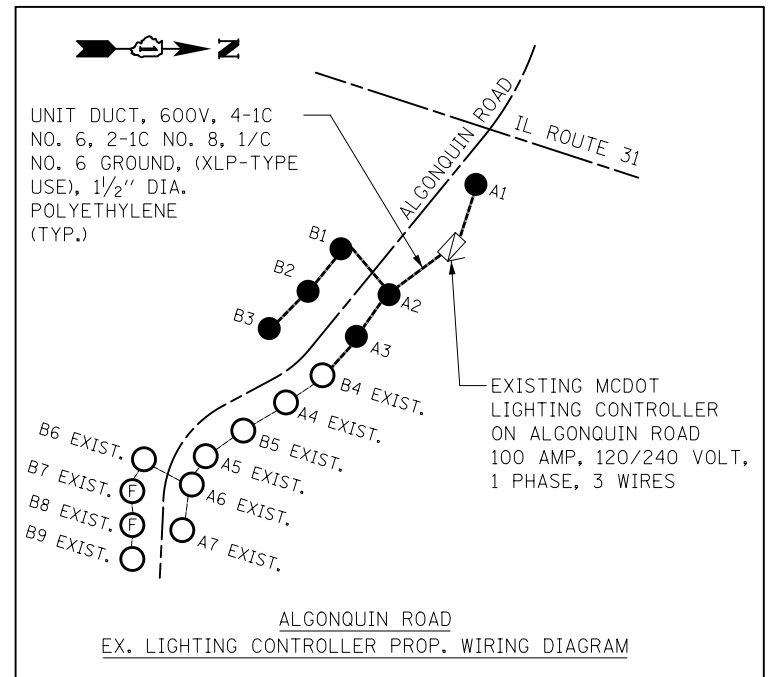


EXISTING ALGONQUIN LIGHTING CONTROLLER HUNTINGTON DRIVE LOAD TABLE

CIRCUIT	@240V AMPS	CIRCUIT	@240V AMPS
A	12.7	B	11.4

EXISTING ALGONQUIN LIGHTING CONTROLLER ALGONQUIN ROAD LOAD TABLE

RED/BLACK CABLES	@240V AMPS	BLUE/YELLOW CABLES	@240V AMPS
A	13.2	B	13.8
B FESTOON AT 120V (BLACK/WHITE CABLES)			10.0



PROPOSED ALGONQUIN LIGHTING CONTROLLER 2 LOAD TABLE

RED CABLE	@120V AMPS	BLACK CABLE	@120V AMPS
C	2.3	D	1.7
E	4.1	F	3.5
G	3.5	H	3.5

CKT. A @ 240V = 15.3 AMPS (PHASE TO PHASE)

PROPOSED ALGONQUIN SUBPANEL CONTROLLER S LOAD TABLE

RED CABLE	@120V AMPS	BLACK CABLE	@120V AMPS
1	5.2	2	5.2
3	2.7	4	2.2

FILE NAME = ...\\D160F72-sht-light-14_diagram 2.dgn	USER NAME = okw	DESIGNED - SJC	REVISED -
		DRAWN - SJC	REVISED -
		CHECKED - DNM	REVISED -
		DATE - 5/3/2012	REVISED -

**STATE OF ILLINOIS
DEPARTMENT OF TRANSPORTATION**

**PROPOSED WIRING DIAGRAM
VILLAGE OF ALGONQUIN LIGHTING CONTROLLER 2 AND SUBPANEL**

SCALE: N.T.S. SHEET NO. 15 OF 31 SHEETS STA. TO STA.

F.A. RTE.	SECTION	COUNTY	TOTAL SHEETS	SHEET NO.
860	18A-2	MCHENRY	825	312
CONTRACT NO. 60F72				
ILLINOIS FED. AID PROJECT				