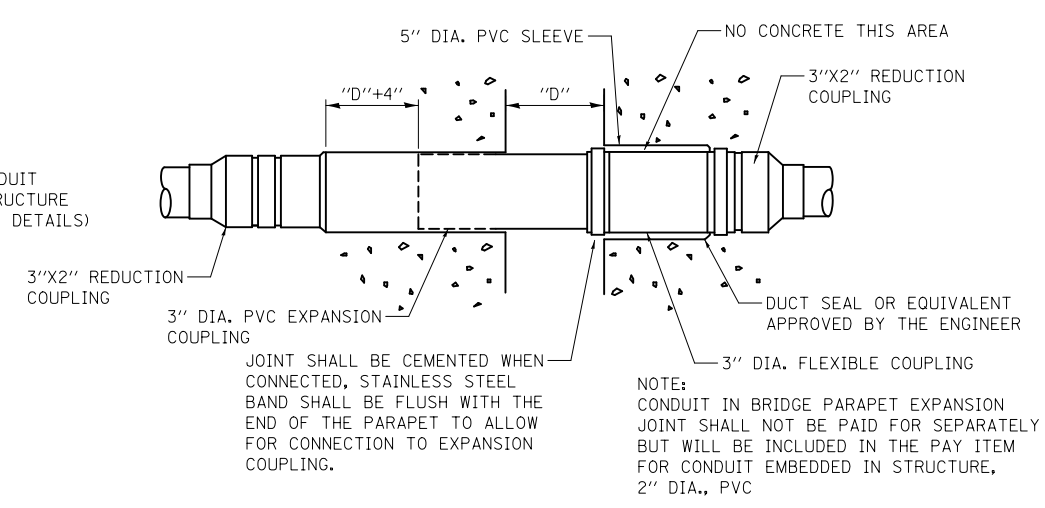


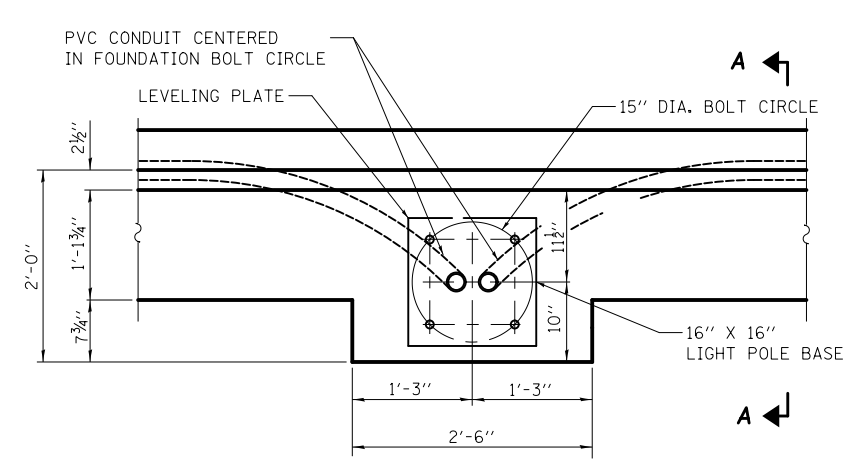
**NOTE:**  
 JUNCTION BOX AND CONDUITS EMBEDDED IN STRUCTURE MUST BE SEPARATED FOR THE VILLAGE OF ALGONQUIN AND IDOT LIGHTING SYSTEM.

**JUNCTION BOX EMBEDDED IN PARAPET OR BARRIER WALL**

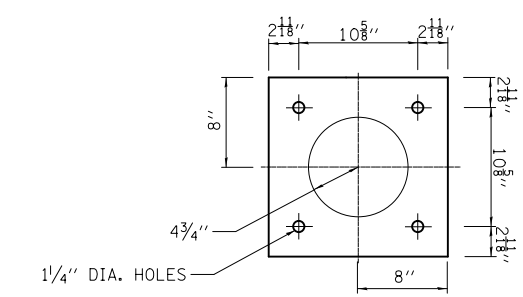


**INSTALLATION OF CONDUIT IN BRIDGE PARAPET EXPANSION JOINT**

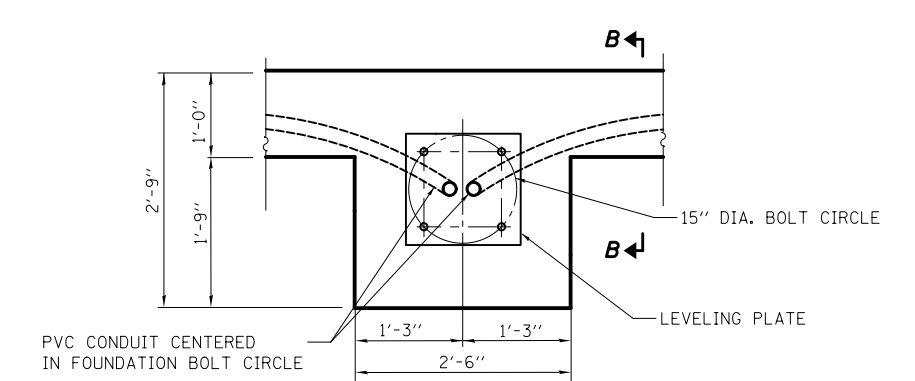
**NOTE:**  
 CONDUIT IN BRIDGE PARAPET EXPANSION JOINT SHALL NOT BE PAID FOR SEPARATELY BUT WILL BE INCLUDED IN THE PAY ITEM FOR CONDUIT EMBEDDED IN STRUCTURE, 2" DIA., PVC



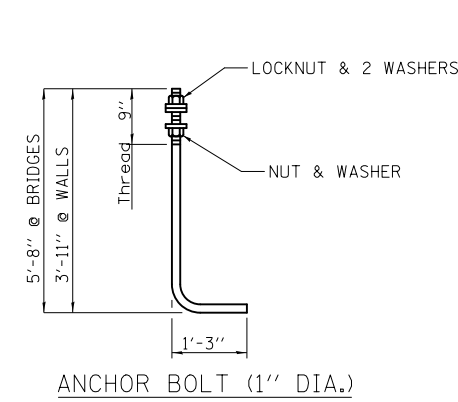
**LIGHT POLE FOUNDATION MOUNTED ON BRIDGE OR CONCRETE PARAPET WALL**



**LEVELING PLATE DETAIL**

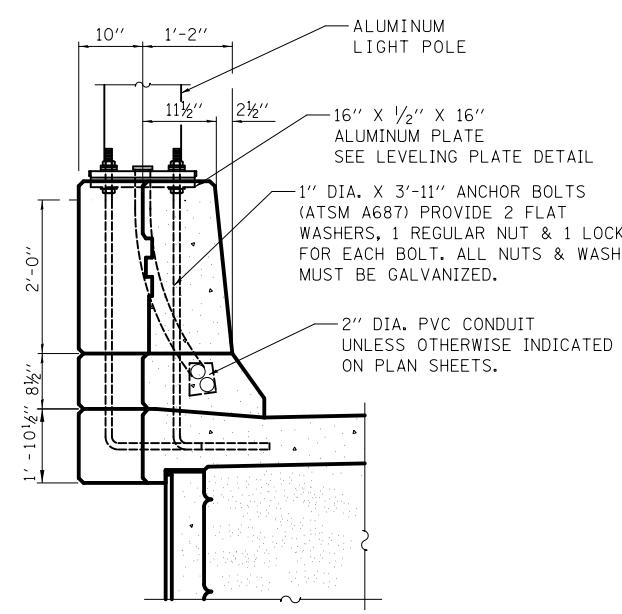


**LIGHT POLE FOUNDATION MOUNTED ON WALL K (ALGONQUIN ROAD)**

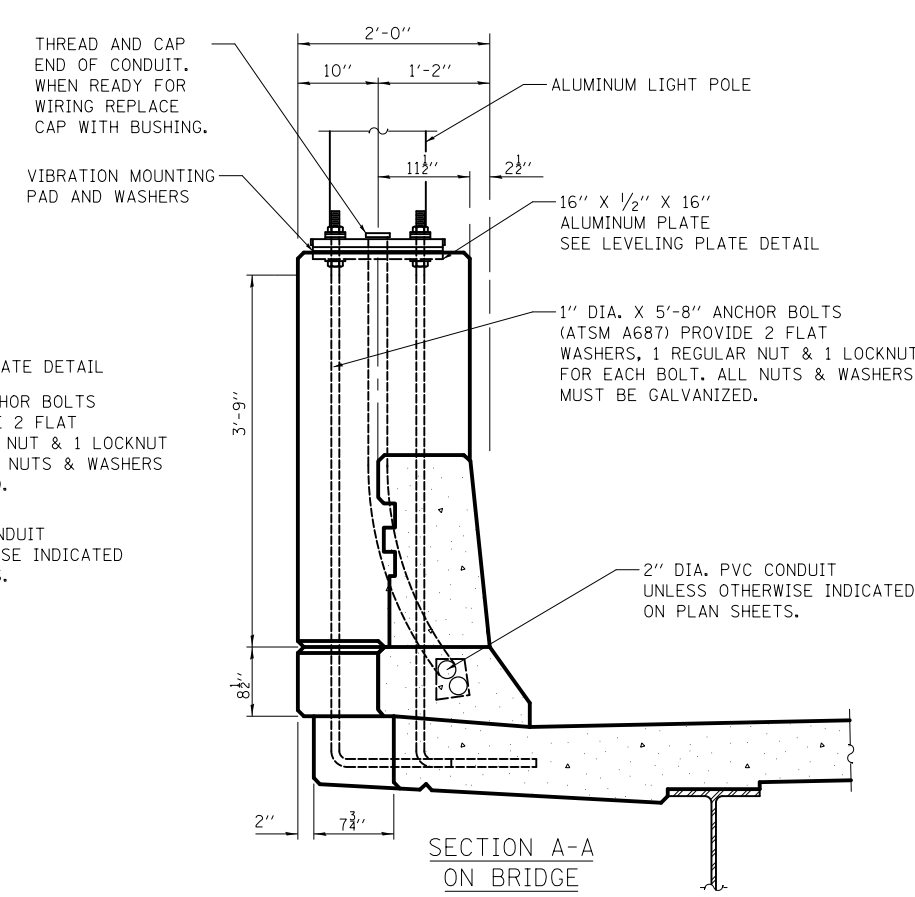


**ANCHOR BOLT (1" DIA.)**

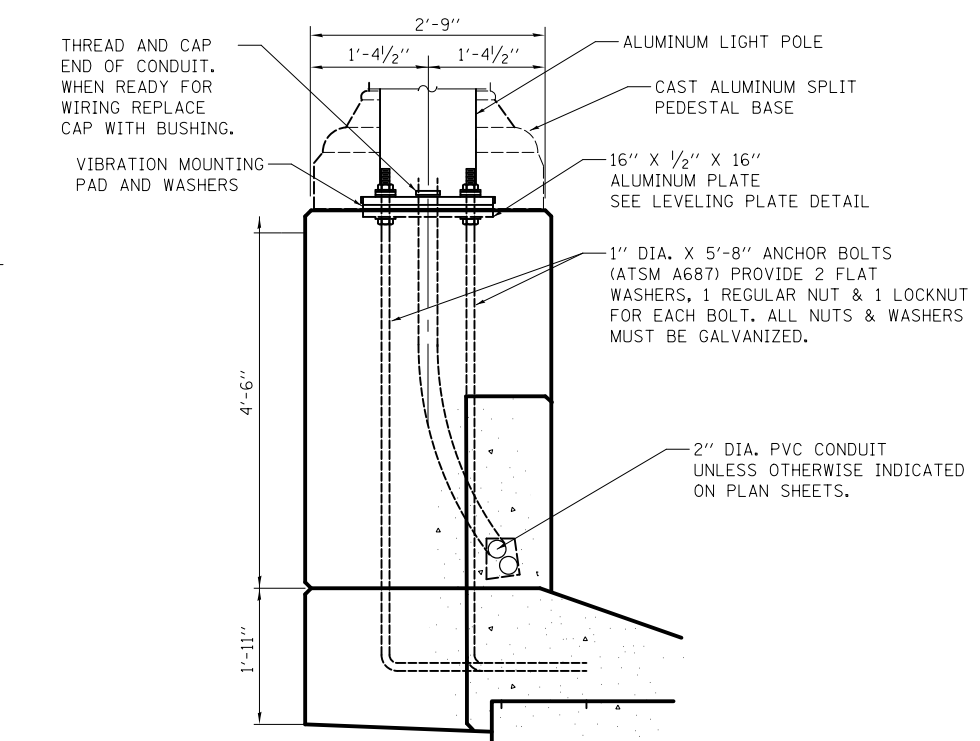
- NOTES:**
1. ALL DIMENSIONS ARE IN INCHES UNLESS OTHERWISE SHOWN.
  2. LEVEL LIGHT POLE PLATES, USING THE FLANGE NUTS, PRIOR TO POURING THE PARAPET WALL. THE TOP OF THE PLATE SHALL BE AT THE SAME ELEVATION AS THE FINISHED CONCRETE.
  3. THE COST OF ANCHOR BOLTS IS INCLUDED IN THE COST OF CONCRETE SUPERSTRUCTURES.



**SECTION A-A ON CONCRETE PARAPET WALL**



**SECTION A-A ON BRIDGE**



**SECTION B-B ON WALL K (ALGONQUIN ROAD)**