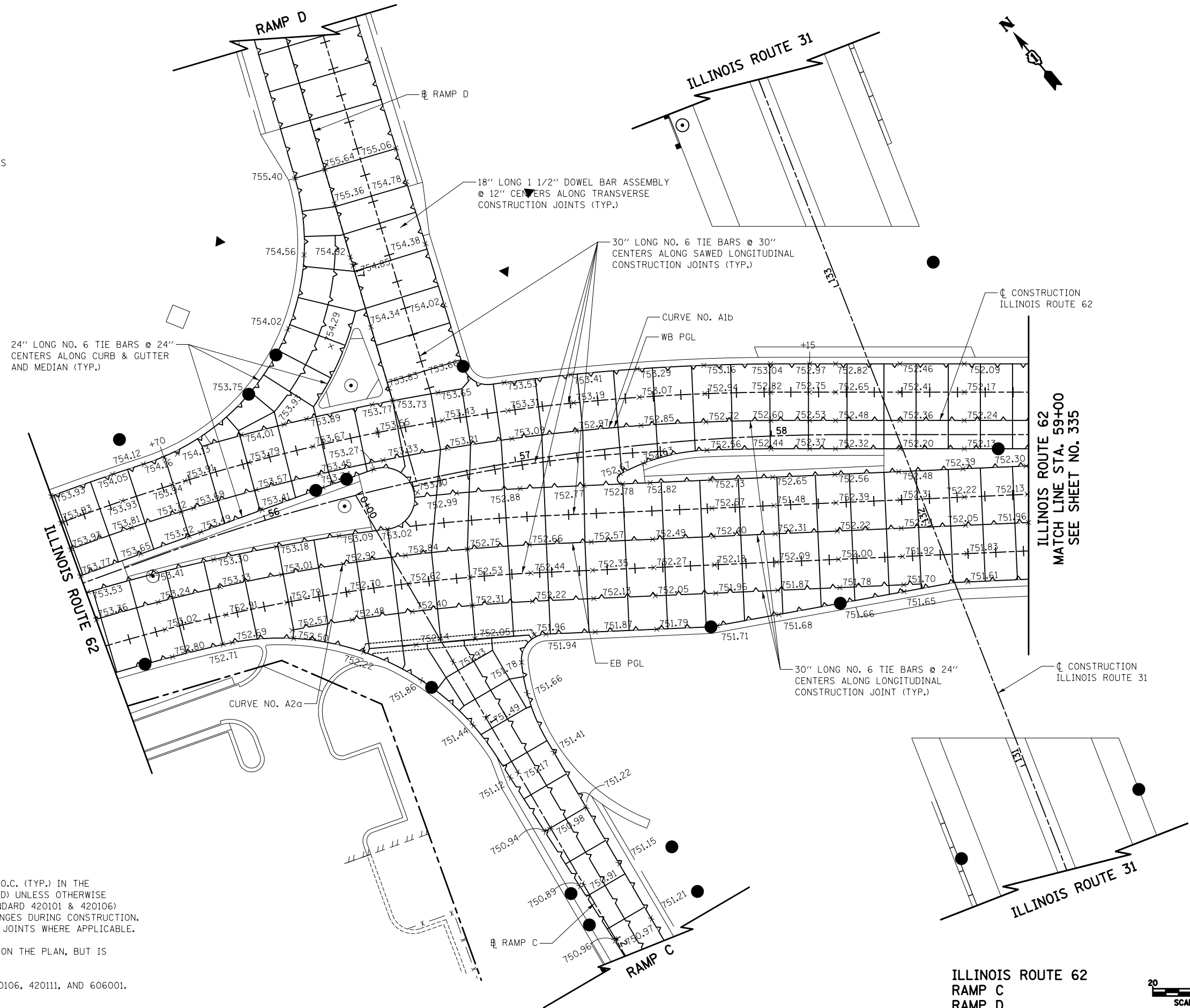


LEGEND

- (XXX.XX) EXISTING PAVEMENT ELEVATION
- XXX.XX PROPOSED PAVEMENT ELEVATION
- |—|—|—|—|— CONSTRUCTION JOINT WITH TIE BARS
- +---+---+---+---+ SAWED JOINT WITH TIE BARS
- |—|—|—|—|— CONSTRUCTION JOINT WITH DOWEL BARS
- |—|—|—|—|— EXPANSION JOINT WITH DOWEL BARS



24" LONG NO. 6 TIE BARS @ 24" CENTERS ALONG CURB & GUTTER AND MEDIAN (TYP.)

18" LONG 1 1/2" DOWEL BAR ASSEMBLY @ 12" CENTERS ALONG TRANSVERSE CONSTRUCTION JOINTS (TYP.)

30" LONG NO. 6 TIE BARS @ 30" CENTERS ALONG SAWED LONGITUDINAL CONSTRUCTION JOINTS (TYP.)

CURVE NO. A1b
WB PGL

CL CONSTRUCTION ILLINOIS ROUTE 62

ILLINOIS ROUTE 62
MATCH LINE STA. 59+00
SEE SHEET NO. 335

30" LONG NO. 6 TIE BARS @ 24" CENTERS ALONG LONGITUDINAL CONSTRUCTION JOINT (TYP.)

CL CONSTRUCTION ILLINOIS ROUTE 31

NOTES

1. TRANSVERSE DOWELED JOINTS SHALL BE SPACED AT 15' O.C. (TYP.) IN THE PORTLAND CEMENT CONCRETE PAVEMENT, 9 3/4" (JOINTED) UNLESS OTHERWISE NOTED. JOINT LAYOUT MAY BE MODIFIED (± 3' PER STANDARD 420101 & 420106) UPON APPROVAL BY THE ENGINEER TO INCORPORATE CHANGES DURING CONSTRUCTION. ROADWAY JOINTS SHALL LINE UP WITH ANCHORAGE SLAB JOINTS WHERE APPLICABLE.
2. REINFORCING STEEL IS NOT SHOWN ALONG EVERY JOINT ON THE PLAN, BUT IS INTENDED TO BE PLACED ALONG EACH JOINT AS NOTED.
3. REFERENCE IDOT STANDARD DETAILS 420001, 420101, 420106, 420111, AND 606001.
4. FOR SUPERELEVATION TABLE SEE SHEET NO. 344.

ILLINOIS ROUTE 62
RAMP C
RAMP D



FILE NAME =
...\\D160F72-sht-grading-06.dgn

USER NAME = akw	DESIGNED - GAB	REVISED -
PLOT SCALE = 40.0000' / in.	DRAWN - CTB	REVISED -
PLOT DATE = 5/2/2012	CHECKED - GAB	REVISED -
	DATE - 5/3/2012	REVISED -

**STATE OF ILLINOIS
DEPARTMENT OF TRANSPORTATION**

JOINTING & GRADING PLAN

SCALE: 1" = 20' SHEET NO. 6 OF 16 SHEETS STA. TO STA.

O.R. RTE.	SECTION	COUNTY	TOTAL SHEETS	SHEET NO.
0003	18A-2	MCHENRY	825	334
CONTRACT NO. 60F72				
FED. ROAD DIST. NO. 1 ILLINOIS FED. AID PROJECT				