

LEGEND

- (XXX.XX) EXISTING PAVEMENT ELEVATION
- XXX.XX PROPOSED PAVEMENT ELEVATION
- |—|—|— CONSTRUCTION JOINT WITH TIE BARS
- +—+—+— SAWED JOINT WITH TIE BARS
- |—|—|— CONSTRUCTION JOINT WITH DOWEL BARS
- |—|—|— EXPANSION JOINT WITH DOWEL BARS

ELEVATIONS SHOWN ON RAMP A ARE SPACED 25' APART ALONG THE WESTERN CURVE.

30" LONG NO. 6 TIE BARS @ 30" CENTERS ALONG SAWED LONGITUDINAL CONSTRUCTION JOINTS (TYP.)

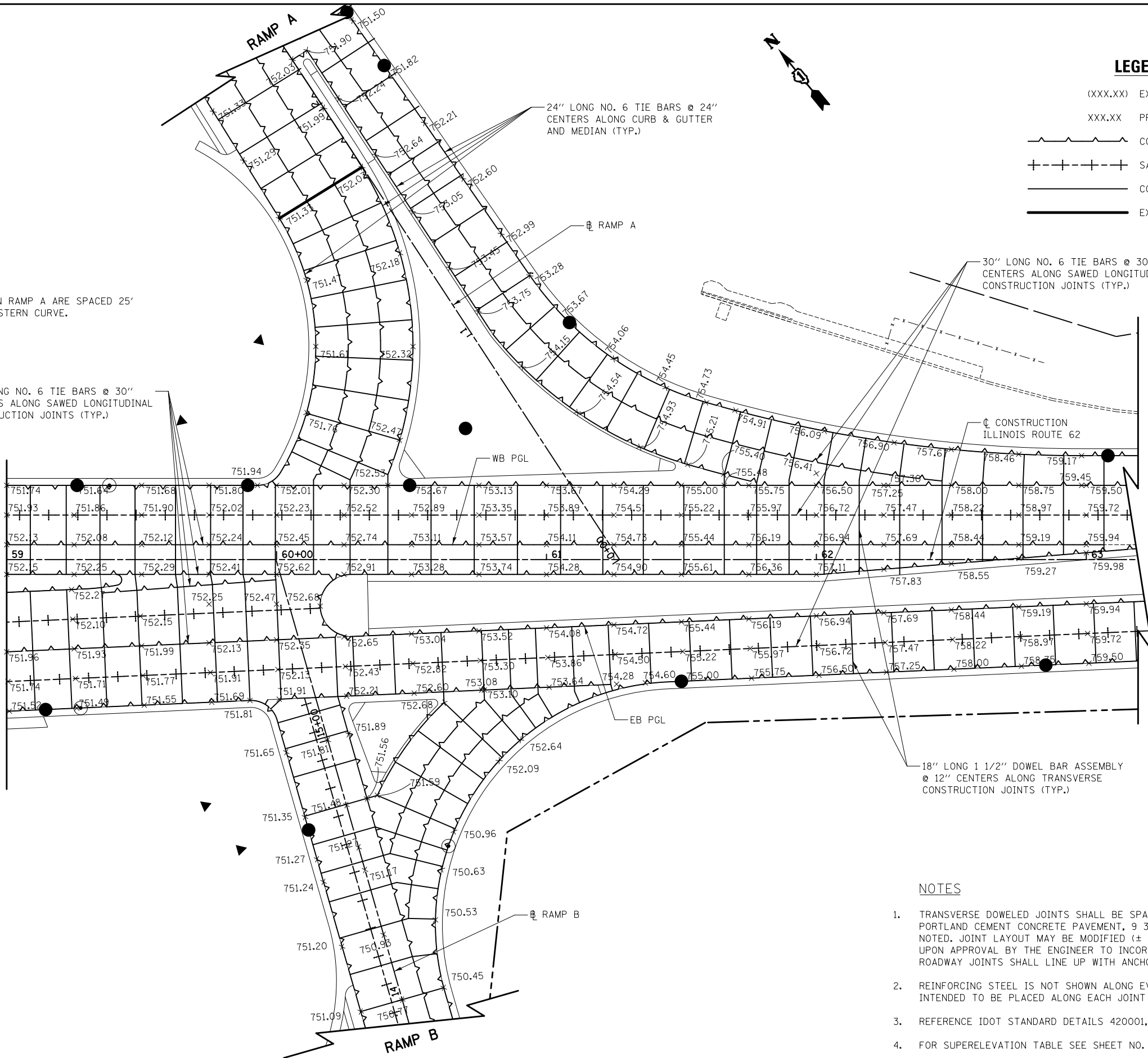
24" LONG NO. 6 TIE BARS @ 24" CENTERS ALONG CURB & GUTTER AND MEDIAN (TYP.)

30" LONG NO. 6 TIE BARS @ 30" CENTERS ALONG SAWED LONGITUDINAL CONSTRUCTION JOINTS (TYP.)

18" LONG 1 1/2" DOWEL BAR ASSEMBLY @ 12" CENTERS ALONG TRANSVERSE CONSTRUCTION JOINTS (TYP.)

ILLINOIS ROUTE 62
MATCH LINE STA. 59+00
SEE SHEET NO. 334

ILLINOIS ROUTE 62



NOTES

1. TRANSVERSE DOWELED JOINTS SHALL BE SPACED AT 15' O.C. (TYP.) IN THE PORTLAND CEMENT CONCRETE PAVEMENT, 9 3/4" (JOINTED) UNLESS OTHERWISE NOTED. JOINT LAYOUT MAY BE MODIFIED (± 3' PER STANDARD 420101 & 420106) UPON APPROVAL BY THE ENGINEER TO INCORPORATE CHANGES DURING CONSTRUCTION. ROADWAY JOINTS SHALL LINE UP WITH ANCHORAGE SLAB JOINTS WHERE APPLICABLE.
2. REINFORCING STEEL IS NOT SHOWN ALONG EVERY JOINT ON THE PLAN, BUT IS INTENDED TO BE PLACED ALONG EACH JOINT AS NOTED.
3. REFERENCE IDOT STANDARD DETAILS 420001, 420101, 420106, 420111, AND 606001.
4. FOR SUPERELEVATION TABLE SEE SHEET NO. 344.



FILE NAME = ...\\D160F72-sht-gradring-07.dgn	USER NAME = akw	DESIGNED - GAB	REVISED -	STATE OF ILLINOIS DEPARTMENT OF TRANSPORTATION	JOINTING & GRADING PLAN			O.R. RTE.	SECTION	COUNTY	TOTAL SHEETS	SHEET NO.	
		DRAWN - CTB	REVISED -		SCALE: 1" = 20'	SHEET NO. 7 OF 16 SHEETS	STA.	TO STA.	0003	18A-2	MCHENRY	825	335
		PLOT SCALE = 40.0000' / in.	CHECKED - GAB		REVISED -				CONTRACT NO. 60F72				
		PLOT DATE = 5/2/2012	DATE - 5/3/2012		REVISED -								FED. ROAD DIST. NO. 1 ILLINOIS FED. AID PROJECT