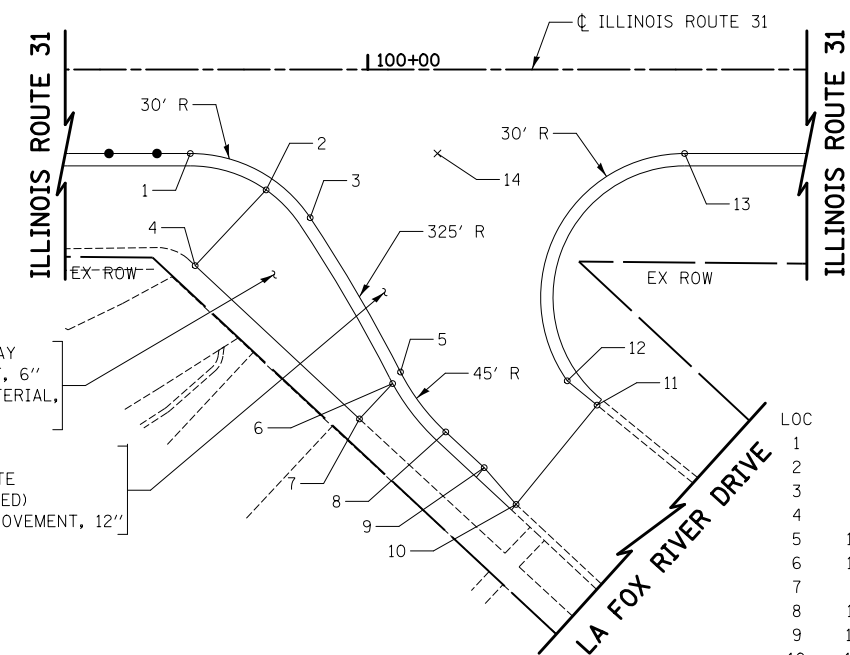


| LOC | STATION | OFFSET | ELEVATION |
|-----|----------|-----------|-----------|
| 1 | 97+36.44 | 18.76' RT | 753.23 |
| 2 | 97+56.48 | 42.73' RT | (749.15) |
| 3 | 97+58.98 | 42.77' RT | (749.10) |
| 4 | 97+74.46 | 42.97' RT | 749.40 |
| 5 | 97+74.46 | 18.16' RT | 753.15 |
| 6 | 97+89.82 | 43.18' RT | 749.10 |
| 7 | 97+92.53 | 42.96' RT | 749.19 |
| 8 | 97+97.57 | 43.55' RT | 748.70 |
| 9 | 97+99.42 | 38.30' RT | 749.64 |
| 10 | 97+94.88 | 36.54' RT | 750.90 |
| 11 | 97+92.97 | 34.20' RT | 750.83 |
| 12 | 98+16.55 | 17.50' RT | 752.99 |

ILLINOIS ROUTE 31
JAYNE STREET

SCALE IN FEET



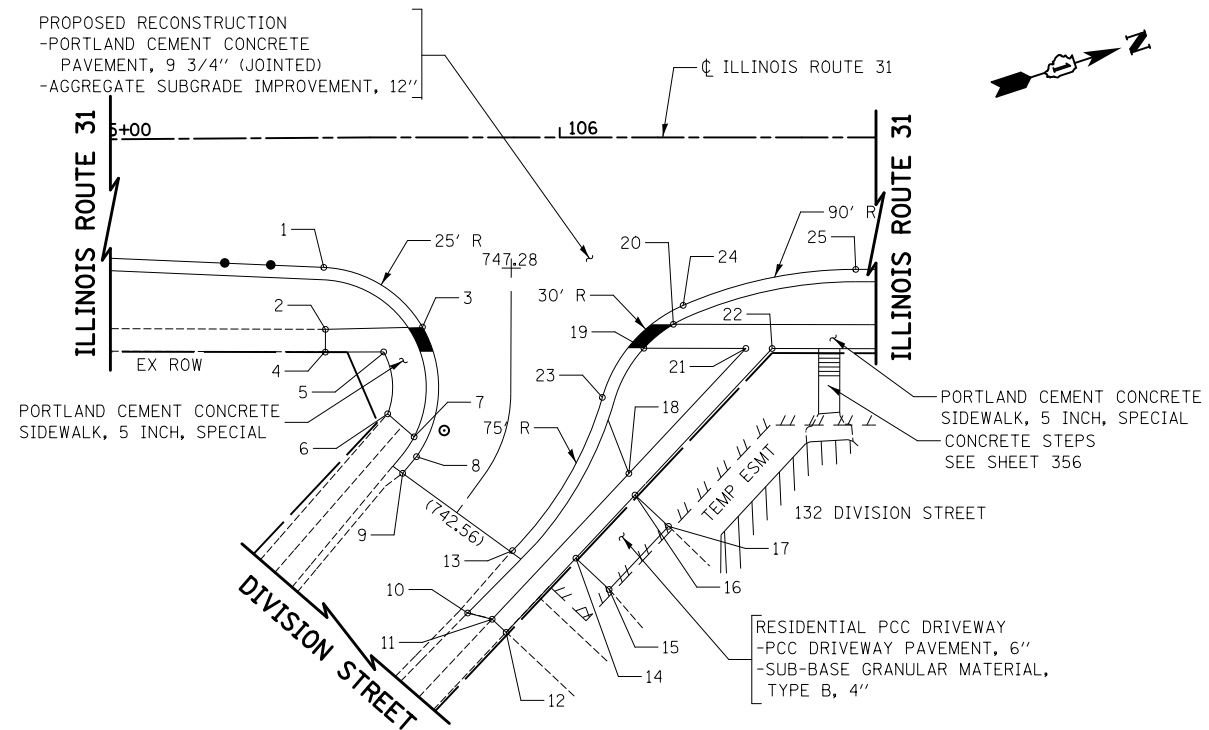
RESIDENTIAL PCC DRIVEWAY
-PCC DRIVEWAY PAVEMENT, 6"
-SUB-BASE GRANULAR MATERIAL,
TYPE B, 4"

PROPOSED RECONSTRUCTION
-PORTLAND CEMENT CONCRETE
PAVEMENT, 9 3/4" (JOINTED)
-AGGREGATE SUBGRADE IMPROVEMENT, 12"

| LOC | STATION | OFFSET | ELEVATION |
|-----|-----------|-----------|-----------|
| 1 | 99+63.01 | 17.50' RT | 752.34 |
| 2 | 99+78.80 | 25.09' RT | 751.39 |
| 3 | 99+87.99 | 30.89' RT | 750.00 |
| 4 | 99+64.02 | 40.87' RT | 747.69 |
| 5 | 100+06.51 | 63.04' RT | 745.86 |
| 6 | 100+05.17 | 65.45' RT | 745.93 |
| 7 | 99+98.26 | 72.82' RT | 746.09 |
| 8 | 100+16.25 | 75.52' RT | 744.23 |
| 9 | 100+24.25 | 82.97' RT | 743.62 |
| 10 | 100+30.90 | 90.63' RT | (743.01) |
| 11 | 100+47.77 | 69.94' RT | (744.00) |
| 12 | 100+41.56 | 64.88' RT | 744.89 |
| 13 | 100+66.02 | 17.50' RT | 751.89 |
| 14 | 100+14.51 | 17.50' RT | 752.12 |

ILLINOIS ROUTE 31
LA FOX RIVER DRIVE

SCALE IN FEET



LEGEND

(XXX.XX) EXISTING PAVEMENT ELEVATION
XXX.XX PROPOSED PAVEMENT ELEVATION

IN THE RESURFACING AREA, ALL EXISTING
ELEVATIONS WILL ALSO BE THE FINAL
PROPOSED SURFACE ELEVATION.

| LOC | STATION | OFFSET | ELEVATION |
|-----|-----------|------------|-----------|
| 1 | 105+60.54 | 27.01' RT | 747.31 |
| 2 | 105+50.89 | 39.93' RT | (744.39) |
| 3 | 105+71.53 | 39.46' RT | 745.10 |
| 4 | 105+50.84 | 44.67' RT | (744.20) |
| 5 | 105+63.31 | 44.70' RT | 744.71 |
| 6 | 105+64.15 | 57.61' RT | (743.20) |
| 7 | 105+69.66 | 62.40' RT | 743.55 |
| 8 | 105+70.16 | 66.53' RT | 743.05 |
| 9 | 105+67.27 | 70.00' RT | (742.45) |
| 10 | 105+80.82 | 99.12' RT | (741.80) |
| 11 | 105+85.92 | 100.42' RT | (741.71) |
| 12 | 105+88.84 | 103.16' RT | (741.35) |
| 13 | 105+90.16 | 86.11' RT | (741.92) |
| 14 | 106+03.37 | 87.69' RT | 742.38 |
| 15 | 106+10.30 | 94.20' RT | (741.78) |
| 16 | 106+15.69 | 74.53' RT | 742.85 |
| 17 | 106+22.67 | 81.06' RT | (742.08) |
| 18 | 106+14.41 | 70.03' RT | 742.99 |
| 19 | 106+17.54 | 43.93' RT | 745.84 |
| 20 | 106+23.68 | 38.94' RT | 746.67 |
| 21 | 106+38.80 | 43.98' RT | 743.88 |
| 22 | 106+44.26 | 43.98' RT | 744.50 |
| 23 | 106+08.89 | 54.18' RT | 744.83 |
| 24 | 106+25.72 | 35.00' RT | 746.78 |
| 25 | 106+61.70 | 27.50' RT | 747.64 |

ILLINOIS ROUTE 31
DIVISION STREET

SCALE IN FEET

| | | | |
|--|-----------------------------|-----------------|-----------|
| FILE NAME = | USER NAME = okw | DESIGNED - CTB | REVISED - |
| ... \D160F72-sht-details-02-intersection.dgn | | DRAWN - CTB | REVISED - |
| | PLOT SCALE = 40.0000' / in. | CHECKED - GAB | REVISED - |
| | PLOT DATE = 5/2/2012 | DATE - 5/3/2012 | REVISED - |

STATE OF ILLINOIS
DEPARTMENT OF TRANSPORTATION

INTERSECTION DETAILS

SCALE: 1" = 20' SHEET NO. 2 OF 9 SHEETS STA. TO STA.

| O.R. RTE. | SECTION | COUNTY | TOTAL SHEETS | SHEET NO. |
|---|---------|---------|--------------|-----------|
| 0003 | 18A-2 | MCHENRY | 825 | 346 |
| CONTRACT NO. 60F72 | | | | |
| FED. ROAD DIST. NO. 1 ILLINOIS FED. AID PROJECT | | | | |